

A1000-S3-V240 Reciprocating Medical Air System

System is NFPA compliant and has modular construction and interconnecting piping.

PUMP MODULE

The belt driven oil-less piston compressor delivers pressures up to 115 psi. Each module includes the compressor; motor; drive belts with belt guard; inlet filter; isolation valve; aftercooler; temperature switch for each cylinder, unloader solenoid, and relief valve.

AIR TREATMENT MODULE

The system's air treatment module features dual desiccant dryers configured for energy savings. They purge only when needed per the dew point setting. The dew point and CO transducers are integrated with the electrical panel. The module also contains prefilters, after filters, and activated carbon filters. Final line pressure regulators with gauges and relief valves are also part of the air treatment module.

AIR RECEIVER

The receiver is constructed to ASME standards and is galvanized for corrosion resistance. A source isolation valve and 3 valve bypasses are provided with the receiver module. A pressure gauge and relief valve are included, along with a sight window and electric auto drain. Mounting pads and flexible connectors are provided.

CONTROL PANEL

The UL listed electrical control panel features a high-definition color touch screen that can be set up externally without the use of toggle switches. The panel displays multiple conditions, including compressor running status, elapsed hours, pressure level, and audio/visual alarms.

Standard features include lag alarm, automatic compressor alternation, adjustable minimum run timer, adjustable pressure settings, adjustable screen brightness, alarm history registry, and data logging. The panel has standard dry contacts and Modbus interface with building management systems. Ethernet and BACnet are available as options. The panel's maintenance menu includes service items and maintenance warnings, and it is programmed for both English and Spanish languages.

Configuration	Triplex Stack Mount
System Capacity*	76.0 SCFM @ 50 psi 60 Hz. 63.3 SCFM @ 50 psi 50 Hz.
Horsepower (Each Pump)	10 HP
Horsepower (Total System)	30 HP
Available Voltage	208/230/460 v. 3 phase 60 Hz. 380 v. 3 phase 50 Hz. Contact Factory for other voltages
Full Load Amps 3 ph.	208 volts: 100.8 230 volts: 91.6 380 volts: 52.7 460 volts: 46.0
Tank Size	240 gallon vertical
Key Options	Bacterial filters for dryer/filter skid. Can be configured for lab use without lag alarm. Expandable for additional compressors.

Click here for compressor specifications and industry-leading parts support.



*System capacity is stated with one pump in reserve per NFPA. Capacity based on operation at sea level. For higher altitude, contact factory for adjusted capacity.

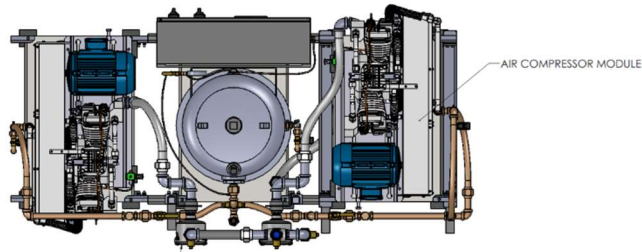
SYSTEM MODEL NO.	PART NO.	HP EACH	SCFM @ 80 PSIG EACH	SCFM @ 100 PSIG EACH	RECEIVER CAPACITY (GALLONS)	PUMP DISCHARGE (NPT)	ESTIMATED SYSTEM WEIGHT (LB.)
A1000-373-DD	ADM1000(C)-440-53-V120-DD	10	39	33.5	74	120	2100

SPACE ALLOWANCE FOR MAINTENANCE = 3 FT. ON ALL SIDES. MORE SPACE IS REQUIRED FOR THE OPENING OF LARGER PANEL DOORS.

TABLE 1

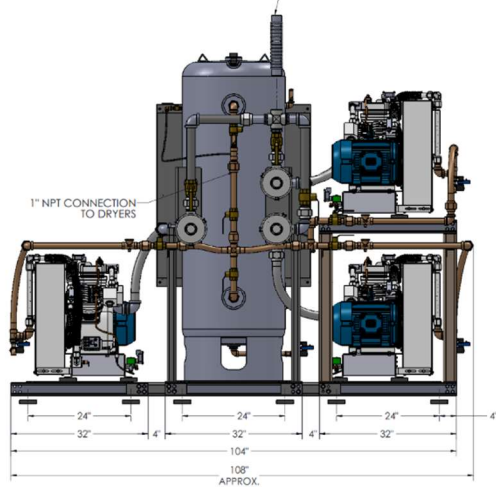
SYSTEM LISTED ARE 480V. IF ANOTHER VOLTAGE IS REQUIRED, USE THE FOLLOWING PART NUMBERS.

VOLTAGE	SYSTEM P/N	PUMP MODULE P/N	TRIP MODULE P/N
208-480-3	ADM1000(C)-208-53-V120-DD	100-0223	21-4339
230-480-3	ADM1000(C)-230-53-V120-DD	100-0223	21-4339
380-50-3	ADM1000(C)-380-53-V120-DD	100-0223	21-4344

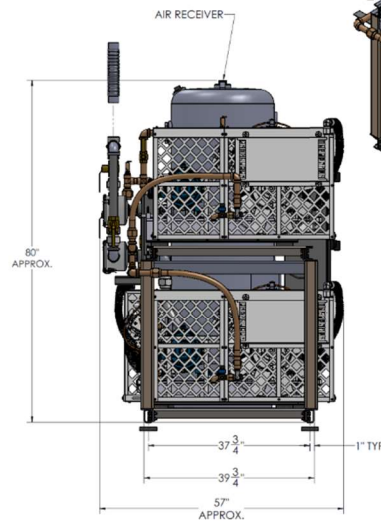


AIR INTAKE FILTERS

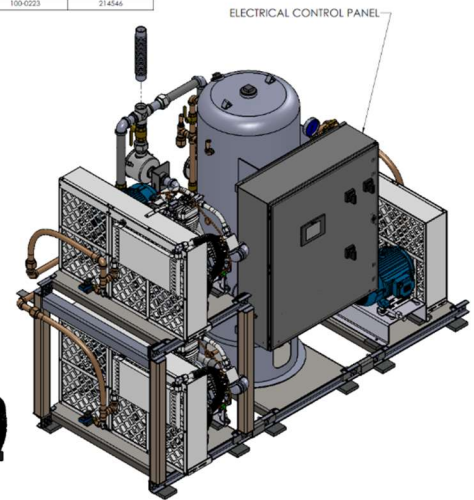
2" NPT AIR INLET CONNECTION



1" NPT CONNECTION TO DRYERS

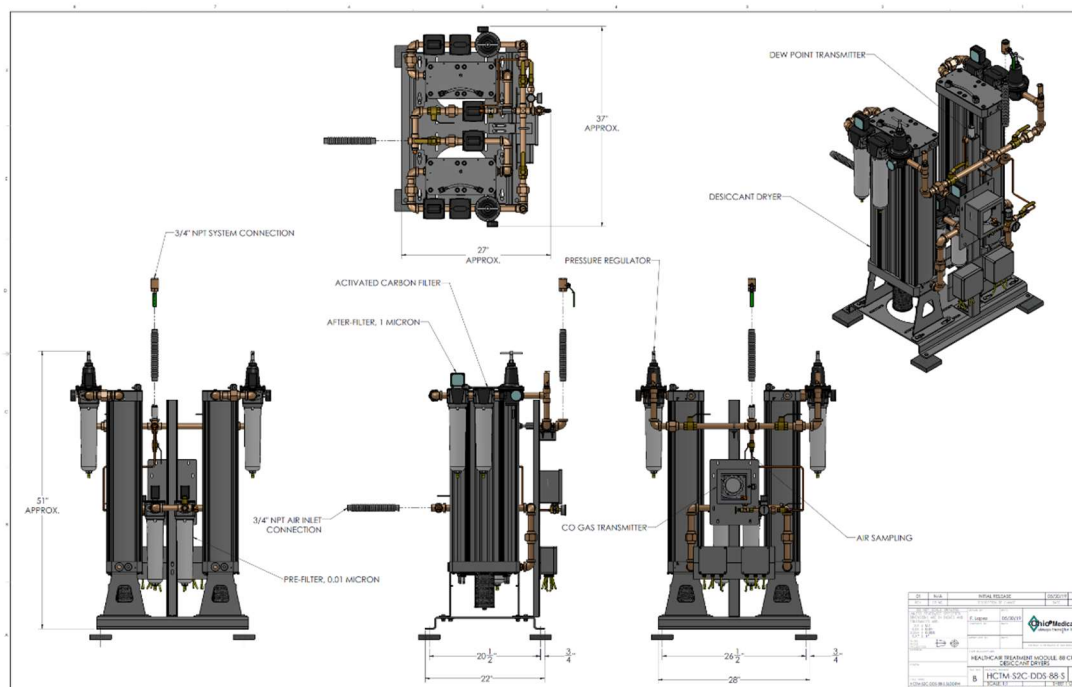


AIR RECEIVER



ELECTRICAL CONTROL PANEL

REV	DATE	DESCRIPTION	BY	CHKD
1	04/29/20	INITIAL RELEASE		
2	04/29/20	REVISION		
3	04/29/20	REVISION		
4	04/29/20	REVISION		
5	04/29/20	REVISION		
6	04/29/20	REVISION		
7	04/29/20	REVISION		
8	04/29/20	REVISION		
9	04/29/20	REVISION		
10	04/29/20	REVISION		
11	04/29/20	REVISION		
12	04/29/20	REVISION		
13	04/29/20	REVISION		
14	04/29/20	REVISION		
15	04/29/20	REVISION		
16	04/29/20	REVISION		
17	04/29/20	REVISION		
18	04/29/20	REVISION		
19	04/29/20	REVISION		
20	04/29/20	REVISION		
21	04/29/20	REVISION		
22	04/29/20	REVISION		
23	04/29/20	REVISION		
24	04/29/20	REVISION		
25	04/29/20	REVISION		
26	04/29/20	REVISION		
27	04/29/20	REVISION		
28	04/29/20	REVISION		
29	04/29/20	REVISION		
30	04/29/20	REVISION		
31	04/29/20	REVISION		
32	04/29/20	REVISION		
33	04/29/20	REVISION		
34	04/29/20	REVISION		
35	04/29/20	REVISION		
36	04/29/20	REVISION		
37	04/29/20	REVISION		
38	04/29/20	REVISION		
39	04/29/20	REVISION		
40	04/29/20	REVISION		
41	04/29/20	REVISION		
42	04/29/20	REVISION		
43	04/29/20	REVISION		
44	04/29/20	REVISION		
45	04/29/20	REVISION		
46	04/29/20	REVISION		
47	04/29/20	REVISION		
48	04/29/20	REVISION		
49	04/29/20	REVISION		
50	04/29/20	REVISION		
51	04/29/20	REVISION		
52	04/29/20	REVISION		
53	04/29/20	REVISION		
54	04/29/20	REVISION		
55	04/29/20	REVISION		
56	04/29/20	REVISION		
57	04/29/20	REVISION		
58	04/29/20	REVISION		
59	04/29/20	REVISION		
60	04/29/20	REVISION		
61	04/29/20	REVISION		
62	04/29/20	REVISION		
63	04/29/20	REVISION		
64	04/29/20	REVISION		
65	04/29/20	REVISION		
66	04/29/20	REVISION		
67	04/29/20	REVISION		
68	04/29/20	REVISION		
69	04/29/20	REVISION		
70	04/29/20	REVISION		
71	04/29/20	REVISION		
72	04/29/20	REVISION		
73	04/29/20	REVISION		
74	04/29/20	REVISION		
75	04/29/20	REVISION		
76	04/29/20	REVISION		
77	04/29/20	REVISION		
78	04/29/20	REVISION		
79	04/29/20	REVISION		
80	04/29/20	REVISION		
81	04/29/20	REVISION		
82	04/29/20	REVISION		
83	04/29/20	REVISION		
84	04/29/20	REVISION		
85	04/29/20	REVISION		
86	04/29/20	REVISION		
87	04/29/20	REVISION		
88	04/29/20	REVISION		
89	04/29/20	REVISION		
90	04/29/20	REVISION		
91	04/29/20	REVISION		
92	04/29/20	REVISION		
93	04/29/20	REVISION		
94	04/29/20	REVISION		
95	04/29/20	REVISION		
96	04/29/20	REVISION		
97	04/29/20	REVISION		
98	04/29/20	REVISION		
99	04/29/20	REVISION		
100	04/29/20	REVISION		



REV	DATE	DESCRIPTION	BY	CHKD
1	04/29/20	INITIAL RELEASE		
2	04/29/20	REVISION		
3	04/29/20	REVISION		
4	04/29/20	REVISION		
5	04/29/20	REVISION		
6	04/29/20	REVISION		
7	04/29/20	REVISION		
8	04/29/20	REVISION		
9	04/29/20	REVISION		
10	04/29/20	REVISION		
11	04/29/20	REVISION		
12	04/29/20	REVISION		
13	04/29/20	REVISION		
14	04/29/20	REVISION		
15	04/29/20	REVISION		
16	04/29/20	REVISION		
17	04/29/20	REVISION		
18	04/29/20	REVISION		
19	04/29/20	REVISION		
20	04/29/20	REVISION		
21	04/29/20	REVISION		
22	04/29/20	REVISION		
23	04/29/20	REVISION		
24	04/29/20	REVISION		
25	04/29/20	REVISION		
26	04/29/20	REVISION		
27	04/29/20	REVISION		
28	04/29/20	REVISION		
29	04/29/20	REVISION		
30	04/29/20	REVISION		
31	04/29/20	REVISION		
32	04/29/20	REVISION		
33	04/29/20	REVISION		
34	04/29/20	REVISION		
35	04/29/20	REVISION		
36	04/29/20	REVISION		
37	04/29/20	REVISION		
38	04/29/20	REVISION		
39	04/29/20	REVISION		
40	04/29/20	REVISION		
41	04/29/20	REVISION		
42	04/29/20	REVISION		
43	04/29/20	REVISION		
44	04/29/20	REVISION		
45	04/29/20	REVISION		
46	04/29/20	REVISION		
47	04/29/20	REVISION		
48	04/29/20	REVISION		
49	04/29/20	REVISION		
50	04/29/20	REVISION		
51	04/29/20	REVISION		
52	04/29/20	REVISION		
53	04/29/20	REVISION		
54	04/29/20	REVISION		
55	04/29/20	REVISION		
56	04/29/20	REVISION		
57	04/29/20	REVISION		
58	04/29/20	REVISION		
59	04/29/20	REVISION		
60	04/29/20	REVISION		
61	04/29/20	REVISION		
62	04/29/20	REVISION		
63	04/29/20	REVISION		
64	04/29/20	REVISION		
65	04/29/20	REVISION		
66	04/29/20	REVISION		
67	04/29/20	REVISION		
68	04/29/20	REVISION		
69	04/29/20	REVISION		
70	04/29/20	REVISION		
71	04/29/20	REVISION		
72	04/29/20	REVISION		
73	04/29/20	REVISION		
74	04/29/20	REVISION		
75	04/29/20	REVISION		
76	04/29/20	REVISION		
77	04/29/20	REVISION		
78	04/29/20	REVISION		
79	04/29/20	REVISION		
80	04/29/20	REVISION		
81	04/29/20	REVISION		
82	04/29/20	REVISION		
83	04/29/20	REVISION		
84	04/29/20	REVISION		
85	04/29/20	REVISION		
86	04/29/20	REVISION		
87	04/29/20	REVISION		
88	04/29/20	REVISION		
89	04/29/20	REVISION		
90	04/29/20	REVISION		
91	04/29/20	REVISION		
92	04/29/20	REVISION		
93	04/29/20	REVISION		
94	04/29/20	REVISION		
95	04/29/20	REVISION		
96	04/29/20	REVISION		
97	04/29/20	REVISION		
98	04/29/20	REVISION		
99	04/29/20	REVISION		
100	04/29/20	REVISION		