

A2500-S3-V240 Reciprocating Medical Air System

System is NFPA compliant and has modular construction and interconnecting piping.

PUMP MODULE

The belt driven oil-less piston compressor delivers pressures up to 115 psi. Each module includes the compressor; motor; drive belts with belt guard; inlet filter; isolation valve; aftercooler; temperature switch for each cylinder, unloader solenoid, and relief valve.

AIR TREATMENT MODULE

The system's air treatment module features dual desiccant dryers configured for energy savings. They purge only when needed per the dew point setting. The dew point and CO transducers are integrated with the electrical panel. The module also contains prefilters, after filters, and activated carbon filters. Final line pressure regulators with gauges and relief valves are also part of the air treatment module.

AIR RECEIVER

The receiver is constructed to ASME standards and is galvanized for corrosion resistance. A source isolation valve and 3 valve bypasses are provided with the receiver module. A pressure gauge and relief valve are included, along with a sight window and electric auto drain. Mounting pads and flexible connectors are provided.

CONTROL PANEL

The UL listed electrical control panel features a high-definition color touch screen that can be set up externally without the use of toggle switches. The panel displays multiple conditions, including compressor running status, elapsed hours, pressure level, and audio/visual alarms.

Standard features include lag alarm, automatic compressor alternation, adjustable minimum run timer, adjustable pressure settings, adjustable screen brightness, alarm history registry, and data logging. The panel has standard dry contacts and Modbus interface with building management systems. Ethernet and BACnet are available as options. The panel's maintenance menu includes service items and maintenance warnings, and it is programmed for both English and Spanish languages.

Configuration	Triplex Stack Mount
System Capacity*	184 SCFM @ 50 psi 60 Hz. 153.3 SCFM @ 50 psi 50 Hz.
Horsepower (Each Pump)	25 HP
Horsepower (Total System)	75 HP
Available Voltage	208/230/460V 3 PH 60 Hz. 380V 3 PH 50 Hz. Contact Factory for other voltages
Full Load Amps 3 ph.	208 Volts: 232.8 230 Volts: 211.6 380 Volts: 124.7 460 Volts: 106
Tank Size	240 gallon vertical
Key Options	Bacterial filters for dryer/filter skid. Can be configured for lab use without lag alarm. Expandable for additional compressors.

Click here for compressor specifications and industry-leading parts support.

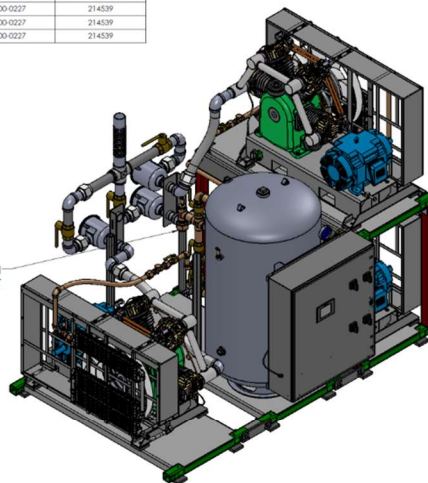
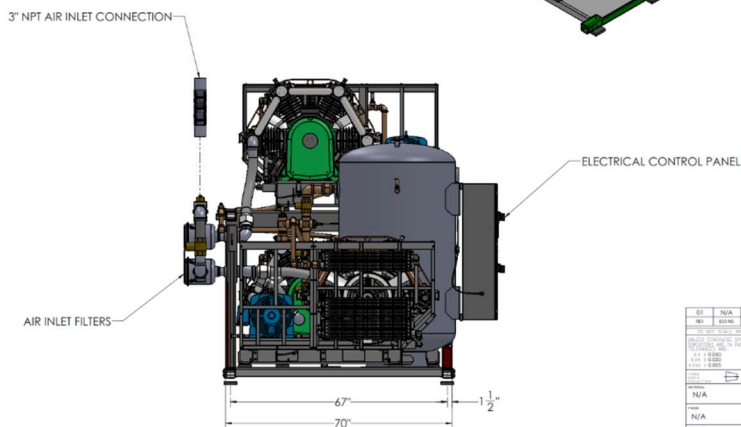
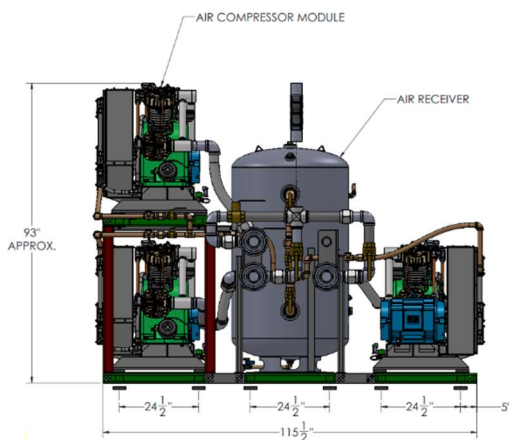
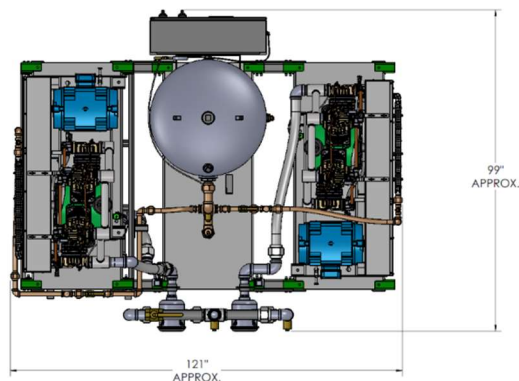


*System capacity is stated with one pump in reserve per NFPA. Capacity based on operation at sea level. For higher altitude, contact factory for adjusted capacity.

SYSTEM MODEL NO.	PART NO.	HP EACH	SCF/ATM P/W @ 90 PSIG EACH	SCF/ATM P/W @ 100 PSIG EACH	DESIGN CAPACITY (GALLONS)	RECEIVER SIZE (GALLONS)	PUMP DISCHARGE (NPT)	ESTIMATED SYSTEM WEIGHT (LBS.)
A3000B-53-DD	ACM3000-460-53-V240-DD	30	108	93	216	240	1"	6600

SPACE ALLOWANCE FOR MAINTENANCE = 3 FT ON ALL SIDES. MORE SPACE OPENING OF LARGER PANEL DOOR.

TABLE 1			
SYSTEM LISTED ARE 460V. IF ANOTHER VOLTAGE IS REQUIRED, USE THE FOLLOWING PART NUMBERS.			
VOLTAGE	SYSTEM P/N	PUMP MODULE P/N	TRP MODULE P/N
208-40-3	ACM3000-208-53-V240-DD	100-0227	214539
230-40-3	ACM3000-230-53-V240-DD	100-0227	214539
380-50-3	ACM3000-380-53-V240-DD	100-0227	214539



Q1	N/A	INITIAL RELEASE	12/12/19	F.L.
REV	REV NO.	DESCRIPTION OF CHANGE	DATE	BY
1	1	INITIAL RELEASE	12/12/19	J. LOPEZ
2	2	INITIAL RELEASE	12/12/19	J. LOPEZ
3	3	INITIAL RELEASE	12/12/19	J. LOPEZ
4	4	INITIAL RELEASE	12/12/19	J. LOPEZ
5	5	INITIAL RELEASE	12/12/19	J. LOPEZ
6	6	INITIAL RELEASE	12/12/19	J. LOPEZ
7	7	INITIAL RELEASE	12/12/19	J. LOPEZ
8	8	INITIAL RELEASE	12/12/19	J. LOPEZ
9	9	INITIAL RELEASE	12/12/19	J. LOPEZ
10	10	INITIAL RELEASE	12/12/19	J. LOPEZ
11	11	INITIAL RELEASE	12/12/19	J. LOPEZ
12	12	INITIAL RELEASE	12/12/19	J. LOPEZ
13	13	INITIAL RELEASE	12/12/19	J. LOPEZ
14	14	INITIAL RELEASE	12/12/19	J. LOPEZ
15	15	INITIAL RELEASE	12/12/19	J. LOPEZ
16	16	INITIAL RELEASE	12/12/19	J. LOPEZ
17	17	INITIAL RELEASE	12/12/19	J. LOPEZ
18	18	INITIAL RELEASE	12/12/19	J. LOPEZ
19	19	INITIAL RELEASE	12/12/19	J. LOPEZ
20	20	INITIAL RELEASE	12/12/19	J. LOPEZ
21	21	INITIAL RELEASE	12/12/19	J. LOPEZ
22	22	INITIAL RELEASE	12/12/19	J. LOPEZ
23	23	INITIAL RELEASE	12/12/19	J. LOPEZ
24	24	INITIAL RELEASE	12/12/19	J. LOPEZ
25	25	INITIAL RELEASE	12/12/19	J. LOPEZ
26	26	INITIAL RELEASE	12/12/19	J. LOPEZ
27	27	INITIAL RELEASE	12/12/19	J. LOPEZ
28	28	INITIAL RELEASE	12/12/19	J. LOPEZ
29	29	INITIAL RELEASE	12/12/19	J. LOPEZ
30	30	INITIAL RELEASE	12/12/19	J. LOPEZ
31	31	INITIAL RELEASE	12/12/19	J. LOPEZ
32	32	INITIAL RELEASE	12/12/19	J. LOPEZ
33	33	INITIAL RELEASE	12/12/19	J. LOPEZ
34	34	INITIAL RELEASE	12/12/19	J. LOPEZ
35	35	INITIAL RELEASE	12/12/19	J. LOPEZ
36	36	INITIAL RELEASE	12/12/19	J. LOPEZ
37	37	INITIAL RELEASE	12/12/19	J. LOPEZ
38	38	INITIAL RELEASE	12/12/19	J. LOPEZ
39	39	INITIAL RELEASE	12/12/19	J. LOPEZ
40	40	INITIAL RELEASE	12/12/19	J. LOPEZ
41	41	INITIAL RELEASE	12/12/19	J. LOPEZ
42	42	INITIAL RELEASE	12/12/19	J. LOPEZ
43	43	INITIAL RELEASE	12/12/19	J. LOPEZ
44	44	INITIAL RELEASE	12/12/19	J. LOPEZ
45	45	INITIAL RELEASE	12/12/19	J. LOPEZ
46	46	INITIAL RELEASE	12/12/19	J. LOPEZ
47	47	INITIAL RELEASE	12/12/19	J. LOPEZ
48	48	INITIAL RELEASE	12/12/19	J. LOPEZ
49	49	INITIAL RELEASE	12/12/19	J. LOPEZ
50	50	INITIAL RELEASE	12/12/19	J. LOPEZ
51	51	INITIAL RELEASE	12/12/19	J. LOPEZ
52	52	INITIAL RELEASE	12/12/19	J. LOPEZ
53	53	INITIAL RELEASE	12/12/19	J. LOPEZ
54	54	INITIAL RELEASE	12/12/19	J. LOPEZ
55	55	INITIAL RELEASE	12/12/19	J. LOPEZ
56	56	INITIAL RELEASE	12/12/19	J. LOPEZ
57	57	INITIAL RELEASE	12/12/19	J. LOPEZ
58	58	INITIAL RELEASE	12/12/19	J. LOPEZ
59	59	INITIAL RELEASE	12/12/19	J. LOPEZ
60	60	INITIAL RELEASE	12/12/19	J. LOPEZ
61	61	INITIAL RELEASE	12/12/19	J. LOPEZ
62	62	INITIAL RELEASE	12/12/19	J. LOPEZ
63	63	INITIAL RELEASE	12/12/19	J. LOPEZ
64	64	INITIAL RELEASE	12/12/19	J. LOPEZ
65	65	INITIAL RELEASE	12/12/19	J. LOPEZ
66	66	INITIAL RELEASE	12/12/19	J. LOPEZ
67	67	INITIAL RELEASE	12/12/19	J. LOPEZ
68	68	INITIAL RELEASE	12/12/19	J. LOPEZ
69	69	INITIAL RELEASE	12/12/19	J. LOPEZ
70	70	INITIAL RELEASE	12/12/19	J. LOPEZ
71	71	INITIAL RELEASE	12/12/19	J. LOPEZ
72	72	INITIAL RELEASE	12/12/19	J. LOPEZ
73	73	INITIAL RELEASE	12/12/19	J. LOPEZ
74	74	INITIAL RELEASE	12/12/19	J. LOPEZ
75	75	INITIAL RELEASE	12/12/19	J. LOPEZ
76	76	INITIAL RELEASE	12/12/19	J. LOPEZ
77	77	INITIAL RELEASE	12/12/19	J. LOPEZ
78	78	INITIAL RELEASE	12/12/19	J. LOPEZ
79	79	INITIAL RELEASE	12/12/19	J. LOPEZ
80	80	INITIAL RELEASE	12/12/19	J. LOPEZ
81	81	INITIAL RELEASE	12/12/19	J. LOPEZ
82	82	INITIAL RELEASE	12/12/19	J. LOPEZ
83	83	INITIAL RELEASE	12/12/19	J. LOPEZ
84	84	INITIAL RELEASE	12/12/19	J. LOPEZ
85	85	INITIAL RELEASE	12/12/19	J. LOPEZ
86	86	INITIAL RELEASE	12/12/19	J. LOPEZ
87	87	INITIAL RELEASE	12/12/19	J. LOPEZ
88	88	INITIAL RELEASE	12/12/19	J. LOPEZ
89	89	INITIAL RELEASE	12/12/19	J. LOPEZ
90	90	INITIAL RELEASE	12/12/19	J. LOPEZ
91	91	INITIAL RELEASE	12/12/19	J. LOPEZ
92	92	INITIAL RELEASE	12/12/19	J. LOPEZ
93	93	INITIAL RELEASE	12/12/19	J. LOPEZ
94	94	INITIAL RELEASE	12/12/19	J. LOPEZ
95	95	INITIAL RELEASE	12/12/19	J. LOPEZ
96	96	INITIAL RELEASE	12/12/19	J. LOPEZ
97	97	INITIAL RELEASE	12/12/19	J. LOPEZ
98	98	INITIAL RELEASE	12/12/19	J. LOPEZ
99	99	INITIAL RELEASE	12/12/19	J. LOPEZ
100	100	INITIAL RELEASE	12/12/19	J. LOPEZ

