

# A300-T2-H120 Reciprocating Medical Air System

System is NFPA compliant and has modular construction and interconnecting piping.

## PUMP MODULE

The belt driven oil-less piston compressor delivers pressures up to 115 psi. Each module includes the compressor; motor; drive belts with belt guard; inlet filter; isolation valve; aftercooler; temperature switch for each cylinder, unloader solenoid, and relief valve.

## AIR TREATMENT MODULE

The system's air treatment module features dual desiccant dryers configured for energy savings. They purge only when needed per the dew point setting. The dew point and CO transducers are integrated with the electrical panel. The module also contains prefilters, after filters, and activated carbon filters. Final line pressure regulators with gauges and relief valves are also part of the air treatment module.

## AIR RECEIVER

The receiver is constructed to ASME standards and is galvanized for corrosion resistance. A source isolation valve and 3 valve bypasses are provided with the receiver module. A pressure gauge and relief valve are included, along with a sight window and electric auto drain. Mounting pads and flexible connectors are provided.

## CONTROL PANEL

The UL listed electrical control panel features a high-definition color touch screen that can be set up externally without the use of toggle switches. The panel displays multiple conditions, including compressor running status, elapsed hours, pressure level, and audio/visual alarms.

Standard features include lag alarm, automatic compressor alternation, adjustable minimum run timer, adjustable pressure settings, adjustable screen brightness, alarm history registry, and data logging. The panel has standard dry contacts and Modbus interface with building management systems. Ethernet and BACnet are available as options. The panel's maintenance menu includes service items and maintenance warnings, and it is programmed for both English and Spanish languages.

<b>Configuration</b>	Duplex Tank Mount
<b>System Capacity*</b>	13.0 SCFM @ 50 psi 60 Hz. 10.8 SCFM @ 50 psi 50 Hz.
<b>Horsepower (Each Pump)</b>	3 HP
<b>Horsepower (Total System)</b>	6 HP
<b>Available Voltage</b>	208/230/460 v. 3 phase 60 Hz. 380 v. 3 phase 50 Hz. Contact Factory for other voltages
<b>Full Load Amps 3 ph.</b>	208 volts: 25.4 230 volts: 23.0 380 volts: 12.8 460 volts: 11.6
<b>Tank Size</b>	120 gallon horizontal
<b>Key Options</b>	Bacterial filters for dryer/filter skid. Can be configured for lab use without lag alarm. Expandable for additional compressors.

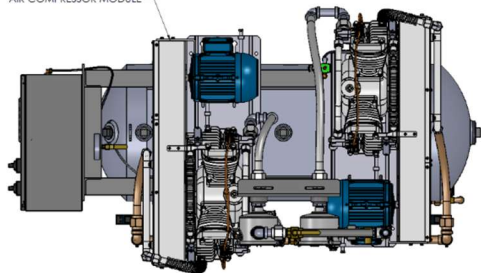
*Click here for compressor specifications and industry-leading parts support.*



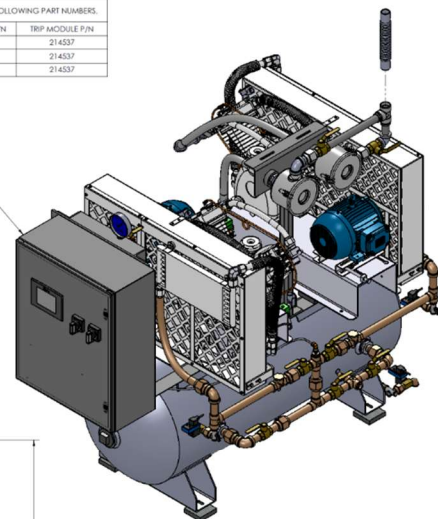
\*System capacity is stated with one pump in reserve per NFPA. Capacity based on operation at sea level. For higher altitude, contact factory for adjusted capacity.

SYSTEM LISTED ARE 460V. IF ANOTHER VOLTAGE IS REQUIRED, USE THE FOLLOWING PART NUMBERS.			
VOLTAGE	SYSTEM P/N	PUMP MODULE P/N	TRIP MODULE P/N
208-60-3	AOM300-208-T2-H120-DD	100-0220	21-4537
230-60-3	AOM300-230-T2-H120-DD	100-0220	21-4537
380-50-3	AOM300-380-T2-H120-DD	100-0220	21-4537

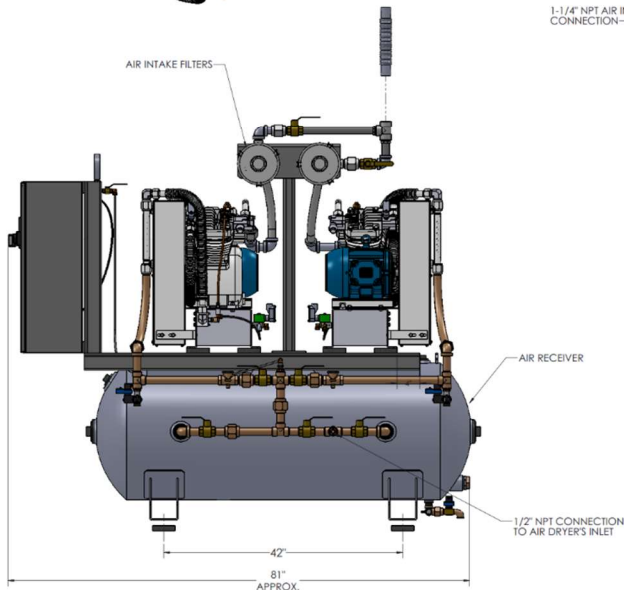
### AIR COMPRESSOR MODULE-



CONTROL PANEL



### AIR INTAKE FILTERS—



1-1/4" NPT AIR INLET  
CONNECTION

71"  
APPROX.

47" APPROX.

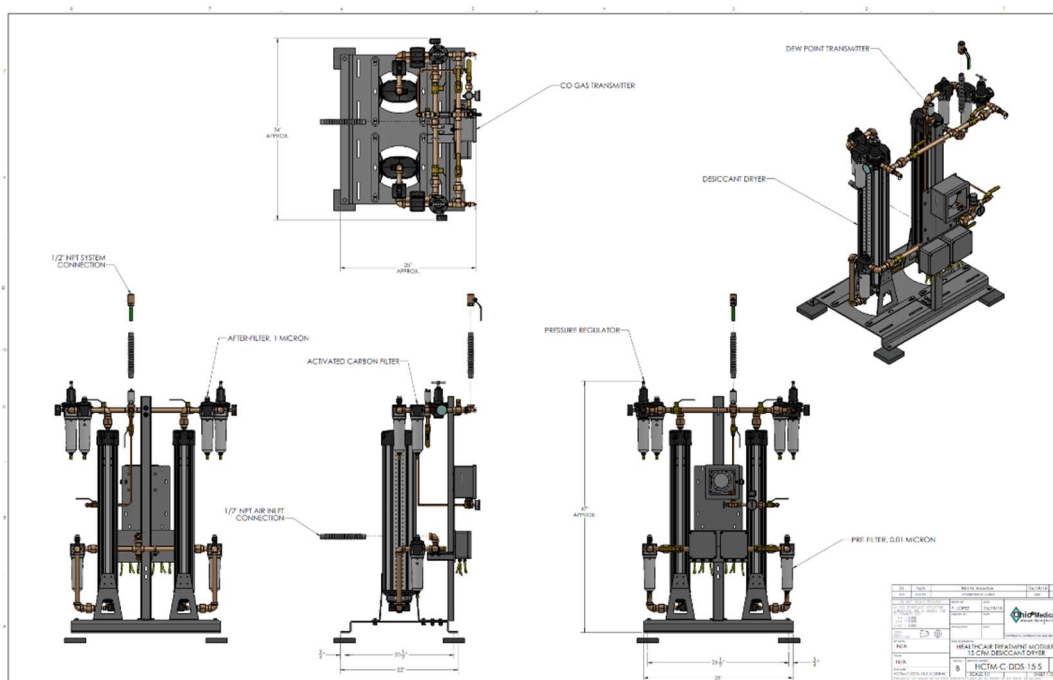
[illegible]

Figure 1 shows the HPA1000A, a 15 cm disinfectant dryer. The device is a rectangular box with a control panel on the left side featuring a digital display and several buttons. The main body of the device is white with a large circular opening on the right side. The device is shown against a plain background.