

## A3000-S3-V240 Reciprocating Medical Air System

System is NFPA compliant and has modular construction and interconnecting piping.

### PUMP MODULE

The belt driven oil-less piston compressor delivers pressures up to 115 psi. Each module includes the compressor; motor; drive belts with belt guard; inlet filter; isolation valve; aftercooler; temperature switch for each cylinder, unloader solenoid, and relief valve.

### AIR TREATMENT MODULE

The system's air treatment module features dual desiccant dryers configured for energy savings. They purge only when needed per the dew point setting. The dew point and CO transducers are integrated with the electrical panel. The module also contains prefilters, after filters, and activated carbon filters. Final line pressure regulators with gauges and relief valves are also part of the air treatment module.

### AIR RECEIVER

The receiver is constructed to ASME standards and is galvanized for corrosion resistance. A source isolation valve and 3 valve bypasses are provided with the receiver module. A pressure gauge and relief valve are included, along with a sight window and electric auto drain. Mounting pads and flexible connectors are provided.

### CONTROL PANEL

The UL listed electrical control panel features a high-definition color touch screen that can be set up externally without the use of toggle switches. The panel displays multiple conditions, including compressor running status, elapsed hours, pressure level, and audio/visual alarms.

Standard features include lag alarm, automatic compressor alternation, adjustable minimum run timer, adjustable pressure settings, adjustable screen brightness, alarm history registry, and data logging. The panel has standard dry contacts and Modbus interface with building management systems. Ethernet and BACnet are available as options. The panel's maintenance menu includes service items and maintenance warnings, and it is programmed for both English and Spanish languages.

<b>Configuration</b>	Triplex Stack Mount
<b>System Capacity*</b>	216 SCFM @ 50 psi 60 Hz. 180 SCFM @ 50 psi 50 Hz.
<b>Horsepower (Each Pump)</b>	30 HP
<b>Horsepower (Total System)</b>	90 HP
<b>Available Voltage</b>	208/230/460 v. 3 phase 60 Hz. 380 v. 3 phase 50 Hz. Contact Factory for other voltages
<b>Full Load Amps 3 ph.</b>	208 volts: 272.4 230 volts: 247.6 380 volts: 145.7 460 volts: 124
<b>Tank Size</b>	240 gallon vertical
<b>Key Options</b>	Bacterial filters for dryer/filter skid. Can be configured for lab use without lag alarm. Expandable for additional compressors.

*Click here for compressor specifications and industry-leading parts support.*

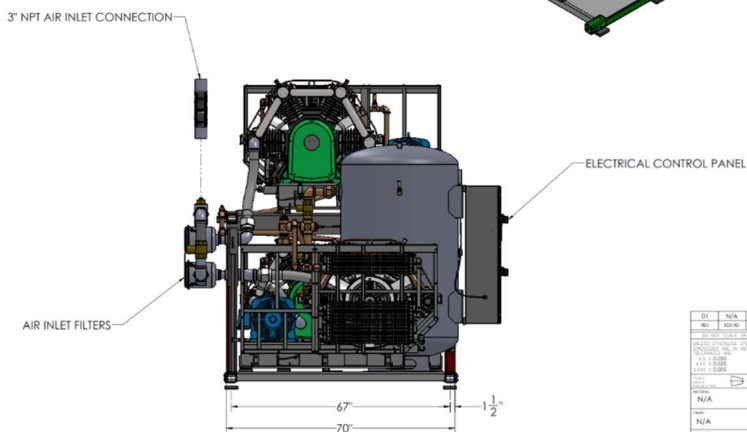
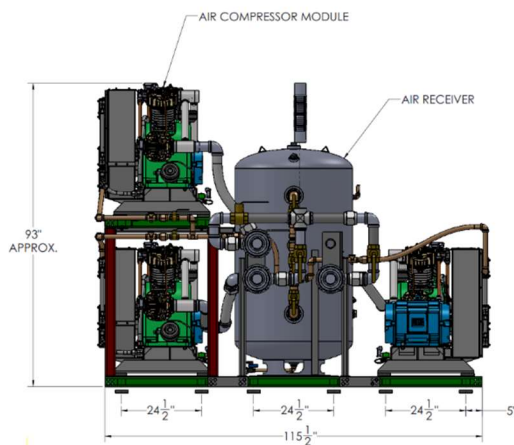
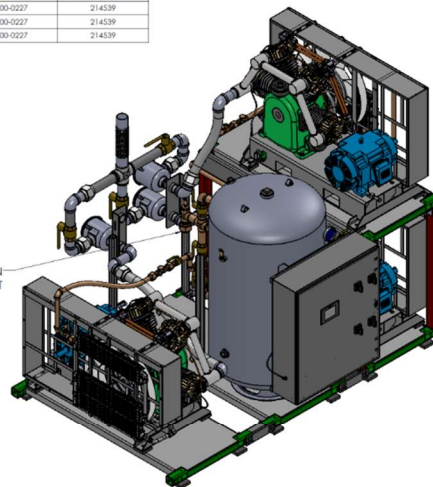
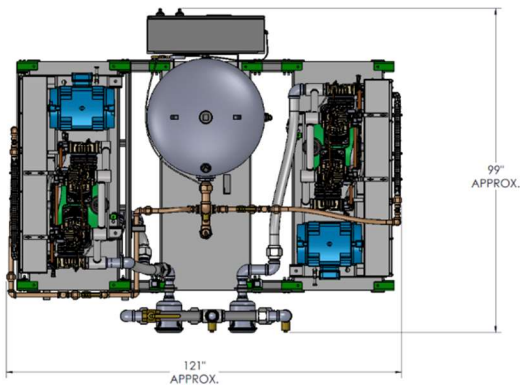


\*System capacity is stated with one pump in reserve per NFPA. Capacity based on operation at sea level. For higher altitude, contact factory for adjusted capacity.

SYSTEM MODEL NO.	PART NO.	HP EACH	SCFM/ACFM @ 30 PSI/2 EACH	SCFM/ACFM @ 100 PSI/2 EACH	DESIGN CAPACITY (LB. 30PSI/2 EACH)	RECEIVER SIZE (GALLONS)	PUMP DISCHARGE NPT	ESTIMATED SYSTEM WEIGHT (LBS.)
A3000B-573-DD	ACM3000-460-S3-V240-DD	30	108	93	216	240	1"	6600

SPACE ALLOWANCE FOR MAINTENANCE = 3 FT ON ALL SIDES. MORE SPACE OPENING OF LARGER PANEL DOOR.

TABLE 1			
SYSTEM LISTED ARE 480V. IF ANOTHER VOLTAGE IS REQUIRED, USE THE FOLLOWING PART NUMBERS.			
VOLTAGE	SYSTEM P/N	PUMP MODULE P/N	TRIP MODULE P/N
208-480-3	ACM3000-208-S3-V240-DD	100-0227	214539
230-480-3	ACM3000-230-S3-V240-DD	100-0227	214539
380-50-3	ACM3000-380-S3-V240-DD	100-0227	214539



01	N/A	INITIAL RELEASE	12/12/19	P.1
02	N/A	REWORK/REPAIR		
03	N/A	REWORK/REPAIR		
04	N/A	REWORK/REPAIR		
05	N/A	REWORK/REPAIR		
06	N/A	REWORK/REPAIR		
07	N/A	REWORK/REPAIR		
08	N/A	REWORK/REPAIR		
09	N/A	REWORK/REPAIR		
10	N/A	REWORK/REPAIR		
11	N/A	REWORK/REPAIR		
12	N/A	REWORK/REPAIR		
13	N/A	REWORK/REPAIR		
14	N/A	REWORK/REPAIR		
15	N/A	REWORK/REPAIR		
16	N/A	REWORK/REPAIR		
17	N/A	REWORK/REPAIR		
18	N/A	REWORK/REPAIR		
19	N/A	REWORK/REPAIR		
20	N/A	REWORK/REPAIR		
21	N/A	REWORK/REPAIR		
22	N/A	REWORK/REPAIR		
23	N/A	REWORK/REPAIR		
24	N/A	REWORK/REPAIR		
25	N/A	REWORK/REPAIR		
26	N/A	REWORK/REPAIR		
27	N/A	REWORK/REPAIR		
28	N/A	REWORK/REPAIR		
29	N/A	REWORK/REPAIR		
30	N/A	REWORK/REPAIR		
31	N/A	REWORK/REPAIR		
32	N/A	REWORK/REPAIR		
33	N/A	REWORK/REPAIR		
34	N/A	REWORK/REPAIR		
35	N/A	REWORK/REPAIR		
36	N/A	REWORK/REPAIR		
37	N/A	REWORK/REPAIR		
38	N/A	REWORK/REPAIR		
39	N/A	REWORK/REPAIR		
40	N/A	REWORK/REPAIR		
41	N/A	REWORK/REPAIR		
42	N/A	REWORK/REPAIR		
43	N/A	REWORK/REPAIR		
44	N/A	REWORK/REPAIR		
45	N/A	REWORK/REPAIR		
46	N/A	REWORK/REPAIR		
47	N/A	REWORK/REPAIR		
48	N/A	REWORK/REPAIR		
49	N/A	REWORK/REPAIR		
50	N/A	REWORK/REPAIR		
51	N/A	REWORK/REPAIR		
52	N/A	REWORK/REPAIR		
53	N/A	REWORK/REPAIR		
54	N/A	REWORK/REPAIR		
55	N/A	REWORK/REPAIR		
56	N/A	REWORK/REPAIR		
57	N/A	REWORK/REPAIR		
58	N/A	REWORK/REPAIR		
59	N/A	REWORK/REPAIR		
60	N/A	REWORK/REPAIR		
61	N/A	REWORK/REPAIR		
62	N/A	REWORK/REPAIR		
63	N/A	REWORK/REPAIR		
64	N/A	REWORK/REPAIR		
65	N/A	REWORK/REPAIR		
66	N/A	REWORK/REPAIR		
67	N/A	REWORK/REPAIR		
68	N/A	REWORK/REPAIR		
69	N/A	REWORK/REPAIR		
70	N/A	REWORK/REPAIR		
71	N/A	REWORK/REPAIR		
72	N/A	REWORK/REPAIR		
73	N/A	REWORK/REPAIR		
74	N/A	REWORK/REPAIR		
75	N/A	REWORK/REPAIR		
76	N/A	REWORK/REPAIR		
77	N/A	REWORK/REPAIR		
78	N/A	REWORK/REPAIR		
79	N/A	REWORK/REPAIR		
80	N/A	REWORK/REPAIR		
81	N/A	REWORK/REPAIR		
82	N/A	REWORK/REPAIR		
83	N/A	REWORK/REPAIR		
84	N/A	REWORK/REPAIR		
85	N/A	REWORK/REPAIR		
86	N/A	REWORK/REPAIR		
87	N/A	REWORK/REPAIR		
88	N/A	REWORK/REPAIR		
89	N/A	REWORK/REPAIR		
90	N/A	REWORK/REPAIR		
91	N/A	REWORK/REPAIR		
92	N/A	REWORK/REPAIR		
93	N/A	REWORK/REPAIR		
94	N/A	REWORK/REPAIR		
95	N/A	REWORK/REPAIR		
96	N/A	REWORK/REPAIR		
97	N/A	REWORK/REPAIR		
98	N/A	REWORK/REPAIR		
99	N/A	REWORK/REPAIR		
100	N/A	REWORK/REPAIR		

