

# A500-T2-H120 Reciprocating Medical Air System

System is NFPA compliant and has modular construction and interconnecting piping.

## PUMP MODULE

The belt driven oil-less piston compressor delivers pressures up to 115 psi. Each module includes the compressor; motor; drive belts with belt guard; inlet filter; isolation valve; aftercooler; temperature switch for each cylinder, unloader solenoid, and relief valve.

## AIR TREATMENT MODULE

The system's air treatment module features dual desiccant dryers configured for energy savings. They purge only when needed per the dew point setting. The dew point and CO transducers are integrated with the electrical panel. The module also contains prefilters, after filters, and activated carbon filters. Final line pressure regulators with gauges and relief valves are also part of the air treatment module.

## AIR RECEIVER

The receiver is constructed to ASME standards and is galvanized for corrosion resistance. A source isolation valve and 3 valve bypasses are provided with the receiver module. A pressure gauge and relief valve are included, along with a sight window and electric auto drain. Mounting pads and flexible connectors are provided.

## CONTROL PANEL

The UL listed electrical control panel features a high-definition color touch screen that can be set up externally without the use of toggle switches. The panel displays multiple conditions, including compressor running status, elapsed hours, pressure level, and audio/visual alarms.

Standard features include lag alarm, automatic compressor alternation, adjustable minimum run timer, adjustable pressure settings, adjustable screen brightness, alarm history registry, and data logging. The panel has standard dry contacts and Modbus interface with building management systems. Ethernet and BACnet are available as options. The panel's maintenance menu includes service items and maintenance warnings, and it is programmed for both English and Spanish languages.

<b>Configuration</b>	Duplex Tank Mount
<b>System Capacity*</b>	23.0 SCFM @ 50 psi 60 Hz. 19.2 SCFM @ 50 psi 50 Hz.
<b>Horsepower (Each Pump)</b>	5 HP
<b>Horsepower (Total System)</b>	10 HP
<b>Available Voltage</b>	208/230/460 v. 3 phase 60 Hz. 380 v. 3 phase 50 Hz. Contact Factory for other voltages
<b>Full Load Amps 3 ph.</b>	208 volts: 37.6 230 volts: 34.2 380 volts: 19.6 460 volts: 17.2
<b>Tank Size</b>	120 gallon horizontal
<b>Key Options</b>	Bacterial filters for dryer/filter skid. Can be configured for lab use without lag alarm. Expandable for additional compressors.

*Click here for compressor specifications and industry-leading parts support.*

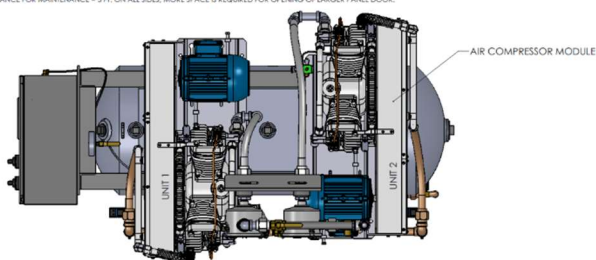


\*System capacity is stated with one pump in reserve per NFPA. Capacity based on operation at sea level. For higher altitude, contact factory for adjusted capacity.

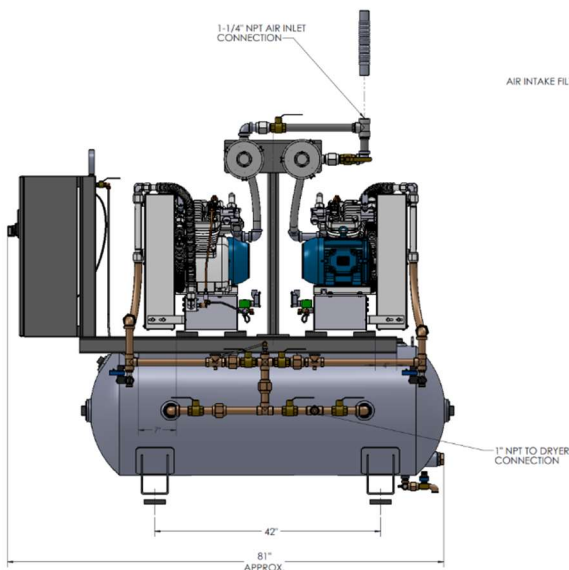
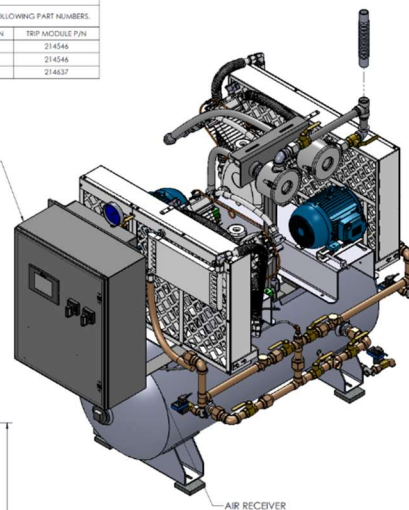
SYSTEM MODEL	PART NO.	HP EACH	SCHWABER	SCHWABER	DESIGN CAPACITY	RECEIVER SIZE	PUMP DISCHARGE	STANDARD SYSTEM
NO.			# 30 PSIG EACH	# 100 PSIG EACH	(GALLONS)		NPT	WEIGHT (LB)
AS008-T2-DD	ACM500-460-T2-H120-DD	5.0	23.0	19.5	23.0	120	1"	1350

SPACE ALLOWANCE FOR MAINTENANCE = 3 FT. ON ALL SIDES. MORE SPACE IS REQUIRED FOR OPENING OF LARGER PANEL DOOR.

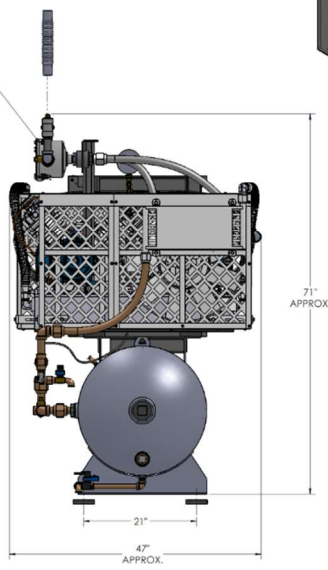
TABLE 1			
SYSTEM LISTED ARE 460V. IF ANOTHER VOLTAGE IS REQUIRED, USE THE FOLLOWING PART NUMBERS.			
VOLTAGE	SYSTEM P/N	PUMP MODULE P/N	TRIP MODULE P/N
208-460-3	ACM500-208-T2-H120-DD	100-0221	214546
230-460-3	ACM500-230-T2-H120-DD	100-0221	214546
380-460-3	ACM500-380-T2-H120-DD	100-0221	214637



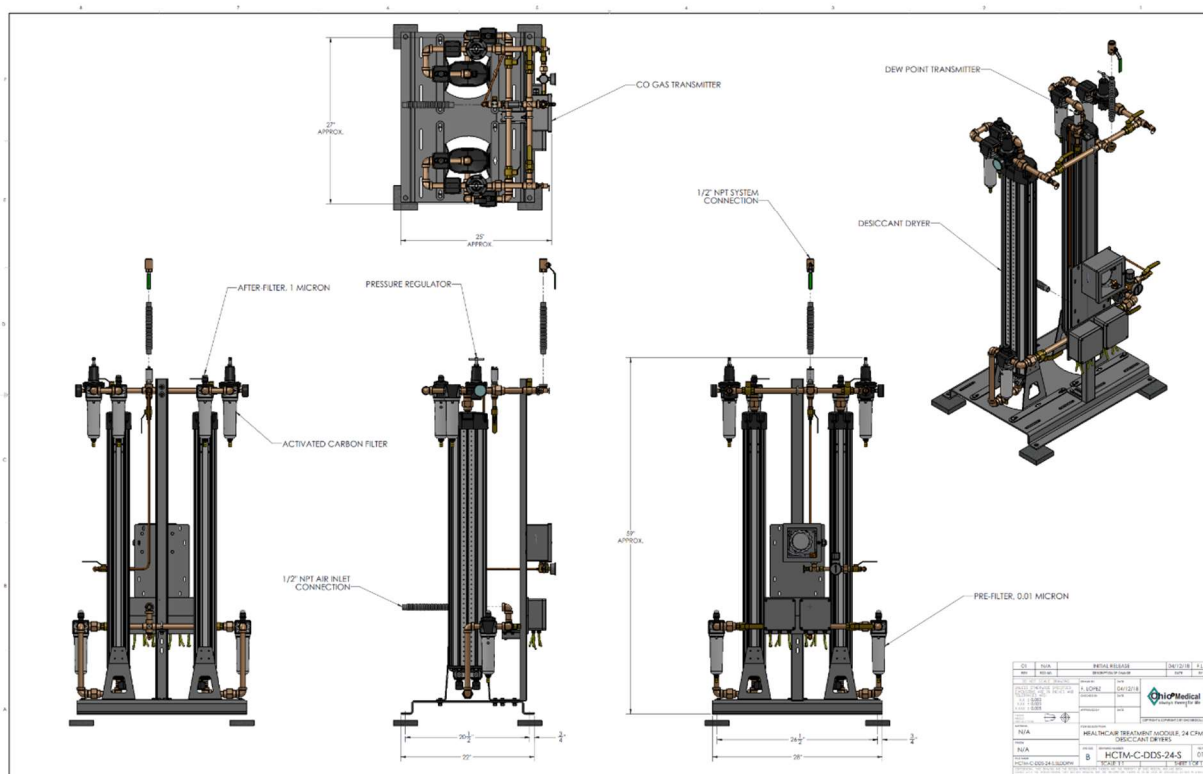
ELECTRICAL CONTROL PANEL



AIR INTAKE FILTERS



REV	DATE	INITIALS	DESCRIPTION
1	08/11/10		INITIAL RELEASE
2	08/11/10		REVISION
3	08/11/10		REVISION
4	08/11/10		REVISION
5	08/11/10		REVISION
6	08/11/10		REVISION
7	08/11/10		REVISION
8	08/11/10		REVISION
9	08/11/10		REVISION
10	08/11/10		REVISION
11	08/11/10		REVISION
12	08/11/10		REVISION
13	08/11/10		REVISION
14	08/11/10		REVISION
15	08/11/10		REVISION
16	08/11/10		REVISION
17	08/11/10		REVISION
18	08/11/10		REVISION
19	08/11/10		REVISION
20	08/11/10		REVISION
21	08/11/10		REVISION
22	08/11/10		REVISION
23	08/11/10		REVISION
24	08/11/10		REVISION
25	08/11/10		REVISION
26	08/11/10		REVISION
27	08/11/10		REVISION
28	08/11/10		REVISION
29	08/11/10		REVISION
30	08/11/10		REVISION
31	08/11/10		REVISION
32	08/11/10		REVISION
33	08/11/10		REVISION
34	08/11/10		REVISION
35	08/11/10		REVISION
36	08/11/10		REVISION
37	08/11/10		REVISION
38	08/11/10		REVISION
39	08/11/10		REVISION
40	08/11/10		REVISION
41	08/11/10		REVISION
42	08/11/10		REVISION
43	08/11/10		REVISION
44	08/11/10		REVISION
45	08/11/10		REVISION
46	08/11/10		REVISION
47	08/11/10		REVISION
48	08/11/10		REVISION
49	08/11/10		REVISION
50	08/11/10		REVISION
51	08/11/10		REVISION
52	08/11/10		REVISION
53	08/11/10		REVISION
54	08/11/10		REVISION
55	08/11/10		REVISION
56	08/11/10		REVISION
57	08/11/10		REVISION
58	08/11/10		REVISION
59	08/11/10		REVISION
60	08/11/10		REVISION
61	08/11/10		REVISION
62	08/11/10		REVISION
63	08/11/10		REVISION
64	08/11/10		REVISION
65	08/11/10		REVISION
66	08/11/10		REVISION
67	08/11/10		REVISION
68	08/11/10		REVISION
69	08/11/10		REVISION
70	08/11/10		REVISION
71	08/11/10		REVISION
72	08/11/10		REVISION
73	08/11/10		REVISION
74	08/11/10		REVISION
75	08/11/10		REVISION
76	08/11/10		REVISION
77	08/11/10		REVISION
78	08/11/10		REVISION
79	08/11/10		REVISION
80	08/11/10		REVISION
81	08/11/10		REVISION
82	08/11/10		REVISION
83	08/11/10		REVISION
84	08/11/10		REVISION
85	08/11/10		REVISION
86	08/11/10		REVISION
87	08/11/10		REVISION
88	08/11/10		REVISION
89	08/11/10		REVISION
90	08/11/10		REVISION
91	08/11/10		REVISION
92	08/11/10		REVISION
93	08/11/10		REVISION
94	08/11/10		REVISION
95	08/11/10		REVISION
96	08/11/10		REVISION
97	08/11/10		REVISION
98	08/11/10		REVISION
99	08/11/10		REVISION
100	08/11/10		REVISION



REV	DATE	INITIALS	DESCRIPTION
1	08/11/10		INITIAL RELEASE
2	08/11/10		REVISION
3	08/11/10		REVISION
4	08/11/10		REVISION
5	08/11/10		REVISION
6	08/11/10		REVISION
7	08/11/10		REVISION
8	08/11/10		REVISION
9	08/11/10		REVISION
10	08/11/10		REVISION
11	08/11/10		REVISION
12	08/11/10		REVISION
13	08/11/10		REVISION
14	08/11/10		REVISION
15	08/11/10		REVISION
16	08/11/10		REVISION
17	08/11/10		REVISION
18	08/11/10		REVISION
19	08/11/10		REVISION
20	08/11/10		REVISION
21	08/11/10		REVISION
22	08/11/10		REVISION
23	08/11/10		REVISION
24	08/11/10		REVISION
25	08/11/10		REVISION
26	08/11/10		REVISION
27	08/11/10		REVISION
28	08/11/10		REVISION
29	08/11/10		REVISION
30	08/11/10		REVISION
31	08/11/10		REVISION
32	08/11/10		REVISION
33	08/11/10		REVISION
34	08/11/10		REVISION
35	08/11/10		REVISION
36	08/11/10		REVISION
37	08/11/10		REVISION
38	08/11/10		REVISION
39	08/11/10		REVISION
40	08/11/10		REVISION
41	08/11/10		REVISION
42	08/11/10		REVISION
43	08/11/10		REVISION
44	08/11/10		REVISION
45	08/11/10		REVISION
46	08/11/10		REVISION
47	08/11/10		REVISION
48	08/11/10		REVISION
49	08/11/10		REVISION
50	08/11/10		REVISION
51	08/11/10		REVISION
52	08/11/10		REVISION
53	08/11/10		REVISION
54	08/11/10		REVISION
55	08/11/10		REVISION
56	08/11/10		REVISION
57	08/11/10		REVISION
58	08/11/10		REVISION
59	08/11/10		REVISION
60	08/11/10		REVISION
61	08/11/10		REVISION
62	08/11/10		REVISION
63	08/11/10		REVISION
64	08/11/10		REVISION
65	08/11/10		REVISION
66	08/11/10		REVISION
67	08/11/10		REVISION
68	08/11/10		REVISION
69	08/11/10		REVISION
70	08/11/10		REVISION
71	08/11/10		REVISION
72	08/11/10		REVISION
73	08/11/10		REVISION
74	08/11/10		REVISION
75	08/11/10		REVISION
76	08/11/10		REVISION
77	08/11/10		REVISION
78	08/11/10		REVISION
79	08/11/10		REVISION
80	08/11/10		REVISION
81	08/11/10		REVISION
82	08/11/10		REVISION
83	08/11/10		REVISION
84	08/11/10		REVISION
85	08/11/10		REVISION
86	08/11/10		REVISION
87	08/11/10		REVISION
88	08/11/10		REVISION
89	08/11/10		REVISION
90	08/11/10		REVISION
91	08/11/10		REVISION
92	08/11/10		REVISION
93	08/11/10		REVISION
94	08/11/10		REVISION
95	08/11/10		REVISION
96	08/11/10		REVISION
97	08/11/10		REVISION
98	08/11/10		REVISION
99	08/11/10		REVISION
100	08/11/10		REVISION