

AS1500-B3-V240-DD Scroll Air System

System is NFPA compliant and has modular construction and interconnecting piping.

PUMP MODULE

The belt driven oil-less scroll compressors deliver pressures up to 115 psi. Each scroll module includes two compressors driven by a common motor; drive belts with belt guard; inlet filter; isolation valve; aftercooler; temperature switch and relief valve.

AIR TREATMENT MODULE

The system's air treatment module features dual desiccant dryers configured for energy savings. They purge only when needed per the dew point setting. The dew point transducer and CO transducer are integrated with the electrical panel. The module also contains prefilters, after filters, and activated carbon filters. Final line pressure regulators with gauges and relief valves are also part of the air treatment module.

AIR RECEIVER

The receiver is constructed to ASME standards and is epoxy lined for corrosion resistance. A source isolation valve and 3 valve bypasses are provided with the receiver module. A pressure gauge and relief valve are included, along with a sight window and electric auto drain. Mounting pads and flexible connectors are provided.

CONTROL PANEL

The UL listed electrical control panel features a high-definition color touch screen that can be set up externally without the use of toggle switches. The panel displays multiple conditions, including compressor running status, elapsed hours, pressure level, and audio/visual alarms.

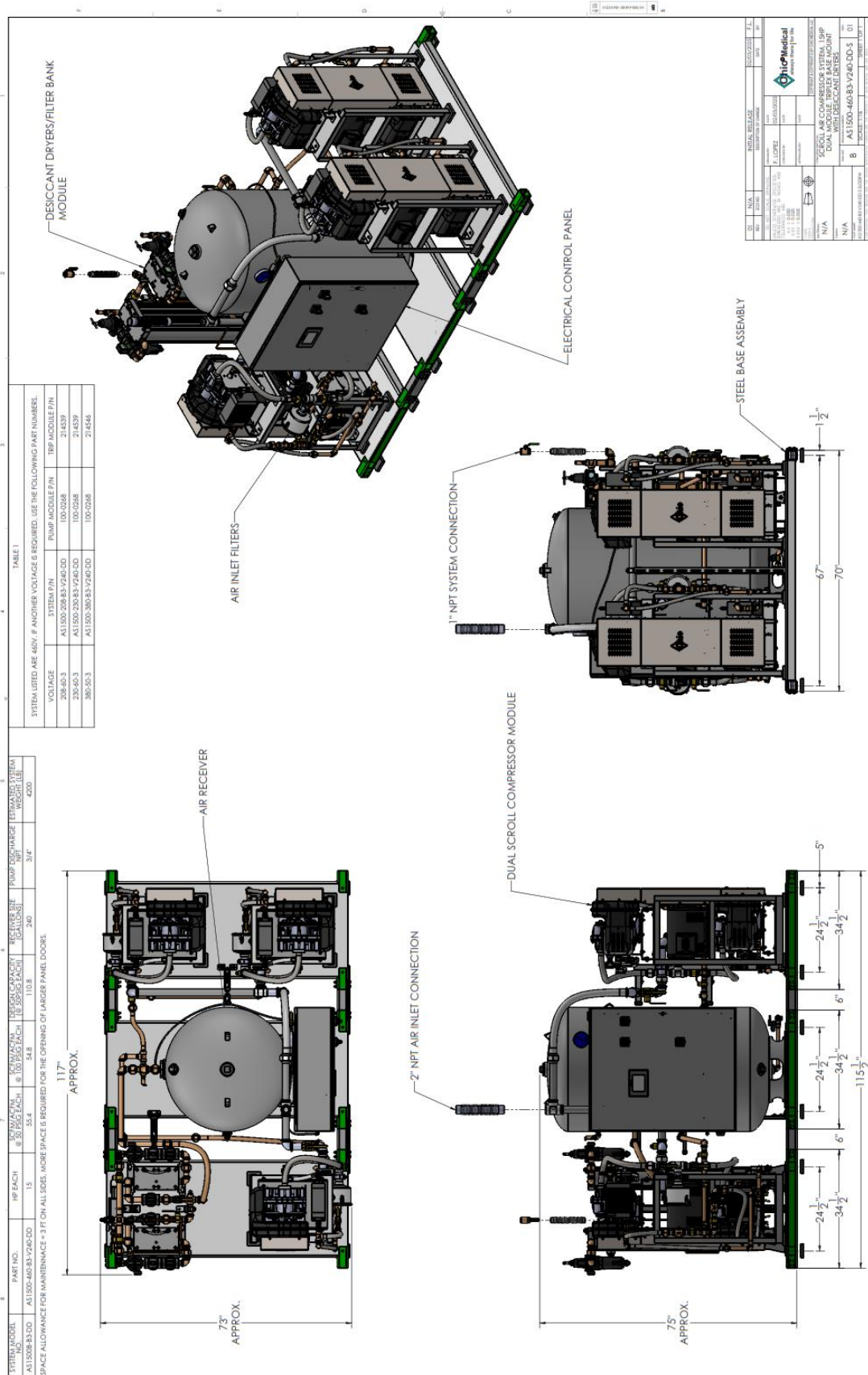
Standard features include lag alarm, automatic compressor alternation, adjustable minimum run timer, adjustable pressure settings, adjustable screen brightness, alarm history registry, and data logging. The panel has standard dry contacts and Modbus interface with building management systems. Ethernet and BACnet are available as options. The panel's maintenance menu includes service items and maintenance warnings, and it is programmed for both English and Spanish languages.

Configuration	Triplex Base Mount
System Capacity*	110.8 SCFM @ 50 psi 60 Hz. 116 SCFM @ 50 psi 50 Hz.
Horsepower (Each Pump)	15 HP
Horsepower (Total System)	45 HP
Available Voltage	208/230/460V 3 PH 60 Hz. 380V 3 PH 50 Hz. Contact Factory for other voltages
Full Load Amps 3 ph.	208 Volts: 147 230 Volts: 133.6 380 Volts: 76.7 460 Volts: 67
Tank Size	240 gallon vertical
Key Options	Bacterial filters for dryer/filter skid Can be configured for lab use without lag alarm Expandable for additional compressors

Scan here for compressor specifications and industry-leading parts support.



*System capacity is stated with one pump in reserve per NFPA. Capacity based on operation at sea level. For higher altitude, contact factory for adjusted capacity.



REV	DATE	DESCRIPTION	BY	CHKD
01	07/2025	INITIAL RELEASE		
02	07/2025	REVISION 1.0		
03	07/2025	REVISION 2.0		
04	07/2025	REVISION 3.0		
05	07/2025	REVISION 4.0		
06	07/2025	REVISION 5.0		
07	07/2025	REVISION 6.0		
08	07/2025	REVISION 7.0		
09	07/2025	REVISION 8.0		
10	07/2025	REVISION 9.0		
11	07/2025	REVISION 10.0		
12	07/2025	REVISION 11.0		
13	07/2025	REVISION 12.0		
14	07/2025	REVISION 13.0		
15	07/2025	REVISION 14.0		
16	07/2025	REVISION 15.0		
17	07/2025	REVISION 16.0		
18	07/2025	REVISION 17.0		
19	07/2025	REVISION 18.0		
20	07/2025	REVISION 19.0		
21	07/2025	REVISION 20.0		
22	07/2025	REVISION 21.0		
23	07/2025	REVISION 22.0		
24	07/2025	REVISION 23.0		
25	07/2025	REVISION 24.0		
26	07/2025	REVISION 25.0		
27	07/2025	REVISION 26.0		
28	07/2025	REVISION 27.0		
29	07/2025	REVISION 28.0		
30	07/2025	REVISION 29.0		
31	07/2025	REVISION 30.0		
32	07/2025	REVISION 31.0		
33	07/2025	REVISION 32.0		
34	07/2025	REVISION 33.0		
35	07/2025	REVISION 34.0		
36	07/2025	REVISION 35.0		
37	07/2025	REVISION 36.0		
38	07/2025	REVISION 37.0		
39	07/2025	REVISION 38.0		
40	07/2025	REVISION 39.0		
41	07/2025	REVISION 40.0		
42	07/2025	REVISION 41.0		
43	07/2025	REVISION 42.0		
44	07/2025	REVISION 43.0		
45	07/2025	REVISION 44.0		
46	07/2025	REVISION 45.0		
47	07/2025	REVISION 46.0		
48	07/2025	REVISION 47.0		
49	07/2025	REVISION 48.0		
50	07/2025	REVISION 49.0		
51	07/2025	REVISION 50.0		
52	07/2025	REVISION 51.0		
53	07/2025	REVISION 52.0		
54	07/2025	REVISION 53.0		
55	07/2025	REVISION 54.0		
56	07/2025	REVISION 55.0		
57	07/2025	REVISION 56.0		
58	07/2025	REVISION 57.0		
59	07/2025	REVISION 58.0		
60	07/2025	REVISION 59.0		
61	07/2025	REVISION 60.0		
62	07/2025	REVISION 61.0		
63	07/2025	REVISION 62.0		
64	07/2025	REVISION 63.0		
65	07/2025	REVISION 64.0		
66	07/2025	REVISION 65.0		
67	07/2025	REVISION 66.0		
68	07/2025	REVISION 67.0		
69	07/2025	REVISION 68.0		
70	07/2025	REVISION 69.0		
71	07/2025	REVISION 70.0		
72	07/2025	REVISION 71.0		
73	07/2025	REVISION 72.0		
74	07/2025	REVISION 73.0		
75	07/2025	REVISION 74.0		
76	07/2025	REVISION 75.0		
77	07/2025	REVISION 76.0		
78	07/2025	REVISION 77.0		
79	07/2025	REVISION 78.0		
80	07/2025	REVISION 79.0		
81	07/2025	REVISION 80.0		
82	07/2025	REVISION 81.0		
83	07/2025	REVISION 82.0		
84	07/2025	REVISION 83.0		
85	07/2025	REVISION 84.0		
86	07/2025	REVISION 85.0		
87	07/2025	REVISION 86.0		
88	07/2025	REVISION 87.0		
89	07/2025	REVISION 88.0		
90	07/2025	REVISION 89.0		
91	07/2025	REVISION 90.0		
92	07/2025	REVISION 91.0		
93	07/2025	REVISION 92.0		
94	07/2025	REVISION 93.0		
95	07/2025	REVISION 94.0		
96	07/2025	REVISION 95.0		
97	07/2025	REVISION 96.0		
98	07/2025	REVISION 97.0		
99	07/2025	REVISION 98.0		
100	07/2025	REVISION 99.0		
101	07/2025	REVISION 100.0		