

## AS750-S2-V120-DD Scroll Air System

System is NFPA compliant and has modular construction and interconnecting piping.

### PUMP MODULE

The belt driven oil-less scroll compressors deliver pressures up to 115 psi. Each scroll module includes the compressor; motor; drive belts with belt guard; inlet filter; isolation valve; aftercooler; temperature switch and relief valve.

### AIR TREATMENT MODULE

The system's air treatment module features dual desiccant dryers configured for energy savings. They purge only when needed per the dew point setting. The dew point transducer and CO transducer are integrated with the electrical panel. The module also contains prefilters, after filters, and activated carbon filters. Final line pressure regulators with gauges and relief valves are also part of the air treatment module.

### AIR RECEIVER

The receiver is constructed to ASME standards and is galvanized for corrosion resistance. A source isolation valve and 3 valve bypasses are provided with the receiver module. A pressure gauge and relief valve are included, along with a sight window and electric auto drain. Mounting pads and flexible connectors are provided.

### CONTROL PANEL

The UL listed electrical control panel features a high-definition color touch screen that can be set up externally without the use of toggle switches. The panel displays multiple conditions, including compressor running status, elapsed hours, pressure level, and audio/visual alarms.

Standard features include lag alarm, automatic compressor alternation, adjustable minimum run timer, adjustable pressure settings, adjustable screen brightness, alarm history registry, and data logging. The panel has standard dry contacts and Modbus interface with building management systems. Ethernet and BACnet are available as options. The panel's maintenance menu includes service items and maintenance warnings, and it is programmed for both English and Spanish languages.

<b>Configuration</b>	Duplex Stack Mount
<b>System Capacity*</b>	27.7 SCFM @ 50 psi 60 Hz. 23.1 SCFM @ 50 psi 50 Hz.
<b>Horsepower (Each Pump)</b>	7.5 HP
<b>Horsepower (Total System)</b>	15 HP
<b>Available Voltage</b>	208/230/460V 3 PH 60 Hz. 380V 3 PH 50 Hz. Contact Factory for other voltages
<b>Full Load Amps 3 PH</b>	208 Volts: 52.6 230 Volts: 47.8 380 Volts: 27.8 460 Volts: 24.0
<b>Tank Size</b>	120 gallon vertical
<b>Key Options</b>	Bacterial filters for dryer/filter skid Can be configured for lab use without lag alarm Expandable for additional compressors

*Click here for compressor specifications and industry-leading parts support.*



\*System capacity is stated with one pump in reserve per NFPA. Capacity based on operation at sea level. For higher altitude, contact factory for adjusted capacity.

SYSTEM MODEL NO.	PART NO.	HP EACH	SCHWACH-FM @ 50 PSIG EACH	SCHWACH-FM @ 100 PSIG EACH	DESIGN CAPACITY @ 50 PSIG EACH	RECEIVER SIZE (GALLONS)	PUMP DISCHARGE NPT	ESTIMATED SYSTEM WEIGHT (LB)
AS750-460-S2-V120-DD		7.5	27.7	27.4	27.7	120	3/4"	1550

SPACE ALLOWANCE FOR MAINTENANCE = 3 FT ON ALL SIDES. MORE SPACE REQUIRED FOR OPENING OF LARGER PANEL DOOR.

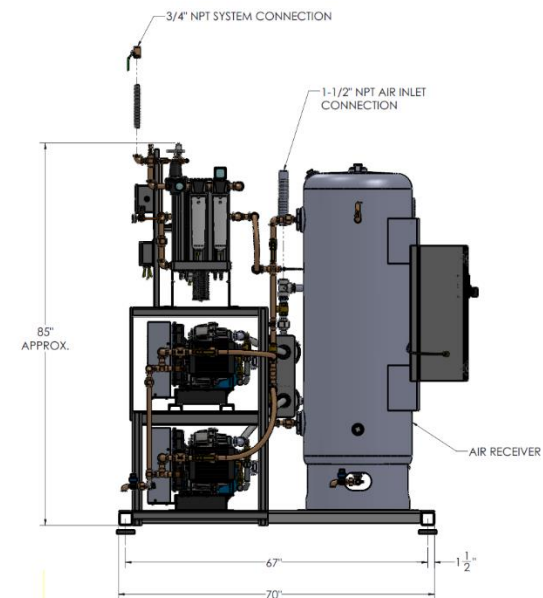
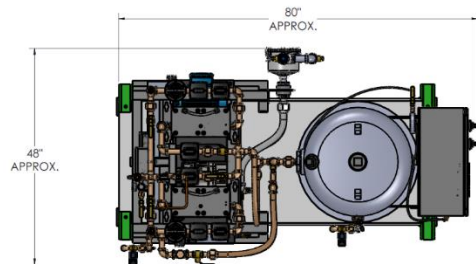
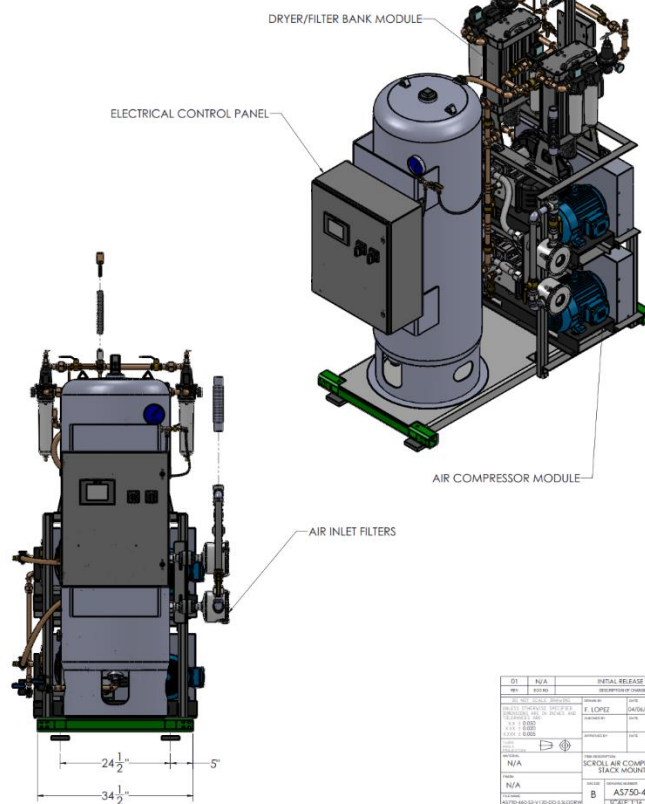


TABLE 1			
SYSTEM LISTED ARE 460V. IF ANOTHER VOLTAGE IS REQUIRED, USE THE FOLLOWING PART NUMBERS.			
VOLTAGE	SYSTEM P/N	PUMP MODULE P/N	TRIP MODULE P/N
208-460-3	AS750-208-S2-V120-DD	100-022B	214546
230-460-3	AS750-230-S2-V120-DD	100-022B	214546
380-50-3	AS750-380-S2-V120-DD	100-022B	214546



01	N/A	INITIAL RELEASE	DATE/0000	P/N
REV	1	REVISED	DATE	P/N
REV	2	REVISED	DATE	P/N
REV	3	REVISED	DATE	P/N
REV	4	REVISED	DATE	P/N
REV	5	REVISED	DATE	P/N
REV	6	REVISED	DATE	P/N
REV	7	REVISED	DATE	P/N
REV	8	REVISED	DATE	P/N
REV	9	REVISED	DATE	P/N
REV	10	REVISED	DATE	P/N
REV	11	REVISED	DATE	P/N
REV	12	REVISED	DATE	P/N
REV	13	REVISED	DATE	P/N
REV	14	REVISED	DATE	P/N
REV	15	REVISED	DATE	P/N
REV	16	REVISED	DATE	P/N
REV	17	REVISED	DATE	P/N
REV	18	REVISED	DATE	P/N
REV	19	REVISED	DATE	P/N
REV	20	REVISED	DATE	P/N
REV	21	REVISED	DATE	P/N
REV	22	REVISED	DATE	P/N
REV	23	REVISED	DATE	P/N
REV	24	REVISED	DATE	P/N
REV	25	REVISED	DATE	P/N
REV	26	REVISED	DATE	P/N
REV	27	REVISED	DATE	P/N
REV	28	REVISED	DATE	P/N
REV	29	REVISED	DATE	P/N
REV	30	REVISED	DATE	P/N
REV	31	REVISED	DATE	P/N
REV	32	REVISED	DATE	P/N
REV	33	REVISED	DATE	P/N
REV	34	REVISED	DATE	P/N
REV	35	REVISED	DATE	P/N
REV	36	REVISED	DATE	P/N
REV	37	REVISED	DATE	P/N
REV	38	REVISED	DATE	P/N
REV	39	REVISED	DATE	P/N
REV	40	REVISED	DATE	P/N
REV	41	REVISED	DATE	P/N
REV	42	REVISED	DATE	P/N
REV	43	REVISED	DATE	P/N
REV	44	REVISED	DATE	P/N
REV	45	REVISED	DATE	P/N
REV	46	REVISED	DATE	P/N
REV	47	REVISED	DATE	P/N
REV	48	REVISED	DATE	P/N
REV	49	REVISED	DATE	P/N
REV	50	REVISED	DATE	P/N
REV	51	REVISED	DATE	P/N
REV	52	REVISED	DATE	P/N
REV	53	REVISED	DATE	P/N
REV	54	REVISED	DATE	P/N
REV	55	REVISED	DATE	P/N
REV	56	REVISED	DATE	P/N
REV	57	REVISED	DATE	P/N
REV	58	REVISED	DATE	P/N
REV	59	REVISED	DATE	P/N
REV	60	REVISED	DATE	P/N
REV	61	REVISED	DATE	P/N
REV	62	REVISED	DATE	P/N
REV	63	REVISED	DATE	P/N
REV	64	REVISED	DATE	P/N
REV	65	REVISED	DATE	P/N
REV	66	REVISED	DATE	P/N
REV	67	REVISED	DATE	P/N
REV	68	REVISED	DATE	P/N
REV	69	REVISED	DATE	P/N
REV	70	REVISED	DATE	P/N
REV	71	REVISED	DATE	P/N
REV	72	REVISED	DATE	P/N
REV	73	REVISED	DATE	P/N
REV	74	REVISED	DATE	P/N
REV	75	REVISED	DATE	P/N
REV	76	REVISED	DATE	P/N
REV	77	REVISED	DATE	P/N
REV	78	REVISED	DATE	P/N
REV	79	REVISED	DATE	P/N
REV	80	REVISED	DATE	P/N
REV	81	REVISED	DATE	P/N
REV	82	REVISED	DATE	P/N
REV	83	REVISED	DATE	P/N
REV	84	REVISED	DATE	P/N
REV	85	REVISED	DATE	P/N
REV	86	REVISED	DATE	P/N
REV	87	REVISED	DATE	P/N
REV	88	REVISED	DATE	P/N
REV	89	REVISED	DATE	P/N
REV	90	REVISED	DATE	P/N
REV	91	REVISED	DATE	P/N
REV	92	REVISED	DATE	P/N
REV	93	REVISED	DATE	P/N
REV	94	REVISED	DATE	P/N
REV	95	REVISED	DATE	P/N
REV	96	REVISED	DATE	P/N
REV	97	REVISED	DATE	P/N
REV	98	REVISED	DATE	P/N
REV	99	REVISED	DATE	P/N
REV	100	REVISED	DATE	P/N