

AS750-S3-V120-DD Scroll Air System

System is NFPA compliant and has modular construction and interconnecting piping.

PUMP MODULE

The belt driven oil-less scroll compressors deliver pressures up to 115 psi. Each scroll module includes the compressor; motor; drive belts with belt guard; inlet filter; isolation valve; aftercooler; temperature switch and relief valve.

AIR TREATMENT MODULE

The system's air treatment module features dual desiccant dryers configured for energy savings. They purge only when needed per the dew point setting. The dew point transducer and CO transducer are integrated with the electrical panel. The module also contains prefilters, after filters, and activated carbon filters. Final line pressure regulators with gauges and relief valves are also part of the air treatment module.

AIR RECEIVER

The receiver is constructed to ASME standards and is galvanized for corrosion resistance. A source isolation valve and 3 valve bypasses are provided with the receiver module. A pressure gauge and relief valve are included, along with a sight window and electric auto drain. Mounting pads and flexible connectors are provided.

CONTROL PANEL

The UL listed electrical control panel features a high-definition color touch screen that can be set up externally without the use of toggle switches. The panel displays multiple conditions, including compressor running status, elapsed hours, pressure level, and audio/visual alarms.

Standard features include lag alarm, automatic compressor alternation, adjustable minimum run timer, adjustable pressure settings, adjustable screen brightness, alarm history registry, and data logging. The panel has standard dry contacts and Modbus interface with building management systems. Ethernet and BACnet are available as options. The panel's maintenance menu includes service items and maintenance warnings, and it is programmed for both English and Spanish languages.

Configuration	Triplex Stack Mount
System Capacity*	55.4 SCFM @ 50 psi 60 Hz. 46.1 SCFM @ 50 psi 50 Hz.
Horsepower (Each Pump)	7.5 HP
Horsepower (Total System)	22.5 HP
Available Voltage	208/230/460V 3 PH 60 Hz. 380V 3 PH 50 Hz. Contact Factory for other voltages
Full Load Amps 3 PH	208 Volts: 81 230 Volts: 73.6 380 Volts: 41.6 460 Volts: 37
Tank Size	120 gallon vertical
Key Options	Bacterial filters for dryer/filter skid Can be configured for lab use without lag alarm Expandable for additional compressors

Click here for compressor specifications and industry-leading parts support.

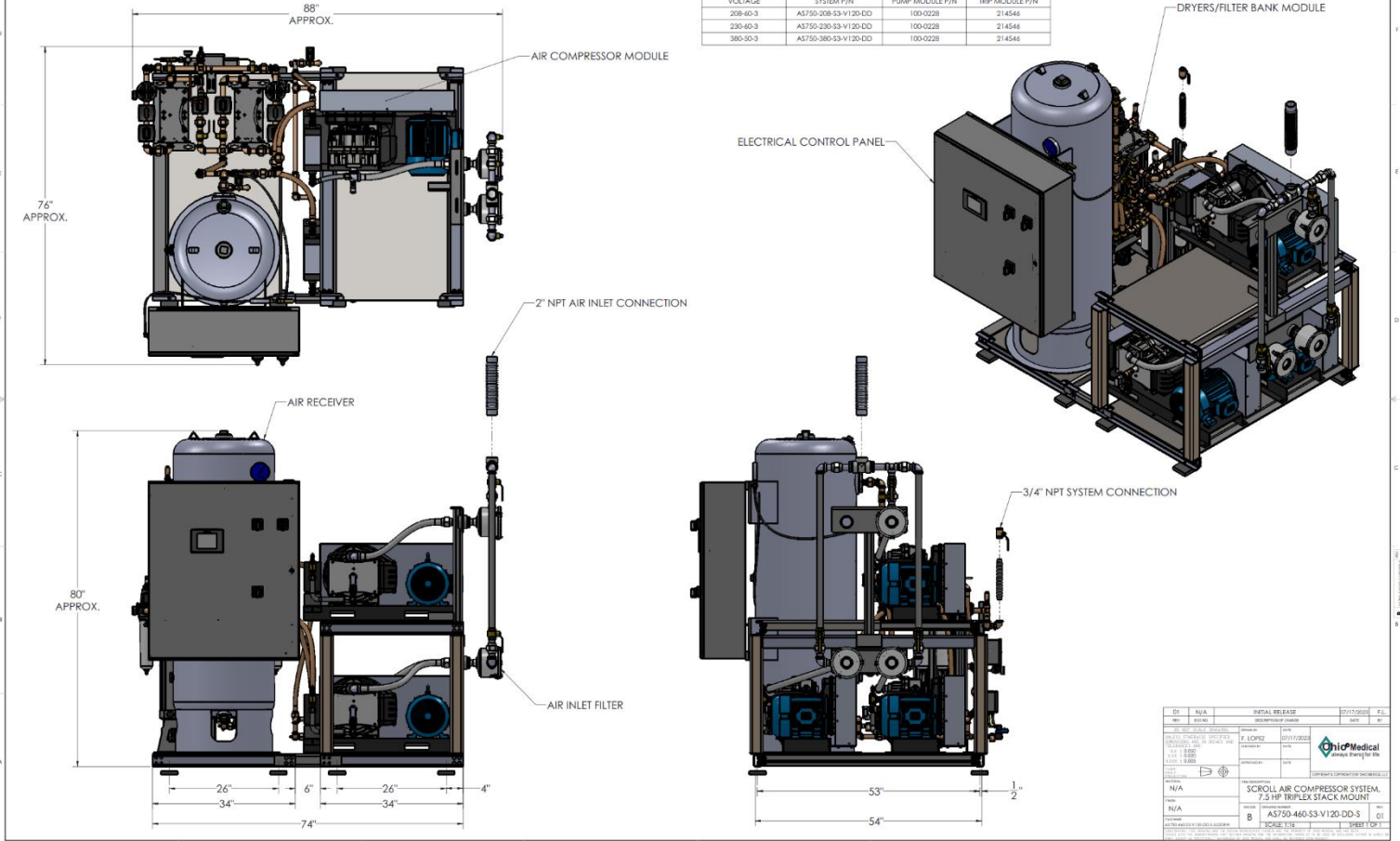


*System capacity is stated with one pump in reserve per NFPA. Capacity based on operation at sea level. For higher altitude, contact factory for adjusted capacity.

SYSTEM MODEL NO.	PART NO.	HP EACH	SCFM @ 50 PSIG EACH	SCFM @ 100 PSIG EACH	DESIGN CAPACITY (1 @ 50PSIG EACH)	RECEIVER SIZE (GALLONS)	PUMP DISCHARGE NPT	ESTIMATED SYSTEM WEIGHT (LB)
A5750-53-DD	A5750-460-53-V120-DD	7.5	27.7	27.4	55.4	120	3/4"	2450

SPACE ALLOWANCE FOR MAINTENANCE = 3 FT ON ALL SIDES. MORE SPACE IS REQUIRED FOR THE OPENING OF LARGER PANEL DOORS.

TABLE 1			
SYSTEM LISTED ARE 460V. IF ANOTHER VOLTAGE IS REQUIRED, USE THE FOLLOWING PART NUMBERS.			
VOLTAGE	SYSTEM P/N	PUMP MODULE P/N	TRIP MODULE P/N
208-460-3	A5750-208-53-V120-DD	100-022B	214546
230-460-3	A5750-230-53-V120-DD	100-022B	214546
380-50-3	A5750-380-53-V120-DD	100-022B	214546



Q1	N/A	INITIAL RELEASE	01/17/2020	P1
Q2	N/A	REWORKED PARTS	02/02/2020	P2
Q3	N/A	REWORKED PARTS	02/02/2020	P3
Q4	N/A	REWORKED PARTS	02/02/2020	P4
Q5	N/A	REWORKED PARTS	02/02/2020	P5
Q6	N/A	REWORKED PARTS	02/02/2020	P6
Q7	N/A	REWORKED PARTS	02/02/2020	P7
Q8	N/A	REWORKED PARTS	02/02/2020	P8
Q9	N/A	REWORKED PARTS	02/02/2020	P9
Q10	N/A	REWORKED PARTS	02/02/2020	P10
Q11	N/A	REWORKED PARTS	02/02/2020	P11
Q12	N/A	REWORKED PARTS	02/02/2020	P12
Q13	N/A	REWORKED PARTS	02/02/2020	P13
Q14	N/A	REWORKED PARTS	02/02/2020	P14
Q15	N/A	REWORKED PARTS	02/02/2020	P15
Q16	N/A	REWORKED PARTS	02/02/2020	P16
Q17	N/A	REWORKED PARTS	02/02/2020	P17
Q18	N/A	REWORKED PARTS	02/02/2020	P18
Q19	N/A	REWORKED PARTS	02/02/2020	P19
Q20	N/A	REWORKED PARTS	02/02/2020	P20
Q21	N/A	REWORKED PARTS	02/02/2020	P21
Q22	N/A	REWORKED PARTS	02/02/2020	P22
Q23	N/A	REWORKED PARTS	02/02/2020	P23
Q24	N/A	REWORKED PARTS	02/02/2020	P24
Q25	N/A	REWORKED PARTS	02/02/2020	P25
Q26	N/A	REWORKED PARTS	02/02/2020	P26
Q27	N/A	REWORKED PARTS	02/02/2020	P27
Q28	N/A	REWORKED PARTS	02/02/2020	P28
Q29	N/A	REWORKED PARTS	02/02/2020	P29
Q30	N/A	REWORKED PARTS	02/02/2020	P30
Q31	N/A	REWORKED PARTS	02/02/2020	P31
Q32	N/A	REWORKED PARTS	02/02/2020	P32
Q33	N/A	REWORKED PARTS	02/02/2020	P33
Q34	N/A	REWORKED PARTS	02/02/2020	P34
Q35	N/A	REWORKED PARTS	02/02/2020	P35
Q36	N/A	REWORKED PARTS	02/02/2020	P36
Q37	N/A	REWORKED PARTS	02/02/2020	P37
Q38	N/A	REWORKED PARTS	02/02/2020	P38
Q39	N/A	REWORKED PARTS	02/02/2020	P39
Q40	N/A	REWORKED PARTS	02/02/2020	P40
Q41	N/A	REWORKED PARTS	02/02/2020	P41
Q42	N/A	REWORKED PARTS	02/02/2020	P42
Q43	N/A	REWORKED PARTS	02/02/2020	P43
Q44	N/A	REWORKED PARTS	02/02/2020	P44
Q45	N/A	REWORKED PARTS	02/02/2020	P45
Q46	N/A	REWORKED PARTS	02/02/2020	P46
Q47	N/A	REWORKED PARTS	02/02/2020	P47
Q48	N/A	REWORKED PARTS	02/02/2020	P48
Q49	N/A	REWORKED PARTS	02/02/2020	P49
Q50	N/A	REWORKED PARTS	02/02/2020	P50
Q51	N/A	REWORKED PARTS	02/02/2020	P51
Q52	N/A	REWORKED PARTS	02/02/2020	P52
Q53	N/A	REWORKED PARTS	02/02/2020	P53
Q54	N/A	REWORKED PARTS	02/02/2020	P54
Q55	N/A	REWORKED PARTS	02/02/2020	P55
Q56	N/A	REWORKED PARTS	02/02/2020	P56
Q57	N/A	REWORKED PARTS	02/02/2020	P57
Q58	N/A	REWORKED PARTS	02/02/2020	P58
Q59	N/A	REWORKED PARTS	02/02/2020	P59
Q60	N/A	REWORKED PARTS	02/02/2020	P60
Q61	N/A	REWORKED PARTS	02/02/2020	P61
Q62	N/A	REWORKED PARTS	02/02/2020	P62
Q63	N/A	REWORKED PARTS	02/02/2020	P63
Q64	N/A	REWORKED PARTS	02/02/2020	P64
Q65	N/A	REWORKED PARTS	02/02/2020	P65
Q66	N/A	REWORKED PARTS	02/02/2020	P66
Q67	N/A	REWORKED PARTS	02/02/2020	P67
Q68	N/A	REWORKED PARTS	02/02/2020	P68
Q69	N/A	REWORKED PARTS	02/02/2020	P69
Q70	N/A	REWORKED PARTS	02/02/2020	P70
Q71	N/A	REWORKED PARTS	02/02/2020	P71
Q72	N/A	REWORKED PARTS	02/02/2020	P72
Q73	N/A	REWORKED PARTS	02/02/2020	P73
Q74	N/A	REWORKED PARTS	02/02/2020	P74
Q75	N/A	REWORKED PARTS	02/02/2020	P75
Q76	N/A	REWORKED PARTS	02/02/2020	P76
Q77	N/A	REWORKED PARTS	02/02/2020	P77
Q78	N/A	REWORKED PARTS	02/02/2020	P78
Q79	N/A	REWORKED PARTS	02/02/2020	P79
Q80	N/A	REWORKED PARTS	02/02/2020	P80
Q81	N/A	REWORKED PARTS	02/02/2020	P81
Q82	N/A	REWORKED PARTS	02/02/2020	P82
Q83	N/A	REWORKED PARTS	02/02/2020	P83
Q84	N/A	REWORKED PARTS	02/02/2020	P84
Q85	N/A	REWORKED PARTS	02/02/2020	P85
Q86	N/A	REWORKED PARTS	02/02/2020	P86
Q87	N/A	REWORKED PARTS	02/02/2020	P87
Q88	N/A	REWORKED PARTS	02/02/2020	P88
Q89	N/A	REWORKED PARTS	02/02/2020	P89
Q90	N/A	REWORKED PARTS	02/02/2020	P90
Q91	N/A	REWORKED PARTS	02/02/2020	P91
Q92	N/A	REWORKED PARTS	02/02/2020	P92
Q93	N/A	REWORKED PARTS	02/02/2020	P93
Q94	N/A	REWORKED PARTS	02/02/2020	P94
Q95	N/A	REWORKED PARTS	02/02/2020	P95
Q96	N/A	REWORKED PARTS	02/02/2020	P96
Q97	N/A	REWORKED PARTS	02/02/2020	P97
Q98	N/A	REWORKED PARTS	02/02/2020	P98
Q99	N/A	REWORKED PARTS	02/02/2020	P99
Q100	N/A	REWORKED PARTS	02/02/2020	P100