

# D1000-T2-H120 Oil-Less Rotary Vane Vacuum System

System is NFPA compliant and has modular construction and interconnecting piping.

## PUMP MODULE

Oil-less rotary vane vacuum pump. Each pump module is equipped with an inlet filter, check valve, and pump isolation valve.

## SYSTEM CONTROLS

The UL listed electrical control panel features a high-definition color touch screen that can be set up externally without the use of toggle switches. The panel displays multiple conditions, including pump running status, elapsed hours, vacuum level, and audio/visual alarms.

Standard features include lag alarm, automatic pump alternation, adjustable minimum run timer, adjustable vacuum settings, adjustable screen brightness, alarm history registry, and data logging. The panel has standard dry contacts and Modbus interface with building management systems. Ethernet and BACnet are available as options. The panel's maintenance menu includes service items and maintenance warnings, and it is programmed for both English and Spanish languages.

## VACUUM RECEIVER

Constructed to ASME standards and rated for full vacuum. Equipped with valved bypass, high visibility vacuum gauge, source isolation valve, and a manual drain valve. Mounting pads and flex connectors supplied for field installation.

## KEY OPTIONS

Variable Speed Drive Electrical Panel  
Configurable for Lab or Industrial Applications  
Gas Purge System for Lab use

<b>Configuration</b>	Duplex Tank Mount
<b>System Capacity*</b>	54.5 SCFM @ 19" Hg. 60 Hz. 45.4 SCFM @ 19" Hg. 50 Hz.
<b>Horsepower (Each Pump)</b>	10 HP
<b>Horsepower (Total System)</b>	20 HP
<b>Available Voltage</b>	208/230/460V 3 PH 60 Hz. 380V 3 PH 50 Hz. Contact Factory for other voltages
<b>Full Load Amps 3 ph.</b>	208 Volts: 62.8 230 Volts: 57.1 380 Volts: 34.8 460 Volts: 28.6
<b>Tank Size</b>	120 gallon horizontal
<b>Bacterial Filter Bank (option)</b>	BOM-MED FB-2



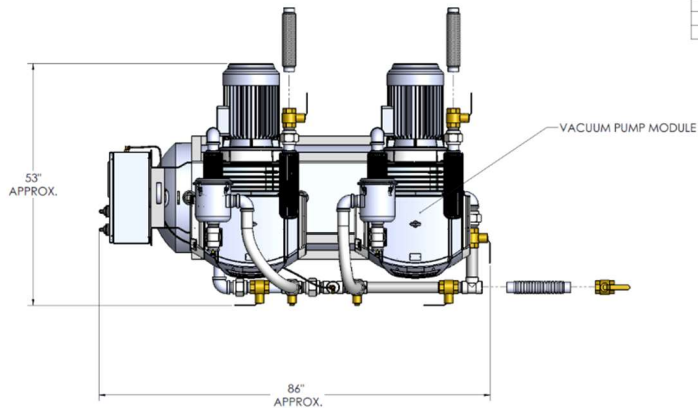
Click here for pump specifications  
and industry-leading parts support

\*System capacity is stated with one pump in reserve per NFPA. Capacity based on operation at sea level. For higher altitude, contact factory for adjusted capacity.

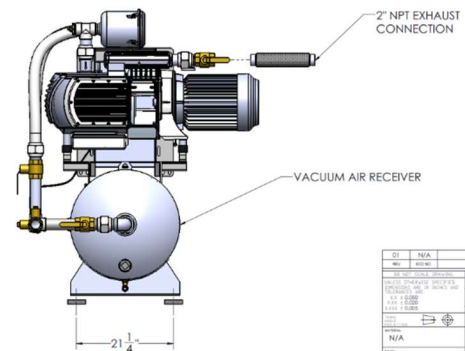
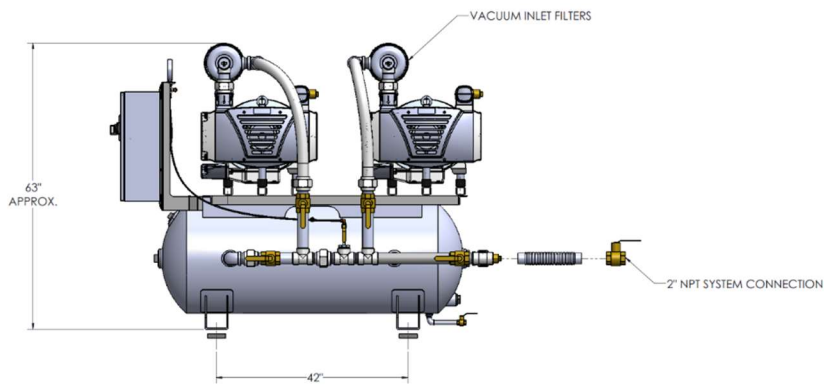
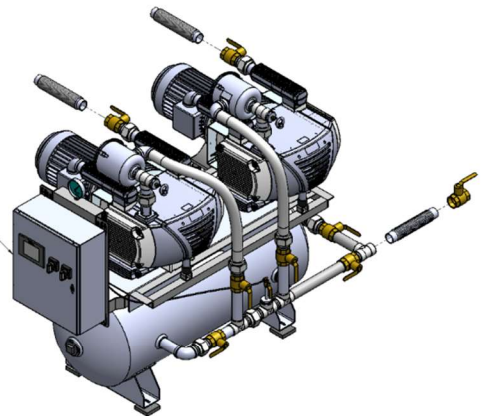
SYSTEM MODEL NO.	PART NO.	H.P. EACH	SCHEMATIC 1 (1/2" Hg EACH)	SCHEMATIC 2 (1/2" Hg EACH)	DESIGN CAPACITY (SCFM @ 1/2" Hg)	WHEELER SIZE (GALLONS)	PUMP INLET NPT	ESTIMATED SYSTEM WEIGHT LBS.
D1000B-T2	D1000-460-T2-H120	10	34.5 / 150	22 / 110	54.5	120	2"	1700

SPACE ALLOWANCE FOR MAINTENANCE = 3 FT. ON ALL SIDES, MORE SPACE IS REQUIRED FOR THE OPENING OF LARGER PANEL DOORS.

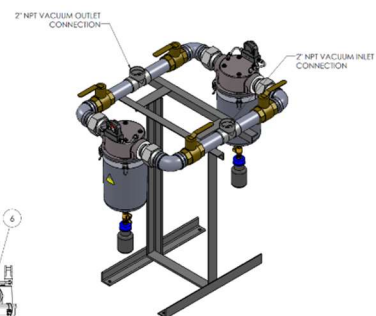
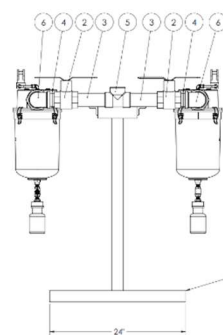
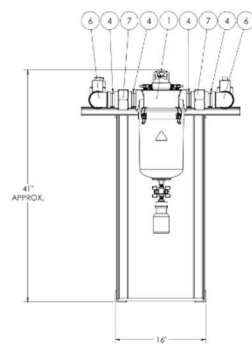
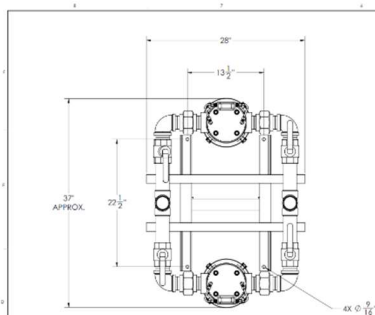
TABLE 1			
SYSTEMS LISTED ARE 460V. IF ANOTHER VOLTAGE IS REQUIRED, USE THE FOLLOWING PART NUMBERS.			
VOLTAGE	SYSTEM P/N	PUMP MODULE	TRP MODULE P/N
208-40-3	D1000-208-T2-H120	100-0211	214339
230-40-3	D1000-230-T2-H120	100-0211	214546
380-50-3	D1000-380-T2-H120	100-0211	214546



ELECTRICAL CONTROL PANEL



Q1	N/A	INITIAL RELEASE	06/23/18	F.L.
REV	001	DESCRIPTION	DATE	BY
001	001	001	06/23/18	001
002	002	002	06/23/18	001
003	003	003	06/23/18	001
004	004	004	06/23/18	001
005	005	005	06/23/18	001
006	006	006	06/23/18	001
007	007	007	06/23/18	001
008	008	008	06/23/18	001
009	009	009	06/23/18	001
010	010	010	06/23/18	001
011	011	011	06/23/18	001
012	012	012	06/23/18	001
013	013	013	06/23/18	001
014	014	014	06/23/18	001
015	015	015	06/23/18	001
016	016	016	06/23/18	001
017	017	017	06/23/18	001
018	018	018	06/23/18	001
019	019	019	06/23/18	001
020	020	020	06/23/18	001
021	021	021	06/23/18	001
022	022	022	06/23/18	001
023	023	023	06/23/18	001
024	024	024	06/23/18	001
025	025	025	06/23/18	001
026	026	026	06/23/18	001
027	027	027	06/23/18	001
028	028	028	06/23/18	001
029	029	029	06/23/18	001
030	030	030	06/23/18	001
031	031	031	06/23/18	001
032	032	032	06/23/18	001
033	033	033	06/23/18	001
034	034	034	06/23/18	001
035	035	035	06/23/18	001
036	036	036	06/23/18	001
037	037	037	06/23/18	001
038	038	038	06/23/18	001
039	039	039	06/23/18	001
040	040	040	06/23/18	001
041	041	041	06/23/18	001
042	042	042	06/23/18	001
043	043	043	06/23/18	001
044	044	044	06/23/18	001
045	045	045	06/23/18	001
046	046	046	06/23/18	001
047	047	047	06/23/18	001
048	048	048	06/23/18	001
049	049	049	06/23/18	001
050	050	050	06/23/18	001
051	051	051	06/23/18	001
052	052	052	06/23/18	001
053	053	053	06/23/18	001
054	054	054	06/23/18	001
055	055	055	06/23/18	001
056	056	056	06/23/18	001
057	057	057	06/23/18	001
058	058	058	06/23/18	001
059	059	059	06/23/18	001
060	060	060	06/23/18	001
061	061	061	06/23/18	001
062	062	062	06/23/18	001
063	063	063	06/23/18	001
064	064	064	06/23/18	001
065	065	065	06/23/18	001
066	066	066	06/23/18	001
067	067	067	06/23/18	001
068	068	068	06/23/18	001
069	069	069	06/23/18	001
070	070	070	06/23/18	001
071	071	071	06/23/18	001
072	072	072	06/23/18	001
073	073	073	06/23/18	001
074	074	074	06/23/18	001
075	075	075	06/23/18	001
076	076	076	06/23/18	001
077	077	077	06/23/18	001
078	078	078	06/23/18	001
079	079	079	06/23/18	001
080	080	080	06/23/18	001
081	081	081	06/23/18	001
082	082	082	06/23/18	001
083	083	083	06/23/18	001
084	084	084	06/23/18	001
085	085	085	06/23/18	001
086	086	086	06/23/18	001
087	087	087	06/23/18	001
088	088	088	06/23/18	001
089	089	089	06/23/18	001
090	090	090	06/23/18	001
091	091	091	06/23/18	001
092	092	092	06/23/18	001
093	093	093	06/23/18	001
094	094	094	06/23/18	001
095	095	095	06/23/18	001
096	096	096	06/23/18	001
097	097	097	06/23/18	001
098	098	098	06/23/18	001
099	099	099	06/23/18	001
100	100	100	06/23/18	001



ITEM NO.	QTY.	PART NUMBER	DESCRIPTION	REMARKS
1	2	200011	2" NPT ISOLATION VALVE	
2	4	200008	2" NPT NPT/FL	
3	4	A-10100-37	2" NPT NPT/FL	
4	12	A-12101-9	2" NPT CLOSE NPT/FL	
5	2	A-12101-9	2" NPT/FL	
6	4	A-12101-9	2" NPT/FL	
7	4	A-12101-9	2" NPT/FL	
8	1	200001	WELDED BASE MEDICAL PUMP BANK 2" NPT	

Q1	N/A	INITIAL RELEASE	06/23/18	F.L.
REV	001	DESCRIPTION	DATE	BY
001	001	001	06/23/18	001
002	002	002	06/23/18	001
003	003	003	06/23/18	001
004	004	004	06/23/18	001
005	005	005	06/23/18	001
006	006	006	06/23/18	001
007	007	007	06/23/18	001
008	008	008	06/23/18	001
009	009	009	06/23/18	001
010	010	010	06/23/18	001
011	011	011	06/23/18	001
012	012	012	06/23/18	001
013	013	013	06/23/18	001
014	014	014	06/23/18	001
015	015	015	06/23/18	001
016	016	016	06/23/18	001
017	017	017	06/23/18	001
018	018	018	06/23/18	001
019	019	019	06/23/18	001
020	020	020	06/23/18	001
021	021	021	06/23/18	001
022	022	022	06/23/18	001
023	023	023	06/23/18	001
024	024	024	06/23/18	001
025	025	025	06/23/18	001
026	026	026	06/23/18	001
027	027	027	06/23/18	001
028	028	028	06/23/18	001
029	029	029	06/23/18	001
030	030	030	06/23/18	001
031	031	031	06/23/18	001
032	032	032	06/23/18	001
033	033	033	06/23/18	001
034	034	034	06/23/18	001
035	035	035	06/23/18	001
036	036	036	06/23/18	001
037	037	037	06/23/18	001
038	038	038	06/23/18	001
039	039	039	06/23/18	001
040	040	040	06/23/18	001
041	041	041	06/23/18	001
042	042	042	06/23/18	001
043	043	043	06/23/18	001
044	044	044	06/23/18	001
045	045	045	06/23/18	001
046	046	046	06/23/18	001
047	047	047	06/23/18	001
048	048	048	06/23/18	001
049	049	049	06/23/18	001
050	050	050	06/23/18	001
051	051	051	06/23/18	001
052	052	052	06/23/18	001
053	053	053	06/23/18	001
054	054	054	06/23/18	001
055	055	055	06/23/18	001
056	056	056	06/23/18	001
057	057	057	06/23/18	001
058	058	058	06/23/18	001
059	059	059	06/23/18	001
060	060	060	06/23/18	001
061	061	061	06/23/18	001
062	062	062	06/23/18	001
063	063	063	06/23/18	001
064	064	064	06/23/18	001
065	065	065	06/23/18	001
066	066	066	06/23/18	001
067	067	067	06/23/18	001
068	068	068	06/23/18	001
069	069	069	06/23/18	001
070	070	070	06/23/18	001
071	071	071	06/23/18	001
072	072	072	06/23/18	001
073	073	073	06/23/18	001
074	074	074	06/23/18	001
075	075	075	06/23/18	001
076	076	076	06/23/18	001
077	077	077	06/23/18	001
078	078	078	06/23/18	001
079	079	079	06/23/18	001
080	080	080	06/23/18	001
081	081	081	06/23/18	001
082	082	082	06/23/18	001
083	083	083	06/23/18	001
084	084	084	06/23/18	001
085	085	085	06/23/18	001
086	086	086	06/23/18	001
087	087	087	06/23/18	001
088	088	088	06/23/18	001
089	089	089	06/23/18	001
090	090	090	06/23/18	001
091	091	091	06/23/18	001
092	092	092	06/23/18	001
093	093	093	06/23/18	001
094	094	094	06/23/18	001
095	095	095	06/23/18	001
096	096	096	06/23/18	001
097	097	097	06/23/18	001
098	098	098	06/23/18	001
099	099	099	06/23/18	001
100	100	100	06/23/18	001