

# S1500-S3-V240 Rotary Vane Medical Vacuum System

System is NFPA compliant and has modular construction and interconnecting piping.

## PUMP MODULE

Oil sealed rotary vane vacuum pump with NEMA motor. Each pump module is equipped with an inlet filter, check valve, pump isolation valve, and temperature switch.

## SYSTEM CONTROLS

The UL listed electrical control panel features a high-definition color touch screen that can be set up externally without the use of toggle switches. The panel displays multiple conditions, including pump running status, elapsed hours, vacuum level, and audio/visual alarms.

Standard features include lag alarm, automatic pump alternation, adjustable minimum run timer, adjustable vacuum settings, adjustable screen brightness, alarm history registry, and data logging. The panel has standard dry contacts and Modbus interface with building management systems. Ethernet and BACnet are available as options. The panel's maintenance menu includes service items and maintenance warnings, and it is programmed for both English and Spanish languages.

## VACUUM RECEIVER

Constructed to ASME standards and rated for full vacuum. Equipped with valved bypass, high visibility vacuum gauge, source isolation valve, and a manual drain valve. Mounting pads and flex connectors supplied for field installation.

## KEY OPTIONS

Variable Speed Drive Electrical Panel  
Configurable for Lab or Industrial Applications  
Gas Purge System for Lab use

<b>Configuration</b>	Triplex Stack Mount
<b>System Capacity*</b>	224.2 SCFM @ 19" Hg. 60 Hz. 186.8 SCFM @ 19" Hg. 50 Hz.
<b>Horsepower (Each Pump)</b>	15 HP
<b>Horsepower (Total System)</b>	45 HP
<b>Available Voltage</b>	208/230/460V 3 PH 60 Hz. 380V 3 PH 50 Hz. Contact Factory for other voltages
<b>Full Load Amps 3 PH</b>	208 Volts: 141 230 Volts: 128.2 380 Volts: 76.2 460 Volts: 64.2
<b>Tank Size</b>	240 gallon vertical
<b>Bacterial Filter Bank (option)</b>	BOM-MED FB-4



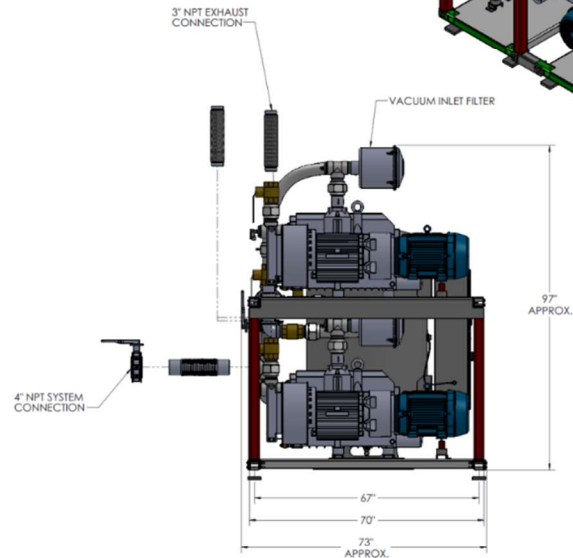
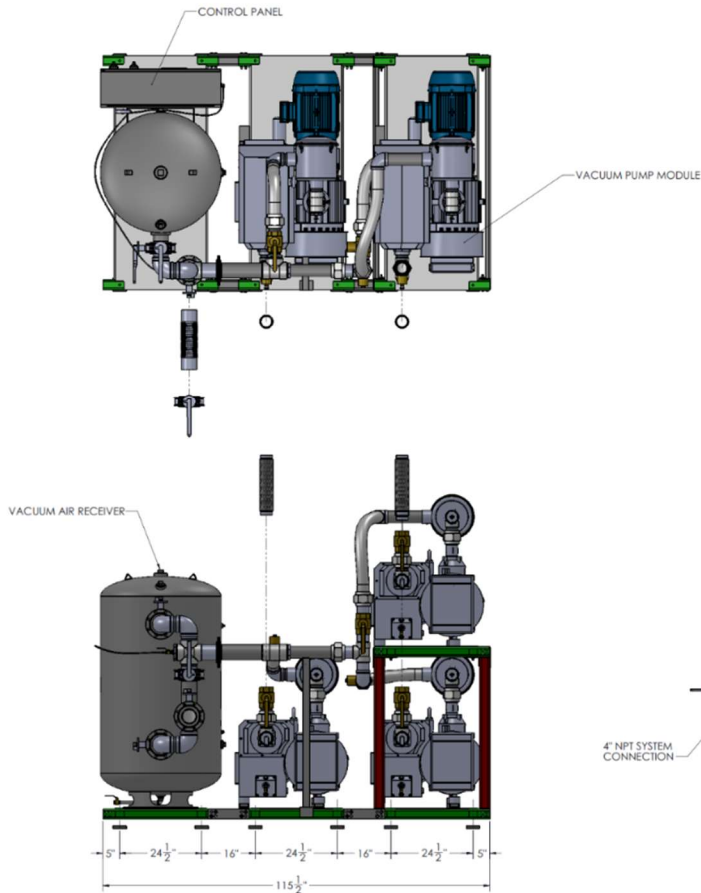
Click here for pump specifications  
and industry-leading parts support

\*System capacity is stated with one pump in reserve per NFPA. Capacity based on operation at sea level.  
For higher altitude, contact factory for adjusted capacity.

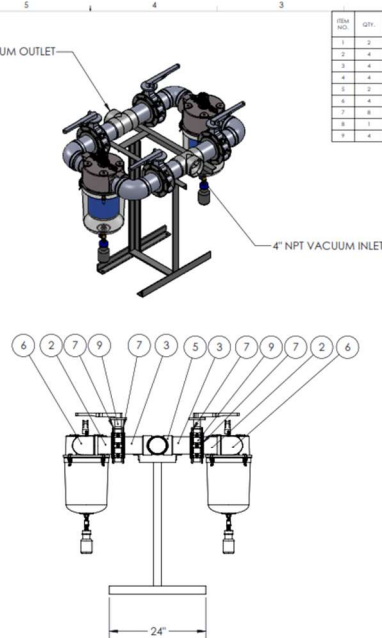
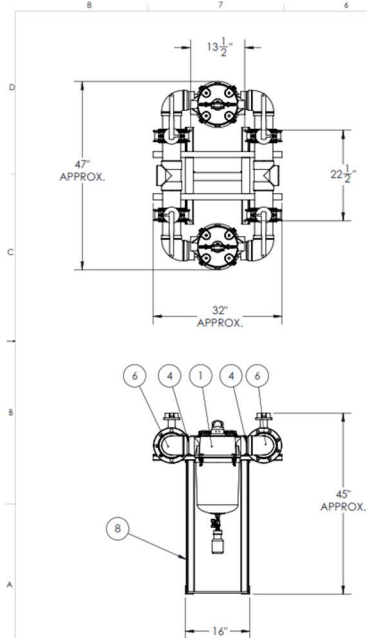
SYSTEM MODEL NO.	PART NO.	HP EACH	SCHEMATIC @ 19" HG EACH	SCHEMATIC @ 25" HG EACH	DESIGN CAPACITY (8 1/2" HG EACH)	RECYCLE 100 (GALLONS)	PUMP INLET NPT	ESTIMATED SYSTEM WEIGHT (LB)
S1500B-373	S1500-460-S3-V240	15.0	112 / 1 / 308	51 / 306	224.2	240	3"	5800

SPACE ALLOWANCE FOR MAINTENANCE = 5 FT. ON ALL SIDES. MORE SPACE IS REQUIRED FOR THE OPENING OF LARGER PANEL DOORS.

TABLE 1			
SYSTEM LISTED ARE 460V. IF ANOTHER VOLTAGE IS REQUIRED, USE THE FOLLOWING PART NUMBERS.			
VOLTAGE	SYSTEM P/N	PUMP MODULE P/N	TRP MODULE P/N
208-40-3	S1500-208-S3-V240	100-0207	214539
230-40-3	S1500-230-S3-V240	100-0207	214539
380-50-3	S1500-380-S3-V240	100-0207	214546



QTY	DESCRIPTION	QTY	DESCRIPTION
1	ROTARY VANE VACUUM PUMP SYSTEM (320) 15HP TRIPLEX STACK MOUNTED	1	ROTARY VANE VACUUM PUMP SYSTEM (320) 15HP TRIPLEX STACK MOUNTED
1	ROTARY VANE VACUUM PUMP SYSTEM (320) 15HP TRIPLEX STACK MOUNTED	1	ROTARY VANE VACUUM PUMP SYSTEM (320) 15HP TRIPLEX STACK MOUNTED



IDEN NO.	QTY	PART NUMBER	DESCRIPTION	REV
1	3	230114	MEDICAL VACUUM FILTER 0.2 MICRON 4" NPT	
2	4	A-12100-41	4 X 4" NPT NIPPLE	
3	4	A-12100-80	4 X 4" NPT NIPPLE	
4	4	A-12100-13	4" NPT CLOSE NIPPLE	
5	2	A-12100-13	4" Threaded Tee	
6	4	A-12100-13	4" NPT ELBOW	
7	8	B-14404-9	FLANGE 4"	
8	1	14404-10-14	WELDED BASE MEDICAL FILTER BANK 4" NPT	
9	4	BUT-4	BUTTERFLY VALVE 4"	

QTY	DESCRIPTION	QTY	DESCRIPTION
1	ROTARY VANE VACUUM PUMP SYSTEM (320) 15HP TRIPLEX STACK MOUNTED	1	ROTARY VANE VACUUM PUMP SYSTEM (320) 15HP TRIPLEX STACK MOUNTED
1	ROTARY VANE VACUUM PUMP SYSTEM (320) 15HP TRIPLEX STACK MOUNTED	1	ROTARY VANE VACUUM PUMP SYSTEM (320) 15HP TRIPLEX STACK MOUNTED