

S1500-S4-V240 Rotary Vane Medical Vacuum System

System is NFPA compliant and has modular construction and interconnecting piping.

PUMP MODULE

Oil sealed rotary vane vacuum pump with NEMA motor. Each pump module is equipped with an inlet filter, check valve, pump isolation valve, and temperature switch.

SYSTEM CONTROLS

The UL listed electrical control panel features a high-definition color touch screen that can be set up externally without the use of toggle switches. The panel displays multiple conditions, including pump running status, elapsed hours, vacuum level, and audio/visual alarms.

Standard features include lag alarm, automatic pump alternation, adjustable minimum run timer, adjustable vacuum settings, adjustable screen brightness, alarm history registry, and data logging. The panel has standard dry contacts and Modbus interface with building management systems. Ethernet and BACnet are available as options. The panel's maintenance menu includes service items and maintenance warnings, and it is programmed for both English and Spanish languages.

VACUUM RECEIVER

Constructed to ASME standards and rated for full vacuum. Equipped with valved bypass, high visibility vacuum gauge, source isolation valve, and a manual drain valve. Mounting pads and flex connectors supplied for field installation.

KEY OPTIONS

Variable Speed Drive Electrical Panel
Configurable for Lab or Industrial Applications
Gas Purge System for Lab use

Configuration	Quad Stack Mount
System Capacity*	336.3 SCFM @ 19" Hg. 60 Hz. 280.1 SCFM @ 19" Hg. 50 Hz.
Horsepower (Each Pump)	15 HP
Horsepower (Total System)	60 HP
Available Voltage	208/230/460V 3 PH 60 Hz. 380V 3 PH 50 Hz. Contact Factory for other voltages
Full Load Amps 3 PH	208 Volts: 187.8 230 Volts: 170.8 380 Volts: 101.7 460 Volts: 85.5
Tank Size	240 gallon vertical
Bacterial Filter Bank (option)	BOM-MED FB-3X2



Click here for pump specifications
and industry-leading parts support

*System capacity is stated with one pump in reserve per NFPA. Capacity based on operation at sea level.
For higher altitude, contact factory for adjusted capacity.

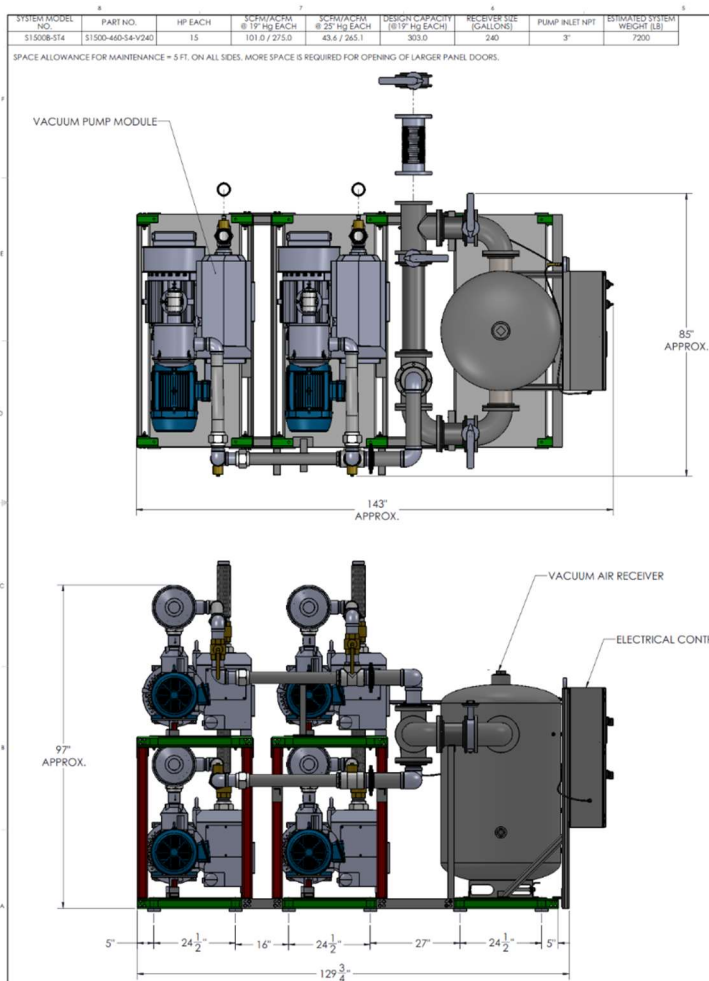
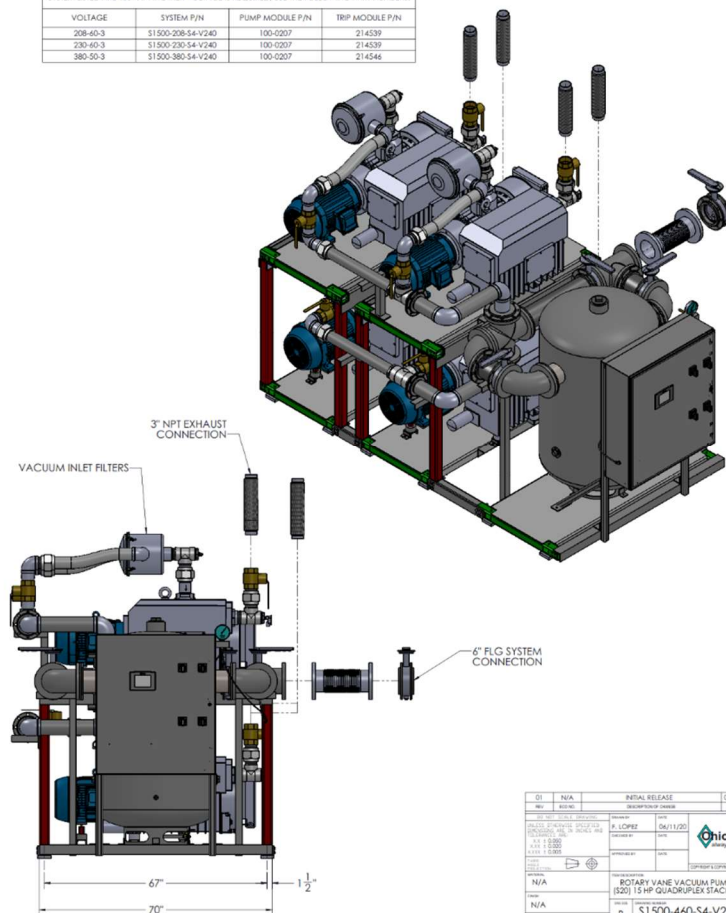


TABLE 1

SYSTEM LISTED ARE 460V. IF ANOTHER VOLTAGE IS REQUIRED, USE THE FOLLOWING PART NUMBERS.

VOLTAGE	SYSTEM P/N	PUMP MODULE P/N	TRP MODULE P/N
208-460-3	S1500-208-S4-V240	100-0207	214539
230-460-3	S1500-230-S4-V240	100-0207	214539
380-50-3	S1500-380-S4-V240	100-0207	214546



Q1	N/A	INITIAL RELEASE	06/11/20	F.L.
Q2	800-90	DISCONTINUED		
Q3		DATE	06/11/20	
Q4		DATE		
Q5		DATE		
Q6		DATE		
Q7		DATE		
Q8		DATE		
Q9		DATE		
Q10		DATE		
Q11		DATE		
Q12		DATE		
Q13		DATE		
Q14		DATE		
Q15		DATE		
Q16		DATE		
Q17		DATE		
Q18		DATE		
Q19		DATE		
Q20		DATE		
Q21		DATE		
Q22		DATE		
Q23		DATE		
Q24		DATE		
Q25		DATE		
Q26		DATE		
Q27		DATE		
Q28		DATE		
Q29		DATE		
Q30		DATE		
Q31		DATE		
Q32		DATE		
Q33		DATE		
Q34		DATE		
Q35		DATE		
Q36		DATE		
Q37		DATE		
Q38		DATE		
Q39		DATE		
Q40		DATE		
Q41		DATE		
Q42		DATE		
Q43		DATE		
Q44		DATE		
Q45		DATE		
Q46		DATE		
Q47		DATE		
Q48		DATE		
Q49		DATE		
Q50		DATE		
Q51		DATE		
Q52		DATE		
Q53		DATE		
Q54		DATE		
Q55		DATE		
Q56		DATE		
Q57		DATE		
Q58		DATE		
Q59		DATE		
Q60		DATE		
Q61		DATE		
Q62		DATE		
Q63		DATE		
Q64		DATE		
Q65		DATE		
Q66		DATE		
Q67		DATE		
Q68		DATE		
Q69		DATE		
Q70		DATE		
Q71		DATE		
Q72		DATE		
Q73		DATE		
Q74		DATE		
Q75		DATE		
Q76		DATE		
Q77		DATE		
Q78		DATE		
Q79		DATE		
Q80		DATE		
Q81		DATE		
Q82		DATE		
Q83		DATE		
Q84		DATE		
Q85		DATE		
Q86		DATE		
Q87		DATE		
Q88		DATE		
Q89		DATE		
Q90		DATE		
Q91		DATE		
Q92		DATE		
Q93		DATE		
Q94		DATE		
Q95		DATE		
Q96		DATE		
Q97		DATE		
Q98		DATE		
Q99		DATE		
Q100		DATE		

