

S2500-S2-V240 Rotary Vane Medical Vacuum System

System is NFPA compliant and has modular construction and interconnecting piping.

PUMP MODULE

Oil sealed rotary vane vacuum pump with NEMA motor. Each pump module is equipped with an inlet filter, check valve, pump isolation valve, and temperature switch.

SYSTEM CONTROLS

The UL listed electrical control panel features a high-definition color touch screen that can be set up externally without the use of toggle switches. The panel displays multiple conditions, including pump running status, elapsed hours, vacuum level, and audio/visual alarms.

Standard features include lag alarm, automatic pump alternation, adjustable minimum run timer, adjustable vacuum settings, adjustable screen brightness, alarm history registry, and data logging. The panel has standard dry contacts and Modbus interface with building management systems. Ethernet and BACnet are available as options. The panel's maintenance menu includes service items and maintenance warnings, and it is programmed for both English and Spanish languages.

VACUUM RECEIVER

Constructed to ASME standards and rated for full vacuum. Equipped with valved bypass, high visibility vacuum gauge, source isolation valve, and a manual drain valve. Mounting pads and flex connectors supplied for field installation.

KEY OPTIONS

Variable Speed Drive Electrical Panel
Configurable for Lab or Industrial Applications
Gas Purge System for Lab use

Configuration	Duplex Stack Mount
System Capacity*	172.2 SCFM @ 19" Hg. 60 Hz. 143.4 SCFM @ 19" Hg. 50 Hz.
Horsepower (Each Pump)	25 HP
Horsepower (Total System)	50 HP
Available Voltage	208/230/460V 3 PH 60 Hz. 380V 3 PH 50 Hz. Contact Factory for other voltages
Full Load Amps 3 PH	208 Volts: 150.8 230 Volts: 137.1 380 Volts: 82.8 460 Volts: 68.6
Tank Size	240 gallon vertical
Bacterial Filter Bank (option)	BOM-MED FB-3



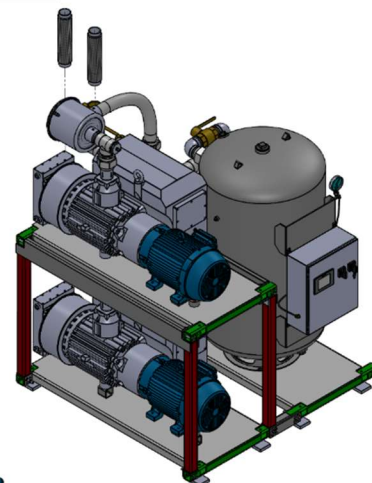
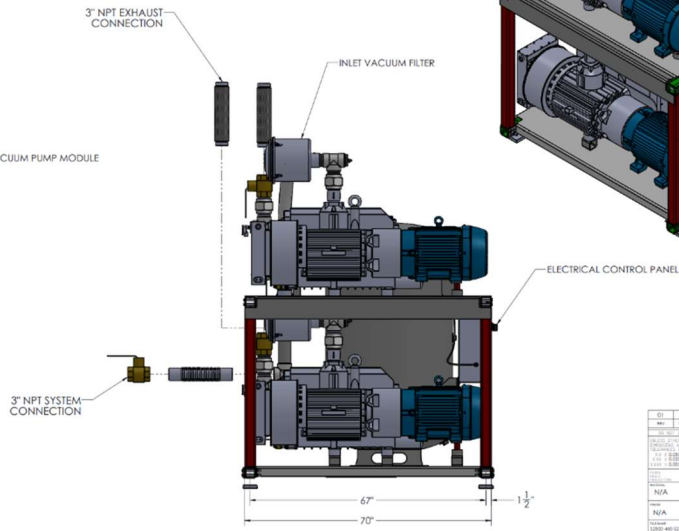
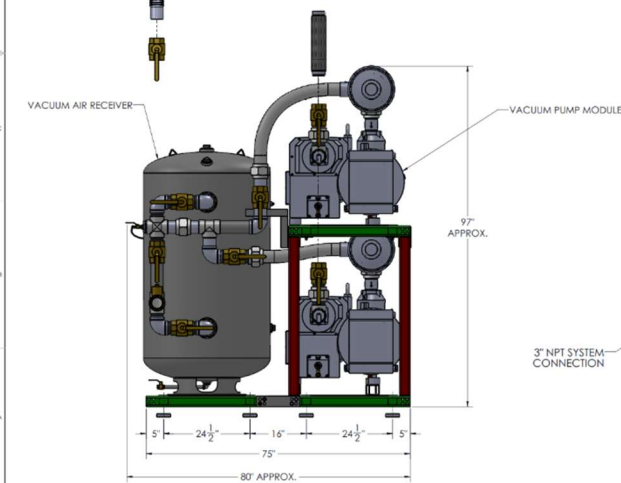
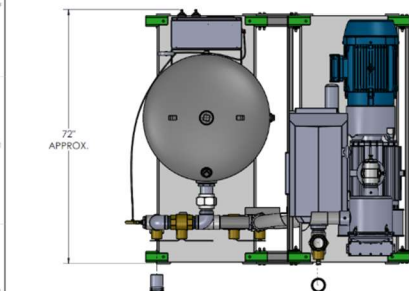
Click here for pump specifications
and industry-leading parts support

*System capacity is stated with one pump in reserve per NFPA. Capacity based on operation at sea level.
For higher altitude, contact factory for adjusted capacity.

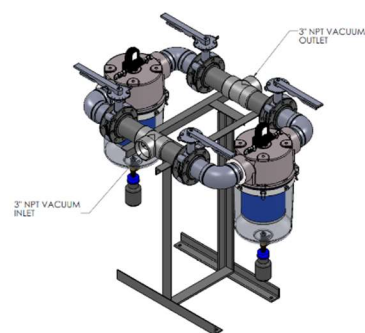
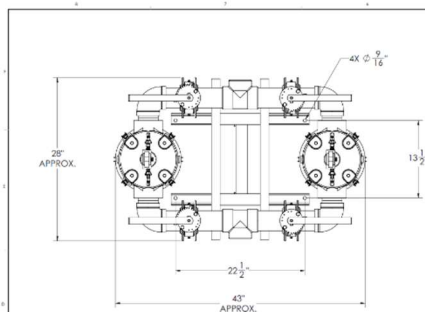
SYSTEM MODEL NO.	PART NO.	HP EACH	SCHWABCM 8" (1" IN) EACH	SCHWABCM 8" (1" IN) EACH	DESIGN CAPACITY (18" IN) EACH	RESERVE SOL (GALLONS)	PUMP INLET NPT	ESTIMATED SYSTEM WEIGHT (LBS)
S2500-460	S2500-460-S2-V240	25	172.0 (470.0)	48.5 (411.0)	172.0	240	3"	4950

SPACE ALLOWANCE FOR MAINTENANCE = 5 FT. ON ALL SIDES. MORE SPACE IS REQUIRED FOR THE OPENING OF LARGER PANEL DOOR.

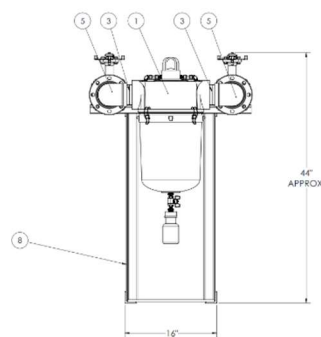
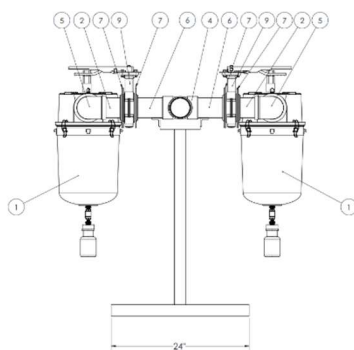
TABLE 1			
SYSTEM LISTED ARE 460V. IF ANOTHER VOLTAGE IS REQUIRED, USE THE FOLLOWING PART NUMBERS.			
VOLTAGE	SYSTEM P/N	PUMP MODULE P/N	TRP MODULE P/N
208-460-3	S2500-208-S2-V240	100-0209	N/A
230-460-3	S2500-230-S2-V240	100-0209	214539
380-50-3	S2500-380-S2-V240	100-0209	214539



REV	NO	DATE	DESCRIPTION	BY	CHK
1	1	02/08/18	INITIAL RELEASE		
2	2	02/08/18	REVISION		
3	3	02/08/18	REVISION		
4	4	02/08/18	REVISION		
5	5	02/08/18	REVISION		
6	6	02/08/18	REVISION		
7	7	02/08/18	REVISION		
8	8	02/08/18	REVISION		
9	9	02/08/18	REVISION		
10	10	02/08/18	REVISION		
11	11	02/08/18	REVISION		
12	12	02/08/18	REVISION		
13	13	02/08/18	REVISION		
14	14	02/08/18	REVISION		
15	15	02/08/18	REVISION		
16	16	02/08/18	REVISION		
17	17	02/08/18	REVISION		
18	18	02/08/18	REVISION		
19	19	02/08/18	REVISION		
20	20	02/08/18	REVISION		
21	21	02/08/18	REVISION		
22	22	02/08/18	REVISION		
23	23	02/08/18	REVISION		
24	24	02/08/18	REVISION		
25	25	02/08/18	REVISION		
26	26	02/08/18	REVISION		
27	27	02/08/18	REVISION		
28	28	02/08/18	REVISION		
29	29	02/08/18	REVISION		
30	30	02/08/18	REVISION		
31	31	02/08/18	REVISION		
32	32	02/08/18	REVISION		
33	33	02/08/18	REVISION		
34	34	02/08/18	REVISION		
35	35	02/08/18	REVISION		
36	36	02/08/18	REVISION		
37	37	02/08/18	REVISION		
38	38	02/08/18	REVISION		
39	39	02/08/18	REVISION		
40	40	02/08/18	REVISION		
41	41	02/08/18	REVISION		
42	42	02/08/18	REVISION		
43	43	02/08/18	REVISION		
44	44	02/08/18	REVISION		
45	45	02/08/18	REVISION		
46	46	02/08/18	REVISION		
47	47	02/08/18	REVISION		
48	48	02/08/18	REVISION		
49	49	02/08/18	REVISION		
50	50	02/08/18	REVISION		
51	51	02/08/18	REVISION		
52	52	02/08/18	REVISION		
53	53	02/08/18	REVISION		
54	54	02/08/18	REVISION		
55	55	02/08/18	REVISION		
56	56	02/08/18	REVISION		
57	57	02/08/18	REVISION		
58	58	02/08/18	REVISION		
59	59	02/08/18	REVISION		
60	60	02/08/18	REVISION		
61	61	02/08/18	REVISION		
62	62	02/08/18	REVISION		
63	63	02/08/18	REVISION		
64	64	02/08/18	REVISION		
65	65	02/08/18	REVISION		
66	66	02/08/18	REVISION		
67	67	02/08/18	REVISION		
68	68	02/08/18	REVISION		
69	69	02/08/18	REVISION		
70	70	02/08/18	REVISION		
71	71	02/08/18	REVISION		
72	72	02/08/18	REVISION		
73	73	02/08/18	REVISION		
74	74	02/08/18	REVISION		
75	75	02/08/18	REVISION		
76	76	02/08/18	REVISION		
77	77	02/08/18	REVISION		
78	78	02/08/18	REVISION		
79	79	02/08/18	REVISION		
80	80	02/08/18	REVISION		
81	81	02/08/18	REVISION		
82	82	02/08/18	REVISION		
83	83	02/08/18	REVISION		
84	84	02/08/18	REVISION		
85	85	02/08/18	REVISION		
86	86	02/08/18	REVISION		
87	87	02/08/18	REVISION		
88	88	02/08/18	REVISION		
89	89	02/08/18	REVISION		
90	90	02/08/18	REVISION		
91	91	02/08/18	REVISION		
92	92	02/08/18	REVISION		
93	93	02/08/18	REVISION		
94	94	02/08/18	REVISION		
95	95	02/08/18	REVISION		
96	96	02/08/18	REVISION		
97	97	02/08/18	REVISION		
98	98	02/08/18	REVISION		
99	99	02/08/18	REVISION		
100	100	02/08/18	REVISION		



ITEM NO.	QUANTITY	PART NUMBER	DESCRIPTION	REV
1	2	S2500-460-S2-V240	ROTARY VANE VACUUM PUMP SYSTEM, 25 HP DUPLEX STACK MOUNTED	
2	4	A-12000-S4	3" NPT VACUUM INLET	
3	4	A-12000-S4	3" NPT VACUUM OUTLET	
4	2	A-12000-S4	3" NPT VACUUM INLET	
5	4	A-12000-S4	3" NPT VACUUM OUTLET	
6	4	A-12000-S4	3" NPT VACUUM INLET	
7	4	A-12000-S4	3" NPT VACUUM OUTLET	
8	4	A-12000-S4	3" NPT VACUUM INLET	
9	4	A-12000-S4	3" NPT VACUUM OUTLET	
10	4	A-12000-S4	3" NPT VACUUM INLET	
11	4	A-12000-S4	3" NPT VACUUM OUTLET	
12	4	A-12000-S4	3" NPT VACUUM INLET	
13	4	A-12000-S4	3" NPT VACUUM OUTLET	
14	4	A-12000-S4	3" NPT VACUUM INLET	
15	4	A-12000-S4	3" NPT VACUUM OUTLET	
16	4	A-12000-S4	3" NPT VACUUM INLET	
17	4	A-12000-S4	3" NPT VACUUM OUTLET	
18	4	A-12000-S4	3" NPT VACUUM INLET	
19	4	A-12000-S4	3" NPT VACUUM OUTLET	
20	4	A-12000-S4	3" NPT VACUUM INLET	
21	4	A-12000-S4	3" NPT VACUUM OUTLET	
22	4	A-12000-S4	3" NPT VACUUM INLET	
23	4	A-12000-S4	3" NPT VACUUM OUTLET	
24	4	A-12000-S4	3" NPT VACUUM INLET	
25	4	A-12000-S4	3" NPT VACUUM OUTLET	
26	4	A-12000-S4	3" NPT VACUUM INLET	
27	4	A-12000-S4	3" NPT VACUUM OUTLET	
28	4	A-12000-S4	3" NPT VACUUM INLET	
29	4	A-12000-S4	3" NPT VACUUM OUTLET	
30	4	A-12000-S4	3" NPT VACUUM INLET	
31	4	A-12000-S4	3" NPT VACUUM OUTLET	
32	4	A-12000-S4	3" NPT VACUUM INLET	
33	4	A-12000-S4	3" NPT VACUUM OUTLET	
34	4	A-12000-S4	3" NPT VACUUM INLET	
35	4	A-12000-S4	3" NPT VACUUM OUTLET	
36	4	A-12000-S4	3" NPT VACUUM INLET	
37	4	A-12000-S4	3" NPT VACUUM OUTLET	
38	4	A-12000-S4	3" NPT VACUUM INLET	
39	4	A-12000-S4	3" NPT VACUUM OUTLET	
40	4	A-12000-S4	3" NPT VACUUM INLET	
41	4	A-12000-S4	3" NPT VACUUM OUTLET	
42	4	A-12000-S4	3" NPT VACUUM INLET	
43	4	A-12000-S4	3" NPT VACUUM OUTLET	
44	4	A-12000-S4	3" NPT VACUUM INLET	
45	4	A-12000-S4	3" NPT VACUUM OUTLET	
46	4	A-12000-S4	3" NPT VACUUM INLET	
47	4	A-12000-S4	3" NPT VACUUM OUTLET	
48	4	A-12000-S4	3" NPT VACUUM INLET	
49	4	A-12000-S4	3" NPT VACUUM OUTLET	
50	4	A-12000-S4	3" NPT VACUUM INLET	
51	4	A-12000-S4	3" NPT VACUUM OUTLET	
52	4	A-12000-S4	3" NPT VACUUM INLET	
53	4	A-12000-S4	3" NPT VACUUM OUTLET	
54	4	A-12000-S4	3" NPT VACUUM INLET	
55	4	A-12000-S4	3" NPT VACUUM OUTLET	
56	4	A-12000-S4	3" NPT VACUUM INLET	
57	4	A-12000-S4	3" NPT VACUUM OUTLET	
58	4	A-12000-S4	3" NPT VACUUM INLET	
59	4	A-12000-S4	3" NPT VACUUM OUTLET	
60	4	A-12000-S4	3" NPT VACUUM INLET	
61	4	A-12000-S4	3" NPT VACUUM OUTLET	
62	4	A-12000-S4	3" NPT VACUUM INLET	
63	4	A-12000-S4	3" NPT VACUUM OUTLET	
64	4	A-12000-S4	3" NPT VACUUM INLET	
65	4	A-12000-S4	3" NPT VACUUM OUTLET	
66	4	A-12000-S4	3" NPT VACUUM INLET	
67	4	A-12000-S4	3" NPT VACUUM OUTLET	
68	4	A-12000-S4	3" NPT VACUUM INLET	
69	4	A-12000-S4	3" NPT VACUUM OUTLET	
70	4	A-12000-S4	3" NPT VACUUM INLET	
71	4	A-12000-S4	3" NPT VACUUM OUTLET	
72	4	A-12000-S4	3" NPT VACUUM INLET	
73	4	A-12000-S4	3" NPT VACUUM OUTLET	
74	4	A-12000-S4	3" NPT VACUUM INLET	
75	4	A-12000-S4	3" NPT VACUUM OUTLET	
76	4	A-12000-S4	3" NPT VACUUM INLET	
77	4	A-12000-S4	3" NPT VACUUM OUTLET	
78	4	A-12000-S4	3" NPT VACUUM INLET	
79	4	A-12000-S4	3" NPT VACUUM OUTLET	
80	4	A-12000-S4	3" NPT VACUUM INLET	
81	4	A-12000-S4	3" NPT VACUUM OUTLET	
82	4	A-12000-S4	3" NPT VACUUM INLET	
83	4	A-12000-S4	3" NPT VACUUM OUTLET	
84	4	A-12000-S4	3" NPT VACUUM INLET	
85	4	A-12000-S4	3" NPT VACUUM OUTLET	
86	4	A-12000-S4	3" NPT VACUUM INLET	
87	4	A-12000-S4	3" NPT VACUUM OUTLET	
88	4	A-12000-S4	3" NPT VACUUM INLET	
89	4	A-12000-S4	3" NPT VACUUM OUTLET	
90	4	A-12000-S4	3" NPT VACUUM INLET	
91	4	A-12000-S4	3" NPT VACUUM OUTLET	
92	4	A-12000-S4	3" NPT VACUUM INLET	
93	4	A-12000-S4	3" NPT VACUUM OUTLET	
94	4	A-12000-S4	3" NPT VACUUM INLET	
95	4	A-12000-S4	3" NPT VACUUM OUTLET	
96	4	A-12000-S4	3" NPT VACUUM INLET	
97	4	A-12000-S4	3" NPT VACUUM OUTLET	
98	4	A-12000-S4	3" NPT VACUUM INLET	
99	4	A-12000-S4	3" NPT VACUUM OUTLET	
100	4	A-12000-S4	3" NPT VACUUM INLET	



REV	NO	DATE	DESCRIPTION	BY	CHK
1	1	02/08/18	INITIAL RELEASE		
2	2	02/08/18	REVISION		
3	3	02/08/18	REVISION		
4	4	02/08/18	REVISION		
5	5	02/08/18	REVISION		
6	6	02/08/18	REVISION		
7	7	02/08/18	REVISION		
8	8	02/08/18	REVISION		
9	9	02/08/18	REVISION		
10	10	02/08/18	REVISION		
11	11	02/08/18	REVISION		
12	12	02/08/18	REVISION		
13	13	02/08/18	REVISION		
14	14	02/08/18	REVISION		
15	15	02/08/18	REVISION		
16	16	02/08/18	REVISION		
17	17	02/08/18	REVISION		
18	18	02/08/18	REVISION		
19	19	02/08/18	REVISION		
20	20	02/08/18	REVISION		
21	21	02/08/18	REVISION		
22	22	02/08/18	REVISION		
23	23	02/08/18	REVISION		