

# S300L-T2-V80 Rotary Vane Medical Vacuum System

System is NFPA compliant and has modular construction and interconnecting piping.

## PUMP MODULE

Oil sealed rotary vane vacuum pump with NEMA motor. Each pump module is equipped with an inlet filter, check valve, pump isolation valve, and temperature switch.

## SYSTEM CONTROLS

The UL listed electrical control panel features a high-definition color touch screen that can be set up externally without the use of toggle switches. The panel displays multiple conditions, including pump running status, elapsed hours, vacuum level, and audio/visual alarms.

Standard features include lag alarm, automatic pump alternation, adjustable minimum run timer, adjustable vacuum settings, adjustable screen brightness, alarm history registry, and data logging. The panel has standard dry contacts and Modbus interface with building management systems. Ethernet and BACnet are available as options. The panel's maintenance menu includes service items and maintenance warnings, and it is programmed for both English and Spanish languages.

## VACUUM RECEIVER

Constructed to ASME standards and rated for full vacuum. Equipped with valved bypass, high visibility vacuum gauge, source isolation valve, and a manual drain valve. Mounting pads and flex connectors supplied for field installation.

## KEY OPTIONS

Variable Speed Drive Electrical Panel  
Configurable for Lab or Industrial Applications  
Gas Purge System for Lab use

<b>Configuration</b>	Duplex Tank Mount
<b>System Capacity*</b>	11.3 SCFM @ 19" Hg. 60 Hz. 9.4 SCFM @ 19" Hg. 50 Hz.
<b>Horsepower (Each Pump)</b>	2 HP
<b>Horsepower (Total System)</b>	4 HP
<b>Available Voltage</b>	208/230/460 v. 3 phase 60 Hz. 380 v. 3 phase 50 Hz. Contact Factory for other voltages
<b>Full Load Amps 3 ph.</b>	208 volts: 16.2 230 volts: 14.7 380 volts: 9 460 volts: 7.4
<b>Tank Size</b>	80 gallon vertical
<b>Bacterial Filter Bank (option)</b>	BOM-MED FB-125



Click here for pump specifications  
and industry-leading parts support

\*System capacity is stated with one pump in reserve per NFPA. Capacity based on operation at sea level.  
For higher altitude, contact factory for adjusted capacity.

SYSTEM MODEL NO.	PART NO.	HP EACH	SCHWABACH 8" PUMP JACK	SCHWABACH 8" PUMP JACK	DESIGN CAPACITY (GPM @ 10" H <sub>2</sub> O)	RECEIVER SIZE (GALLONS)	PUMP INLET NPT	ESTIMATED SYSTEM WEIGHT (LBS.)
S300L-T2V	S300L-440-T2-V80	2.0	11.3/30.0	4.3/21.4	11.3	80	1-1/4"	450

SPACE ALLOWANCE FOR MAINTENANCE = 3 FT ON ALL SIDES. MORE SPACE IS REQUIRED FOR THE OPENING OF LARGER PANEL DOORS.

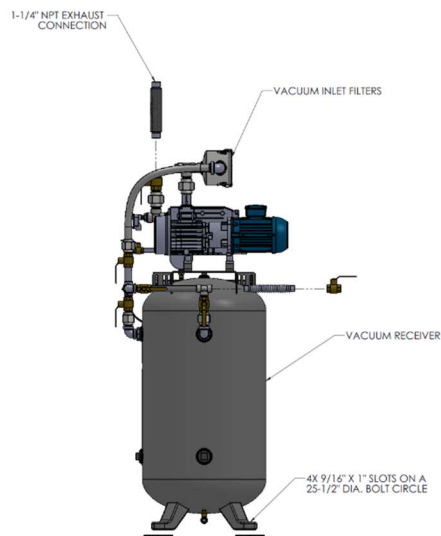
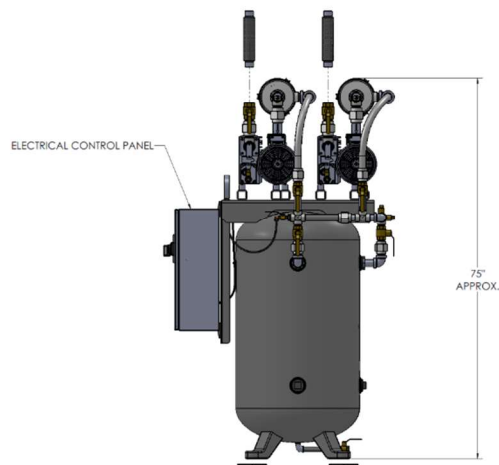
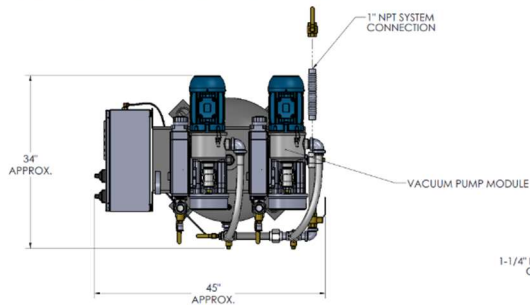
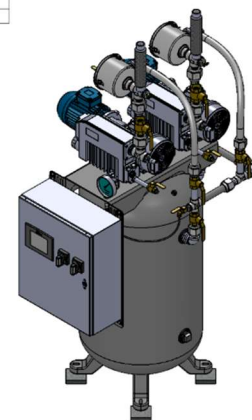


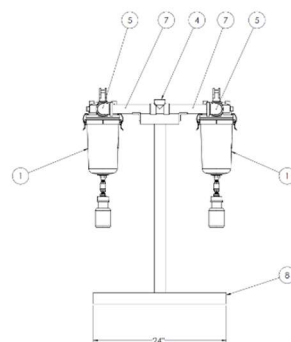
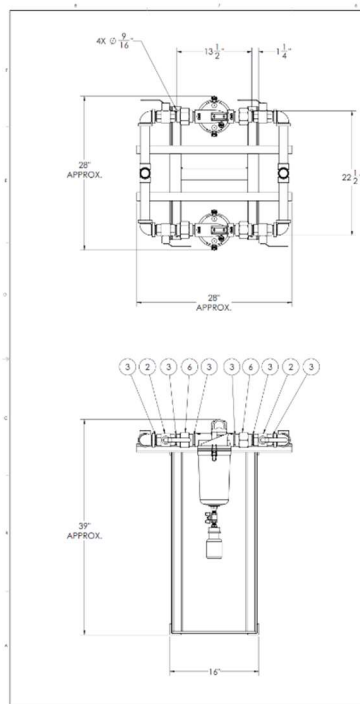
TABLE 1

SYSTEMS LISTED ARE 460V. IF ANOTHER VOLTAGE IS REQUIRED, USE THE FOLLOWING PART NUMBERS.

VOLTAGE	SYSTEM P/N	PUMP MODULES	TRIP MODULE P/N
208-460-3	S300L-208-T2-V80	100-0201	214337
230-460-3	S300L-230-T2-V80	100-0201	214337
380-50-3	S300L-380-T2-V80	100-0201	214337



REV.	DATE	INITIALS	RELEASE	DESCRIPTION	P/N
1	02/2023			REVISION 1.0	
2	02/2023			REVISION 2.0	
3	02/2023			REVISION 3.0	
4	02/2023			REVISION 4.0	
5	02/2023			REVISION 5.0	
6	02/2023			REVISION 6.0	
7	02/2023			REVISION 7.0	
8	02/2023			REVISION 8.0	
9	02/2023			REVISION 9.0	
10	02/2023			REVISION 10.0	
11	02/2023			REVISION 11.0	
12	02/2023			REVISION 12.0	
13	02/2023			REVISION 13.0	
14	02/2023			REVISION 14.0	
15	02/2023			REVISION 15.0	
16	02/2023			REVISION 16.0	
17	02/2023			REVISION 17.0	
18	02/2023			REVISION 18.0	
19	02/2023			REVISION 19.0	
20	02/2023			REVISION 20.0	
21	02/2023			REVISION 21.0	
22	02/2023			REVISION 22.0	
23	02/2023			REVISION 23.0	
24	02/2023			REVISION 24.0	
25	02/2023			REVISION 25.0	
26	02/2023			REVISION 26.0	
27	02/2023			REVISION 27.0	
28	02/2023			REVISION 28.0	
29	02/2023			REVISION 29.0	
30	02/2023			REVISION 30.0	
31	02/2023			REVISION 31.0	
32	02/2023			REVISION 32.0	
33	02/2023			REVISION 33.0	
34	02/2023			REVISION 34.0	
35	02/2023			REVISION 35.0	
36	02/2023			REVISION 36.0	
37	02/2023			REVISION 37.0	
38	02/2023			REVISION 38.0	
39	02/2023			REVISION 39.0	
40	02/2023			REVISION 40.0	
41	02/2023			REVISION 41.0	
42	02/2023			REVISION 42.0	
43	02/2023			REVISION 43.0	
44	02/2023			REVISION 44.0	
45	02/2023			REVISION 45.0	
46	02/2023			REVISION 46.0	
47	02/2023			REVISION 47.0	
48	02/2023			REVISION 48.0	
49	02/2023			REVISION 49.0	
50	02/2023			REVISION 50.0	
51	02/2023			REVISION 51.0	
52	02/2023			REVISION 52.0	
53	02/2023			REVISION 53.0	
54	02/2023			REVISION 54.0	
55	02/2023			REVISION 55.0	
56	02/2023			REVISION 56.0	
57	02/2023			REVISION 57.0	
58	02/2023			REVISION 58.0	
59	02/2023			REVISION 59.0	
60	02/2023			REVISION 60.0	
61	02/2023			REVISION 61.0	
62	02/2023			REVISION 62.0	
63	02/2023			REVISION 63.0	
64	02/2023			REVISION 64.0	
65	02/2023			REVISION 65.0	
66	02/2023			REVISION 66.0	
67	02/2023			REVISION 67.0	
68	02/2023			REVISION 68.0	
69	02/2023			REVISION 69.0	
70	02/2023			REVISION 70.0	
71	02/2023			REVISION 71.0	
72	02/2023			REVISION 72.0	
73	02/2023			REVISION 73.0	
74	02/2023			REVISION 74.0	
75	02/2023			REVISION 75.0	
76	02/2023			REVISION 76.0	
77	02/2023			REVISION 77.0	
78	02/2023			REVISION 78.0	
79	02/2023			REVISION 79.0	
80	02/2023			REVISION 80.0	
81	02/2023			REVISION 81.0	
82	02/2023			REVISION 82.0	
83	02/2023			REVISION 83.0	
84	02/2023			REVISION 84.0	
85	02/2023			REVISION 85.0	
86	02/2023			REVISION 86.0	
87	02/2023			REVISION 87.0	
88	02/2023			REVISION 88.0	
89	02/2023			REVISION 89.0	
90	02/2023			REVISION 90.0	
91	02/2023			REVISION 91.0	
92	02/2023			REVISION 92.0	
93	02/2023			REVISION 93.0	
94	02/2023			REVISION 94.0	
95	02/2023			REVISION 95.0	
96	02/2023			REVISION 96.0	
97	02/2023			REVISION 97.0	
98	02/2023			REVISION 98.0	
99	02/2023			REVISION 99.0	
100	02/2023			REVISION 100.0	



REV.	QTY.	PART NUMBER	DESCRIPTION	ASST.
1	2	20000	INLET FILTER, MEDICAL VACUUM 1/4" NPT	
2	4	24000	1/4" NPT SOURCE ISOLATION VALVE	
3	12	A-12000	1/4" NPT CROSS NPT	
4	2	A-12000	1/4" NPT CROSS NPT	
5	4	A-12000	1/4" NPT ELBOW	
6	4	A-12000	1/4" NPT ELBOW	
7	4	A-12000	1/4" NPT SCH 40 GALVANIZED PIPE (8' LONG)	
8	1	B-12000	WELDED BASE, MEDICAL VACUUM 1/4" NPT	

REV.	DATE	INITIALS	RELEASE	DESCRIPTION	P/N
1	02/2023			REVISION 1.0	
2	02/2023			REVISION 2.0	
3	02/2023			REVISION 3.0	
4	02/2023			REVISION 4.0	
5	02/2023			REVISION 5.0	
6	02/2023			REVISION 6.0	
7	02/2023			REVISION 7.0	
8	02/2023			REVISION 8.0	
9	02/2023			REVISION 9.0	
10	02/2023			REVISION 10.0	
11	02/2023			REVISION 11.0	
12	02/2023			REVISION 12.0	
13	02/2023			REVISION 13.0	
14	02/2023			REVISION 14.0	
15	02/2023			REVISION 15.0	
16	02/2023			REVISION 16.0	
17	02/2023			REVISION 17.0	
18	02/2023			REVISION 18.0	
19	02/2023			REVISION 19.0	
20	02/2023			REVISION 20.0	
21	02/2023			REVISION 21.0	
22	02/2023			REVISION 22.0	
23	02/2023			REVISION 23.0	
24	02/2023			REVISION 24.0	
25	02/2023			REVISION 25.0	
26	02/2023			REVISION 26.0	
27	02/2023			REVISION 27.0	
28	02/2023			REVISION 28.0	
29	02/2023			REVISION 29.0	
30	02/2023			REVISION 30.0	
31	02/2023			REVISION 31.0	
32	02/2023			REVISION 32.0	
33	02/2023			REVISION 33.0	
34	02/2023			REVISION 34.0	
35	02/2023			REVISION 35.0	
36	02/2023			REVISION 36.0	
37	02/2023			REVISION 37.0	
38	02/2023			REVISION 38.0	
39	02/2023			REVISION 39.0	
40	02/2023			REVISION 40.0	
41	02/2023			REVISION 41.0	
42	02/2023			REVISION 42.0	
43	02/2023			REVISION 43.0	
44	02/2023			REVISION 44.0	
45	02/2023			REVISION 45.0	
46	02/2023			REVISION 46.0	
47	02/2023			REVISION 47.0	
48	02/2023			REVISION 48.0	
49	02/2023			REVISION 49.0	
50	02/2023			REVISION 50.0	
51	02/2023			REVISION 51.0	
52	02/2023			REVISION 52.0	
53	02/2023			REVISION 53.0	
54	02/2023			REVISION 54.0	
55	02/2023			REVISION 55.0	
56	02/2023			REVISION 56.0	
57	02/2023			REVISION 57.0	
58	02/2023			REVISION 58.0	
59	02/2023			REVISION 59.0	
60	02/2023			REVISION 60.0	
61	02/2023			REVISION 61.0	
62	02/2023			REVISION 62.0	
63	02/2023			REVISION 63.0	
64	02/2023			REVISION 64.0	
65	02/2023			REVISION 65.0	
66	02/2023			REVISION 66.0	
67	02/2023			REVISION 67.0	
68	02/2023			REVISION 68.0	
69	02/2023			REVISION 69.0	
70	02/2023			REVISION 70.0	
71	02/2023			REVISION 71.0	
72	02/2023			REVISION 72.0	
73	02/2023			REVISION 73.0	
74	02/2023			REVISION 74.0	
75	02/2023			REVISION 75.0	
76	02/2023			REVISION 76.0	
77	02/2023			REVISION 77.0	
78	02/2023			REVISION 78.0	
79	02/2023			REVISION 79.0	
80	02/2023			REVISION 80.0	
81	02/2023			REVISION 81.0	
82	02/2023			REVISION 82.0	
83	02/2023			REVISION 83.0	
84	02/2023			REVISION 84.0	
85	02/2023			REVISION 85.0	
86	02/2023			REVISION 86.0	
87	02/2023			REVISION 87.0	
88	02/2023			REVISION 88.0	
89	02/2023			REVISION 89.0	
90	02/2023			REVISION 90.0	
91	02/2023			REVISION 91.0	
92	02/2023			REVISION 92.0	
93	02/2023			REVISION 93.0	
94	02/2023			REVISION 94.0	
95	02/2023			REVISION 95.0	
96	02/2023			REVISION 96.0	
97	02/2023			REVISION 97.0	
98	02/2023			REVISION 98.0	
99	02/2023			REVISION 99.0	
100	02/2023			REVISION 100.0	