

SC1500-S4-V240 Claw Medical Vacuum System

System is NFPA compliant and has modular construction and interconnecting piping.

PUMP MODULE

Oil-less rotary claw air cooled vacuum pump with NEMA motor. Each pump module is equipped with an inlet filter, check valve, pump isolation valve, internal discharge silencer, and temperature switch.

SYSTEM CONTROLS

The UL listed soft start electrical control panel features a high-definition color touch screen that can be set up externally without the use of toggle switches. The panel displays multiple conditions, including pump running status, elapsed hours, vacuum level, and audio/visual alarms.

Standard features include lag alarm, automatic pump alternation, adjustable minimum run timer, adjustable vacuum settings, adjustable screen brightness, alarm history registry, and data logging. The panel has standard dry contacts and Modbus interface with building management systems. Ethernet and BACnet are available as options. The panel's maintenance menu includes service items and maintenance warnings, and it is programmed for both English and Spanish languages.

VACUUM RECEIVER

Constructed to ASME standards and rated for full vacuum. Equipped with valved bypass, high visibility vacuum gauge, source isolation valve, and a manual drain valve. Mounting pads and flex connectors supplied for field installation.

KEY OPTIONS

Variable Speed Drive Electrical Panel
O2 Assured Oil for gearbox
Configurable for Lab or Industrial Applications
Gas Purge System for Lab use

Configuration	Quadruplex Stack Mount
System Capacity*	384 SCFM @ 19" Hg. 60 Hz. 320 SCFM @ 19" Hg. 50 Hz.
Horsepower (Each Pump)	15 HP
Horsepower (Total System)	60 HP
Available Voltage	208/230/460 v. 3 phase 60 Hz. 380 v. 3 phase 50 Hz. Contact Factory for other voltages
Full Load Amps 3 ph.	208 volts: 187.8 230 volts: 170.8 380 volts: 101.7 460 volts: 85.5
Tank Size	240 gallon vertical
Medical Filter Bank (option)	BOM-MED FB-3X2



Click here for pump specifications
and industry-leading parts support.

*System capacity is stated with one pump in reserve per NFPA. Capacity based on operation at sea level. For higher altitude, contact factory for adjusted capacity.

SYSTEM MODEL NO.	PART NO.	HP EACH	SCF/24 HRS @ 19" Hg EACH	SCF/24 HRS @ 22" Hg EACH	DESIGN CAPACITY (19" Hg EACH)	RECEIVER SIZE (GALLONS)	PUMP INLET NPT	ESTIMATED SYSTEM WEIGHT (LB)	NOISE LEVEL (dBA)
C1500-S14	SC1500-460-S4-V240	15	128 / 350	188 / 530	384	240	2"	6000	76

SPACE ALLOWANCE FOR MAINTENANCE = 3 FT ON ALL SIDES. MORE SPACE IS REQUIRED FOR THE OPENING OF LARGER PANEL DOORS.

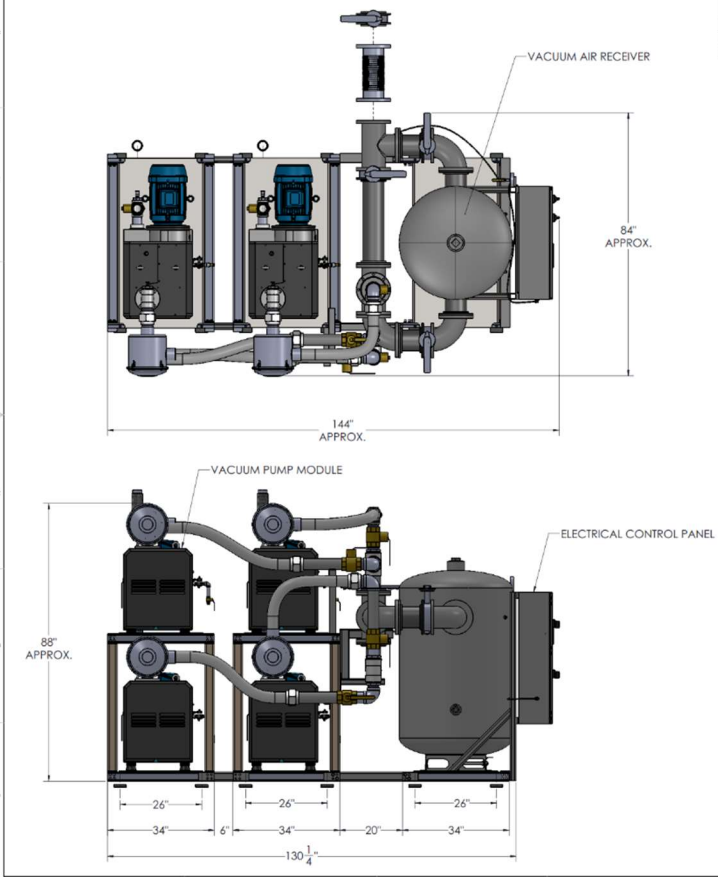
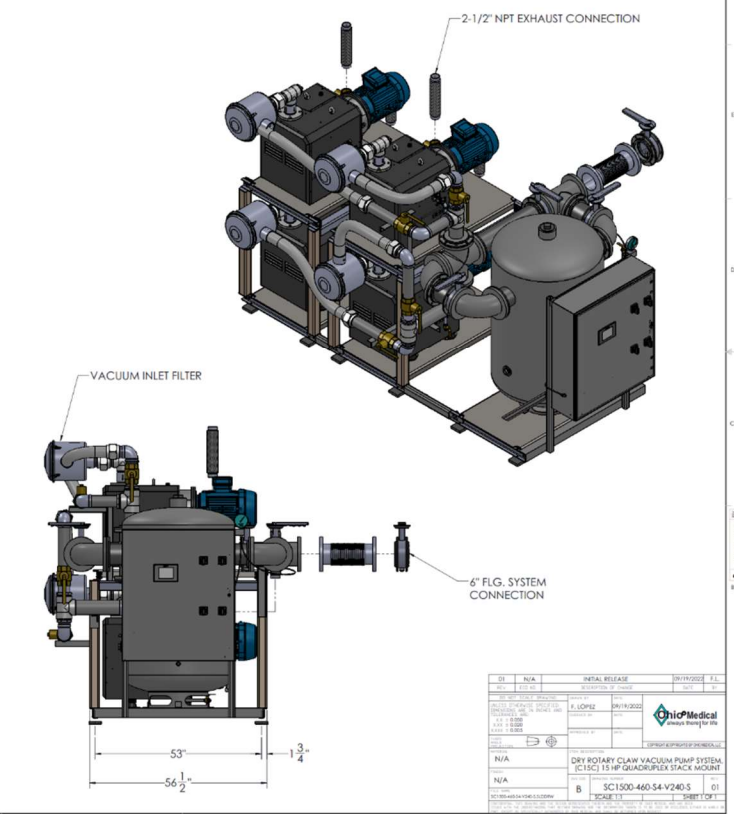


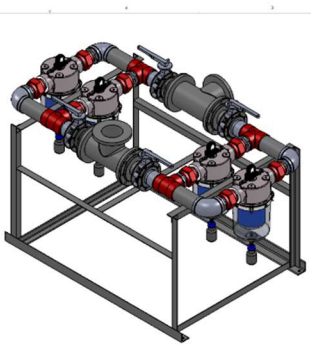
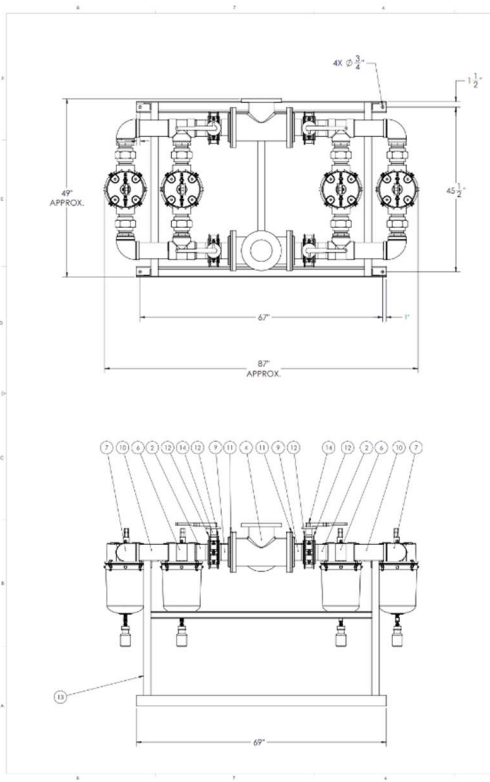
TABLE 1

SYSTEM LISTED ARE 460V. IF ANOTHER VOLTAGE IS REQUIRED, USE THE FOLLOWING PART NUMBERS.

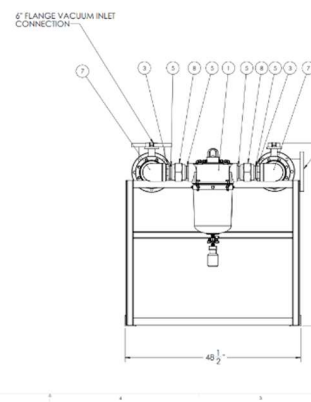
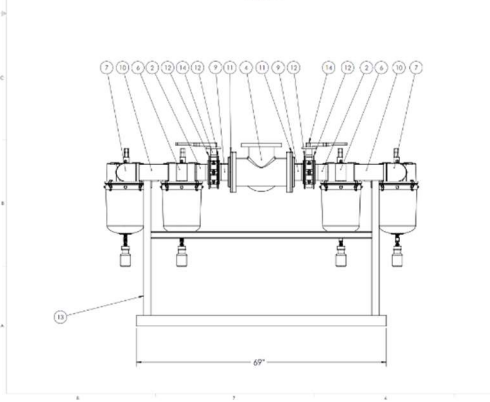
VOLTAGE	SYSTEM P/N	PUMP MODULE P/N	MOTOR OVERLOAD PROTECTION
208-460-3	SC1500-208-S4-V240	100-0135	214540
230-460-3	SC1500-230-S4-V240	100-0135	214540
380-50-3	SC1500-380-S4-V240	100-0135	214557



REV	DESCRIPTION	DATE	BY	CHKD
1	INITIAL RELEASE	01/11/2020	F. LOPEZ	
2	REVISION 1	01/11/2020	F. LOPEZ	
3	REVISION 2	01/11/2020	F. LOPEZ	
4	REVISION 3	01/11/2020	F. LOPEZ	
5	REVISION 4	01/11/2020	F. LOPEZ	
6	REVISION 5	01/11/2020	F. LOPEZ	
7	REVISION 6	01/11/2020	F. LOPEZ	
8	REVISION 7	01/11/2020	F. LOPEZ	
9	REVISION 8	01/11/2020	F. LOPEZ	
10	REVISION 9	01/11/2020	F. LOPEZ	
11	REVISION 10	01/11/2020	F. LOPEZ	
12	REVISION 11	01/11/2020	F. LOPEZ	
13	REVISION 12	01/11/2020	F. LOPEZ	
14	REVISION 13	01/11/2020	F. LOPEZ	
15	REVISION 14	01/11/2020	F. LOPEZ	
16	REVISION 15	01/11/2020	F. LOPEZ	
17	REVISION 16	01/11/2020	F. LOPEZ	
18	REVISION 17	01/11/2020	F. LOPEZ	
19	REVISION 18	01/11/2020	F. LOPEZ	
20	REVISION 19	01/11/2020	F. LOPEZ	
21	REVISION 20	01/11/2020	F. LOPEZ	
22	REVISION 21	01/11/2020	F. LOPEZ	
23	REVISION 22	01/11/2020	F. LOPEZ	
24	REVISION 23	01/11/2020	F. LOPEZ	
25	REVISION 24	01/11/2020	F. LOPEZ	
26	REVISION 25	01/11/2020	F. LOPEZ	
27	REVISION 26	01/11/2020	F. LOPEZ	
28	REVISION 27	01/11/2020	F. LOPEZ	
29	REVISION 28	01/11/2020	F. LOPEZ	
30	REVISION 29	01/11/2020	F. LOPEZ	
31	REVISION 30	01/11/2020	F. LOPEZ	
32	REVISION 31	01/11/2020	F. LOPEZ	
33	REVISION 32	01/11/2020	F. LOPEZ	
34	REVISION 33	01/11/2020	F. LOPEZ	
35	REVISION 34	01/11/2020	F. LOPEZ	
36	REVISION 35	01/11/2020	F. LOPEZ	
37	REVISION 36	01/11/2020	F. LOPEZ	
38	REVISION 37	01/11/2020	F. LOPEZ	
39	REVISION 38	01/11/2020	F. LOPEZ	
40	REVISION 39	01/11/2020	F. LOPEZ	
41	REVISION 40	01/11/2020	F. LOPEZ	
42	REVISION 41	01/11/2020	F. LOPEZ	
43	REVISION 42	01/11/2020	F. LOPEZ	
44	REVISION 43	01/11/2020	F. LOPEZ	
45	REVISION 44	01/11/2020	F. LOPEZ	
46	REVISION 45	01/11/2020	F. LOPEZ	
47	REVISION 46	01/11/2020	F. LOPEZ	
48	REVISION 47	01/11/2020	F. LOPEZ	
49	REVISION 48	01/11/2020	F. LOPEZ	
50	REVISION 49	01/11/2020	F. LOPEZ	
51	REVISION 50	01/11/2020	F. LOPEZ	
52	REVISION 51	01/11/2020	F. LOPEZ	
53	REVISION 52	01/11/2020	F. LOPEZ	
54	REVISION 53	01/11/2020	F. LOPEZ	
55	REVISION 54	01/11/2020	F. LOPEZ	
56	REVISION 55	01/11/2020	F. LOPEZ	
57	REVISION 56	01/11/2020	F. LOPEZ	
58	REVISION 57	01/11/2020	F. LOPEZ	
59	REVISION 58	01/11/2020	F. LOPEZ	
60	REVISION 59	01/11/2020	F. LOPEZ	
61	REVISION 60	01/11/2020	F. LOPEZ	
62	REVISION 61	01/11/2020	F. LOPEZ	
63	REVISION 62	01/11/2020	F. LOPEZ	
64	REVISION 63	01/11/2020	F. LOPEZ	
65	REVISION 64	01/11/2020	F. LOPEZ	
66	REVISION 65	01/11/2020	F. LOPEZ	
67	REVISION 66	01/11/2020	F. LOPEZ	
68	REVISION 67	01/11/2020	F. LOPEZ	
69	REVISION 68	01/11/2020	F. LOPEZ	
70	REVISION 69	01/11/2020	F. LOPEZ	
71	REVISION 70	01/11/2020	F. LOPEZ	
72	REVISION 71	01/11/2020	F. LOPEZ	
73	REVISION 72	01/11/2020	F. LOPEZ	
74	REVISION 73	01/11/2020	F. LOPEZ	
75	REVISION 74	01/11/2020	F. LOPEZ	
76	REVISION 75	01/11/2020	F. LOPEZ	
77	REVISION 76	01/11/2020	F. LOPEZ	
78	REVISION 77	01/11/2020	F. LOPEZ	
79	REVISION 78	01/11/2020	F. LOPEZ	
80	REVISION 79	01/11/2020	F. LOPEZ	
81	REVISION 80	01/11/2020	F. LOPEZ	
82	REVISION 81	01/11/2020	F. LOPEZ	
83	REVISION 82	01/11/2020	F. LOPEZ	
84	REVISION 83	01/11/2020	F. LOPEZ	
85	REVISION 84	01/11/2020	F. LOPEZ	
86	REVISION 85	01/11/2020	F. LOPEZ	
87	REVISION 86	01/11/2020	F. LOPEZ	
88	REVISION 87	01/11/2020	F. LOPEZ	
89	REVISION 88	01/11/2020	F. LOPEZ	
90	REVISION 89	01/11/2020	F. LOPEZ	
91	REVISION 90	01/11/2020	F. LOPEZ	
92	REVISION 91	01/11/2020	F. LOPEZ	
93	REVISION 92	01/11/2020	F. LOPEZ	
94	REVISION 93	01/11/2020	F. LOPEZ	
95	REVISION 94	01/11/2020	F. LOPEZ	
96	REVISION 95	01/11/2020	F. LOPEZ	
97	REVISION 96	01/11/2020	F. LOPEZ	
98	REVISION 97	01/11/2020	F. LOPEZ	
99	REVISION 98	01/11/2020	F. LOPEZ	
100	REVISION 99	01/11/2020	F. LOPEZ	



ITEM NO.	QTY	PART NUMBER	DESCRIPTION	REF. NO.
1	4	229113	MEDICAL VACUUM FILTER, 0.2 MICRONS 2" NPT	
2	4	A-12102-41	4 X 2" NPT NIPPLE	
3	6	A-12103-55	4 X 2" NPT BUSHING	
4	2	A-12104-14A	2" NPT TEE	
5	16	A-12105-61	2" NPT CROSS ADAPTER	
6	4	A-12108-13	4" Threaded Tee	
7	4	A-12109-13	4" NPT, 90DEG	
8	8	A-12137-11	WALTON 2"	
9	4	A-1431-9	4" NPT SCH 40 GALVANNEED PIPE (16 LONG)	
10	4	A-1431-9	4" NPT SCH 40 GALVANNEED PIPE (10P LONG)	
11	4	B-1444-15	4" X 4" WELD FLANGE	
12	8	B-14404-9	FLANGE 4"	
13	1	BASE MED	BASE ASSEMBLY FOR DUAL 2" AND ALUM BASE WITH 4 IN CONNECTION	
14	4	BUT-4	BUTTERFLY VALVE, 4"	



6" FLANGE VACUUM OUTLET
CONNECTION

51"
APPROX.

REV	DATE	BY	DESCRIPTION	DATE	CHKD
1	01/11/2020	F. LOPEZ	INITIAL RELEASE		
2	01/11/2020	F. LOPEZ	REVISION 1		
3	01/11/2020	F. LOPEZ	REVISION 2		
4	01/11/2020	F. LOPEZ	REVISION 3		
5	01/11/2020	F. LOPEZ	REVISION 4		
6	01/11/2020	F. LOPEZ	REVISION 5		
7	01/11/2020	F. LOPEZ	REVISION 6		
8	01/11/2020	F. LOPEZ	REVISION 7		
9	01/11/2020	F. LOPEZ	REVISION 8		
10	01/11/2020	F. LOPEZ	REVISION 9		
11	01/11/2020	F. LOPEZ	REVISION 10		
12	01/11/2020	F. LOPEZ	REVISION 11		
13	01/11/2020	F. LOPEZ	REVISION 12		
14	01/11/2020	F. LOPEZ	REVISION 13		
15	01/11/2020	F. LOPEZ	REVISION 14		
16	01/11/2020	F. LOPEZ	REVISION 15		
17	01/11/2020	F. LOPEZ	REVISION 16		
18	01/11/2020	F. LOPEZ	REVISION 17		
19	01/11/2020	F. LOPEZ	REVISION 18		
20	01/11/2020	F. LOPEZ	REVISION 19		
21	01/11/2020	F. LOPEZ	REVISION 20		
22	01/11/2020	F. LOPEZ	REVISION 21		
23	01/11/2020	F. LOPEZ	REVISION 22		
24	01/11/2020	F. LOPEZ	REVISION 23		
25	01/11/2020	F. LOPEZ	REVISION 24		
26	01/11/2020	F. LOPEZ	REVISION 25		
27	01/11/2020	F. LOPEZ	REVISION 26		
28	01/11/2020	F. LOPEZ	REVISION 27		
29	01/11/2020	F. LOPEZ	REVISION 28		
30	01/11/2020	F. LOPEZ	REVISION 29		
31	01/11/2020	F. LOPEZ	REVISION 30		
32	01/11/2020	F. LOPEZ	REVISION 31		
33	01/11/2020	F. LOPEZ	REVISION 32		
34	01/11/2020	F. LOPEZ	REVISION 33		
35	01/11/2020	F. LOPEZ	REVISION 34		
36	01/11/2020	F. LOPEZ	REVISION 35		
37	01/11/2020	F. LOPEZ	REVISION 36		
38	01/11/2020	F. LOPEZ	REVISION 37		
39	01/11/2020	F. LOPEZ	REVISION 38		
40	01/11/2020	F. LOPEZ	REVISION 39		
41	01/11/2020	F. LOPEZ	REVISION 40		
42	01/11/2020	F. LOPEZ	REVISION 41		
43	01/11/2020	F. LOPEZ	REVISION 42		
44	01/11/2020	F. LOPEZ	REVISION 43		
45	01/11/2020	F. LOPEZ	REVISION 44		
46	01/11/2020	F. LOPEZ	REVISION 45		
47	01/11/2020	F. LOPEZ	REVISION 46		
48	01/11/2020	F. LOPEZ	REVISION 47		
49	01/11/2020	F. LOPEZ	REVISION 48		
50	01/11/2020	F. LOPEZ	REVISION 49		
51	01/11/2020	F. LOPEZ	REVISION 50		
52	01/11/2020	F. LOPEZ	REVISION 51		
53	01/11/2020	F. LOPEZ	REVISION 52		
54	01/11/2020	F. LOPEZ	REVISION 53		
55	01/11/2020	F. LOPEZ	REVISION 54		
56	01/11/2020	F. LOPEZ	REVISION 55		
57	01/11/2020	F. LOPEZ	REVISION 56		
58	01/11/2020	F. LOPEZ	REVISION 57		
59	01/11/2020	F. LOPEZ	REVISION 58		
60	01/11/2020	F. LOPEZ	REVISION 59		
61	01/11/2020	F. LOPEZ	REVISION 60		
62	01/11/2020	F. LOPEZ	REVISION 61		
63	01/11/2020	F. LOPEZ	REVISION 62		
64	01/11/2020	F. LOPEZ	REVISION 63		
65	01/11/2020	F. LOPEZ	REVISION 64		
66	01/11/2020	F. LOPEZ	REVISION 65		
67	01/11/2020	F. LOPEZ	REVISION 66		
68	01/11/2020	F. LOPEZ	REVISION 67		
69	01/11/2020	F. LOPEZ	REVISION 68		
70	01/11/2020	F. LOPEZ	REVISION 69		
71	01/11/2020	F. LOPEZ	REVISION 70		
72	01/11/2020	F. LOPEZ	REVISION 71		
73	01/11/2020	F. LOPEZ	REVISION 72		
74	01/11/2020	F. LOPEZ	REVISION 73		
75	01/11/2020	F. LOPEZ	REVISION 74		
76	01/11/2020	F. LOPEZ	REVISION 75		
77	01/11/2020	F. LOPEZ	REVISION 76		
78	01/11/2020	F. LOPEZ	REVISION 77		
79	01/11/2020	F. LOPEZ	REVISION 78		
80	01/11/2020	F. LOPEZ	REVISION 79		
81	01/11/2020	F. LOPEZ	REVISION 80		
82	01/11/2020	F. LOPEZ	REVISION 81		
83	01/11/2020	F. LOPEZ	REVISION 82		
84	01/11/2020	F. LOPEZ	REVISION 83		
85	01/11/2020	F. LOPEZ	REVISION 84		
86	01/11/2020	F. LOPEZ	REVISION 85		
87	01/11/2020	F. LOPEZ	REVISION 86		
88	01/11/2020	F. LOPEZ	REVISION 87		
89	01/11/2020	F. LOPEZ	REVISION 88		
90	01/11/2020	F. LOPEZ	REVISION 89		
91	01/11/2020	F. LOPEZ	REVISION 90		
92	01/11/2020	F. LOPEZ	REVISION 91		
93	01/11/2020	F. LOPEZ	REVISION 92		
94	01/11/2020	F. LOPEZ	REVISION 93		
95	01/11/2020	F. LOPEZ	REVISION 94		
96	01/11/2020	F. LOPEZ	REVISION 95		
97	01/11/2020	F. LOPEZ	REVISION 96		
98	01/11/2020	F. LOPEZ	REVISION 97		
99	01/11/2020	F. LOPEZ	REVISION 98		
100	01/11/2020	F. LOPEZ	REVISION 99		
101	01/11/2020	F. LOPEZ	REVISION 100		

1. MEDICAL VACUUM TEST BANK, QUALITY
 2. TEST FILTERS WITH 4 CONNECTIONS
 3. N/A
 4. N/A
 5. N/A
 6. N/A
 7. N/A
 8. N/A
 9. N/A
 10. N/A
 11. N/A
 12. N/A
 13. N/A
 14. N/A
 15. N/A
 16. N/A
 17. N/A
 18. N/A
 19. N/A
 20. N/A
 21. N/A
 22. N/A
 23. N/A
 24. N/A
 25. N/A
 26. N/A
 27. N/A
 28. N/A
 29. N/A
 30. N/A
 31. N/A
 32. N/A
 33. N/A
 34. N/A
 35. N/A
 36. N/A
 37. N/A
 38. N/A
 39. N/A
 40. N/A
 41. N/A
 42. N/A
 43. N/A
 44. N/A
 45. N/A
 46. N/A
 47. N/A
 48. N/A
 49. N/A
 50. N/A
 51. N/A
 52. N/A
 53. N/A
 54. N/A
 55. N/A
 56. N/A
 57. N/A
 58. N/A
 59. N/A
 60. N/A
 61. N/A
 62. N/A
 63. N/A
 64. N/A
 65. N/A
 66. N/A
 67. N/A
 68. N/A
 69. N/A
 70. N/A
 71. N/A
 72. N/A
 73. N/A
 74. N/A
 75. N/A
 76. N/A
 77. N/A
 78. N/A
 79. N/A
 80. N/A
 81. N/A
 82. N/A
 83. N/A
 84. N/A
 85. N/A
 86. N/A
 87. N/A
 88. N/A
 89. N/A
 90. N/A
 91. N/A
 92. N/A
 93. N/A
 94. N/A
 95. N/A
 96. N/A
 97. N/A
 98. N/A
 99. N/A
 100. N/A

BOM-MED FB-3N2
 BOM-MED FB-3N2 (REV. 10/11/2020)