

## SC1500L-S4-V240 Claw Medical Vacuum System

System is NFPA compliant and has modular construction and interconnecting piping.

### PUMP MODULE

Oil-less rotary claw air cooled vacuum pump with NEMA motor. Each pump module is equipped with an inlet filter, check valve, pump isolation valve, internal discharge silencer, and temperature switch.

### SYSTEM CONTROLS

The UL listed soft start electrical control panel features a high-definition color touch screen that can be set up externally without the use of toggle switches. The panel displays multiple conditions, including pump running status, elapsed hours, vacuum level, and audio/visual alarms.

Standard features include lag alarm, automatic pump alternation, adjustable minimum run timer, adjustable vacuum settings, adjustable screen brightness, alarm history registry, and data logging. The panel has standard dry contacts and Modbus interface with building management systems. Ethernet and BACnet are available as options. The panel's maintenance menu includes service items and maintenance warnings, and it is programmed for both English and Spanish languages.

### VACUUM RECEIVER

Constructed to ASME standards and rated for full vacuum. Equipped with valved bypass, high visibility vacuum gauge, source isolation valve, and a manual drain valve. Mounting pads and flex connectors supplied for field installation.

### KEY OPTIONS

Variable Speed Drive Electrical Panel  
O2 Assured Oil for gearbox  
Configurable for Lab or Industrial Applications  
Gas Purge System for Lab use

<b>Configuration</b>	Quadruplex Stack Mount
<b>System Capacity*</b>	285 SCFM @ 19" Hg. 60 Hz. 237.4 SCFM @ 19" Hg. 50 Hz.
<b>Horsepower (Each Pump)</b>	15 HP
<b>Horsepower (Total System)</b>	60 HP
<b>Available Voltage</b>	208/230/460 v. 3 phase 60 Hz. 380 v. 3 phase 50 Hz. Contact Factory for other voltages
<b>Full Load Amps 3 ph.</b>	208 volts: 187.8 230 volts: 170.8 380 volts: 101.7 460 volts: 85.5
<b>Tank Size</b>	240 gallon vertical
<b>Medical Filter Bank (option)</b>	BOM-MED FB-3X2



Click here for pump specifications  
and industry-leading parts support.

\*System capacity is stated with one pump in reserve per NFPA. Capacity based on operation at sea level. For higher altitude, contact factory for adjusted capacity.

SYSTEM MODEL NO.	PART NO.	HP EACH	SCHEMATIC (1/2" EACH)	SCHEMATIC (1/2" EACH)	DESIGN CAPACITY (1/2" EACH)	RECYCLER SIZE (GALLONS)	PUMP INLET HPT	ESTIMATED SYSTEM WEIGHT (LBS)	MOIST LEVEL (SBA)
C1300L-574	SC1300L-460-S4-V240	15	15 / 240	47 / 251	240	240	3"	5300	75

SPACE ALLOWANCE FOR MAINTENANCE = 3 FT ON ALL SIDES. MORE SPACE IS REQUIRED FOR THE OPENING OF LARGER PANEL DOORS.

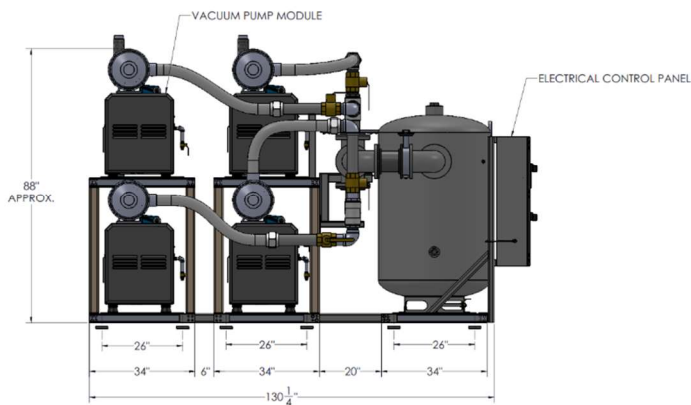
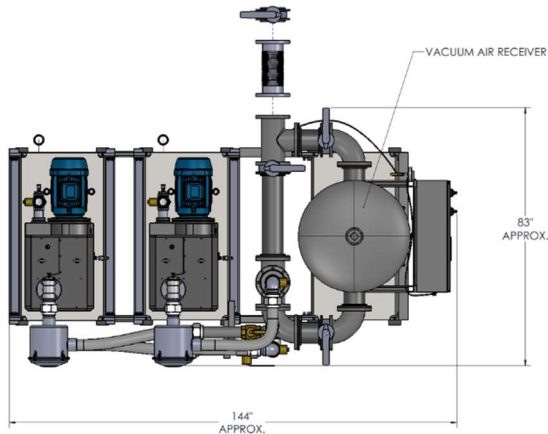
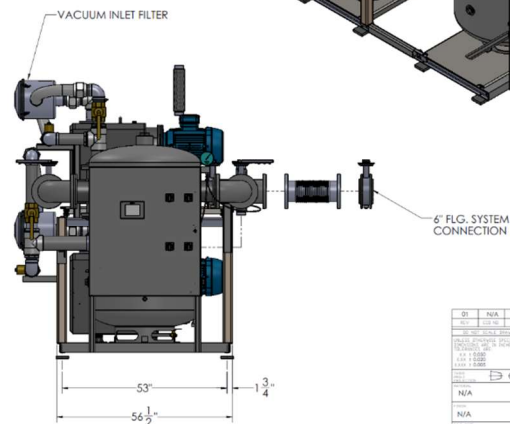
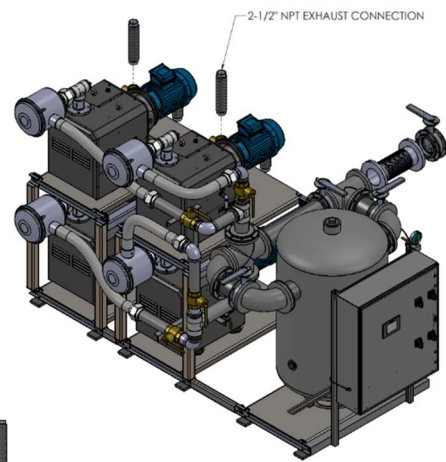
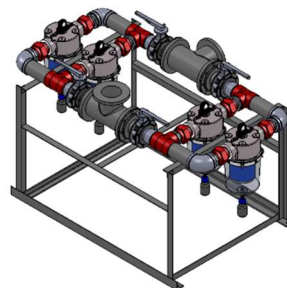
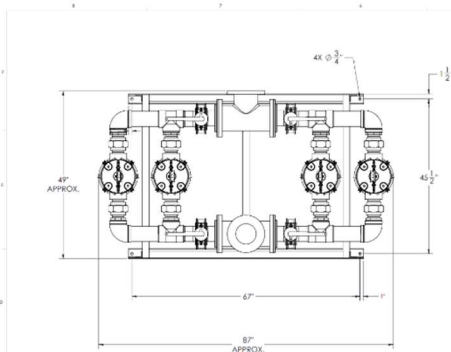


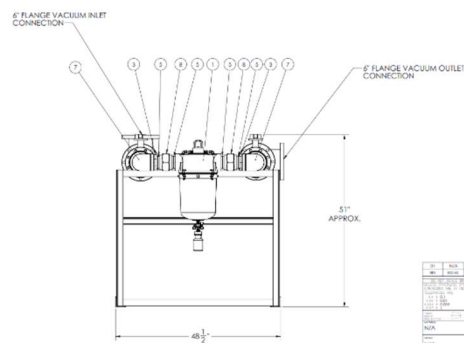
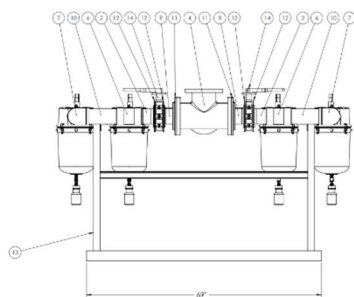
TABLE 1			
SYSTEM LISTED ARE 460V. IF ANOTHER VOLTAGE IS REQUIRED, USE THE FOLLOWING PART NUMBERS.			
VOLTAGE	SYSTEM P/N	PUMP MODULE P/N	MOTOR OVERLOAD PROTECTION
208-460-3	SC1300L-208-S4-V240	100-0134	21-4540
230-460-3	SC1300L-230-S4-V240	100-0134	21-4540
380-50-3	SC1300L-380-S4-V240	100-0134	21-4557



Q1	N/A	INITIAL RELEASE	01/01/2020	F.L.
				
DRY ROTARY CLAW VACUUM PUMP SYSTEM (C1300L) 15 HP QUADRUPLER STACK MOUNT				
N/A				
N/A				
B	SC1300L-460-S4-V240-S			



ITEM NO.	QUANTITY	PART NUMBER	DESCRIPTION	REV
1	4	208013	METAL VACUUM FILTER 0.3 MICRONS 3\"	
2	4	A-1202-40	4\"	
3	8	A-1202-50	4\"	
4	2	A-1204-14N	4\"	
5	16	A-1202-11	2\"	
6	4	A-1202-13	4\"	
7	4	A-1202-13	4\"	
8	8	A-1202-11	2\"	
9	4	A-1202-13	4\"	
10	4	A-1202-13	4\"	
11	4	A-1202-13	4\"	
12	4	A-1202-13	4\"	
13	4	A-1202-13	4\"	
14	4	A-1202-13	4\"	



Q1	N/A	INITIAL RELEASE	01/01/2020	F.L.
				
DRY ROTARY CLAW VACUUM PUMP SYSTEM (C1300L) 15 HP QUADRUPLER STACK MOUNT				
N/A				
N/A				
B	SC1300L-460-S4-V240-S			