

## SC750-S4-V200 Claw Medical Vacuum System

System is NFPA compliant and has modular construction and interconnecting piping.

### PUMP MODULE

Oil-less rotary claw air cooled vacuum pump with NEMA motor. Each pump module is equipped with an inlet filter, check valve, pump isolation valve, internal discharge silencer, and temperature switch.

### SYSTEM CONTROLS

The UL listed soft start electrical control panel features a high-definition color touch screen that can be set up externally without the use of toggle switches. The panel displays multiple conditions, including pump running status, elapsed hours, vacuum level, and audio/visual alarms.

Standard features include lag alarm, automatic pump alternation, adjustable minimum run timer, adjustable vacuum settings, adjustable screen brightness, alarm history registry, and data logging. The panel has standard dry contacts and Modbus interface with building management systems. Ethernet and BACnet are available as options. The panel's maintenance menu includes service items and maintenance warnings, and it is programmed for both English and Spanish languages.

### VACUUM RECEIVER

Constructed to ASME standards and rated for full vacuum. Equipped with valved bypass, high visibility vacuum gauge, source isolation valve, and a manual drain valve. Mounting pads and flex connectors supplied for field installation.

### KEY OPTIONS

Variable Speed Drive Electrical Panel  
O2 Assured Oil for gearbox  
Configurable for Lab or Industrial Applications  
Gas Purge System for Lab use

<b>Configuration</b>	Quadruplex Stack Mount
<b>System Capacity*</b>	195 SCFM @ 19" Hg. 60 Hz. 162.4 SCFM @ 19" Hg. 50 Hz.
<b>Horsepower (Each Pump)</b>	7.5 HP
<b>Horsepower (Total System)</b>	30 HP
<b>Available Voltage</b>	208/230/460 v. 3 phase 60 Hz. 380 v. 3 phase 50 Hz. Contact Factory for other voltages
<b>Full Load Amps 3 ph.</b>	208 volts: 99.8 230 volts: 90.8 380 volts: 54.9 460 volts: 45.5
<b>Tank Size</b>	200 gallon vertical
<b>Medical Filter Bank (option)</b>	BOM-MED FB-3



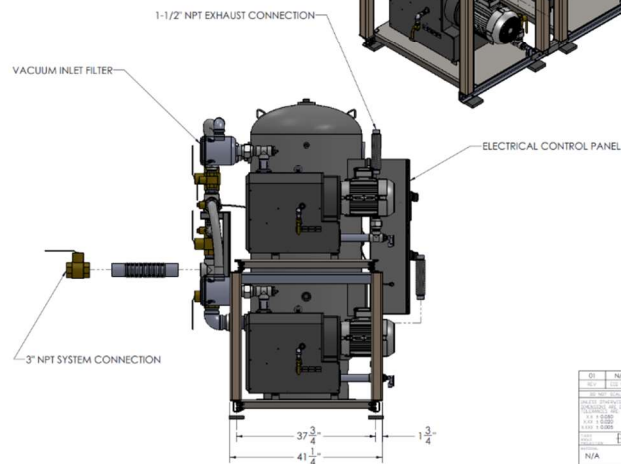
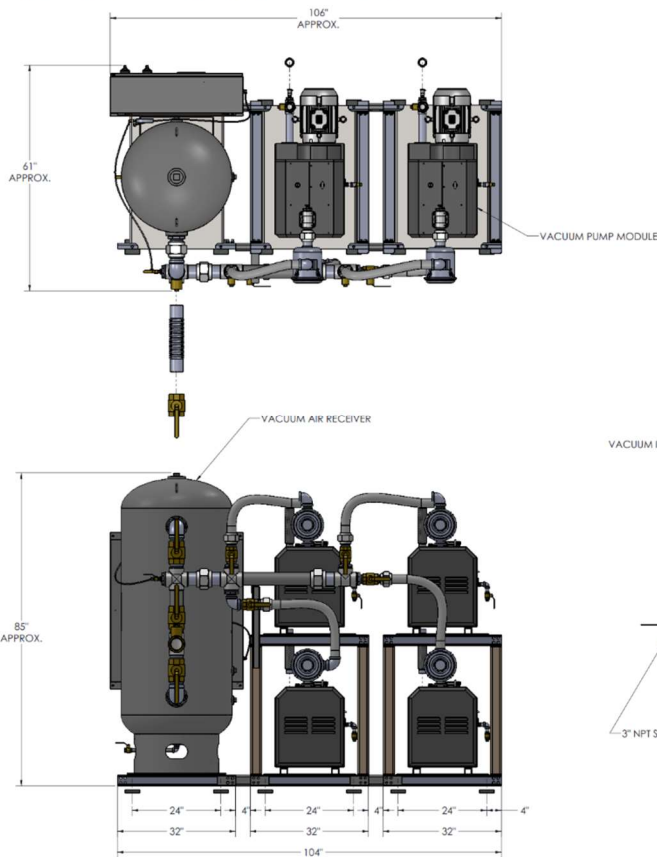
Click here for pump specifications  
and industry-leading parts support.

\*System capacity is stated with one pump in reserve per NFPA. Capacity based on operation at sea level. For higher altitude, contact factory for adjusted capacity.

SYSTEM MODEL NO.	PART NO.	HP EACH	SC-PA/ACPM @ 17" Hg EACH	SC-PA/ACPM @ 25" Hg EACH	DESIGN CAPACITY (81°F Hg EACH)	RECEIVER SIZE (GALLONS)	PUMP INLET NPT	ESTIMATED SYSTEM WEIGHT (LB)	NOISE LEVEL (dBA)
CT558-174	SC750-460-54-V200	7.5	45 / 177	28.3 / 170	185	200	2"	3700	76

TABLE 1			
SYSTEM LISTED ARE 460V. IF ANOTHER VOLTAGE IS REQUIRED, USE THE FOLLOWING PART NUMBERS.			
VOLTAGE	SYSTEM P/N	PUMP MODULE P/N	MOTOR OVERLOAD PROTECTION
208-460-3	SC750-208-54-V200	100-0132	214557
230-460-3	SC750-230-54-V200	100-0132	214557
380-50-3	SC750-380-54-V200	100-0132	214528

SPACE ALLOWANCE FOR MAINTENANCE = 3 FT ON ALL SIDES. MORE SPACE IS REQUIRED FOR THE OPENING OF LARGER PANEL DOORS.



REV	DATE	INITIALS	RELEASE
1	06/10/2021		
2	06/10/2021		
3	06/10/2021		
4	06/10/2021		
5	06/10/2021		
6	06/10/2021		
7	06/10/2021		
8	06/10/2021		
9	06/10/2021		
10	06/10/2021		
11	06/10/2021		
12	06/10/2021		
13	06/10/2021		
14	06/10/2021		
15	06/10/2021		
16	06/10/2021		
17	06/10/2021		
18	06/10/2021		
19	06/10/2021		
20	06/10/2021		
21	06/10/2021		
22	06/10/2021		
23	06/10/2021		
24	06/10/2021		
25	06/10/2021		
26	06/10/2021		
27	06/10/2021		
28	06/10/2021		
29	06/10/2021		
30	06/10/2021		
31	06/10/2021		
32	06/10/2021		
33	06/10/2021		
34	06/10/2021		
35	06/10/2021		
36	06/10/2021		
37	06/10/2021		
38	06/10/2021		
39	06/10/2021		
40	06/10/2021		
41	06/10/2021		
42	06/10/2021		
43	06/10/2021		
44	06/10/2021		
45	06/10/2021		
46	06/10/2021		
47	06/10/2021		
48	06/10/2021		
49	06/10/2021		
50	06/10/2021		
51	06/10/2021		
52	06/10/2021		
53	06/10/2021		
54	06/10/2021		
55	06/10/2021		
56	06/10/2021		
57	06/10/2021		
58	06/10/2021		
59	06/10/2021		
60	06/10/2021		
61	06/10/2021		
62	06/10/2021		
63	06/10/2021		
64	06/10/2021		
65	06/10/2021		
66	06/10/2021		
67	06/10/2021		
68	06/10/2021		
69	06/10/2021		
70	06/10/2021		
71	06/10/2021		
72	06/10/2021		
73	06/10/2021		
74	06/10/2021		
75	06/10/2021		
76	06/10/2021		
77	06/10/2021		
78	06/10/2021		
79	06/10/2021		
80	06/10/2021		
81	06/10/2021		
82	06/10/2021		
83	06/10/2021		
84	06/10/2021		
85	06/10/2021		
86	06/10/2021		
87	06/10/2021		
88	06/10/2021		
89	06/10/2021		
90	06/10/2021		
91	06/10/2021		
92	06/10/2021		
93	06/10/2021		
94	06/10/2021		
95	06/10/2021		
96	06/10/2021		
97	06/10/2021		
98	06/10/2021		
99	06/10/2021		
100	06/10/2021		

