

## SC750-S4-V240 Claw Medical Vacuum System

System is NFPA compliant and has modular construction and interconnecting piping.

### PUMP MODULE

Oil-less rotary claw air cooled vacuum pump with NEMA motor. Each pump module is equipped with an inlet filter, check valve, pump isolation valve, internal discharge silencer, and temperature switch.

### SYSTEM CONTROLS

The UL listed soft start electrical control panel features a high-definition color touch screen that can be set up externally without the use of toggle switches. The panel displays multiple conditions, including pump running status, elapsed hours, vacuum level, and audio/visual alarms.

Standard features include lag alarm, automatic pump alternation, adjustable minimum run timer, adjustable vacuum settings, adjustable screen brightness, alarm history registry, and data logging. The panel has standard dry contacts and Modbus interface with building management systems. Ethernet and BACnet are available as options. The panel's maintenance menu includes service items and maintenance warnings, and it is programmed for both English and Spanish languages.

### VACUUM RECEIVER

Constructed to ASME standards and rated for full vacuum. Equipped with valved bypass, high visibility vacuum gauge, source isolation valve, and a manual drain valve. Mounting pads and flex connectors supplied for field installation.

### KEY OPTIONS

Variable Speed Drive Electrical Panel  
O2 Assured Oil for gearbox  
Configurable for Lab or Industrial Applications  
Gas Purge System for Lab use

<b>Configuration</b>	Quadruplex Stack Mount
<b>System Capacity*</b>	195 SCFM @ 19" Hg. 60 Hz. 162.4 SCFM @ 19" Hg. 50 Hz.
<b>Horsepower (Each Pump)</b>	7.5 HP
<b>Horsepower (Total System)</b>	30 HP
<b>Available Voltage</b>	208/230/460 v. 3 phase 60 Hz. 380 v. 3 phase 50 Hz. Contact Factory for other voltages
<b>Full Load Amps 3 ph.</b>	208 volts: 99.8 230 volts: 90.8 380 volts: 54.9 460 volts: 45.5
<b>Tank Size</b>	240 gallon vertical
<b>Medical Filter Bank (option)</b>	BOM-MED FB-3

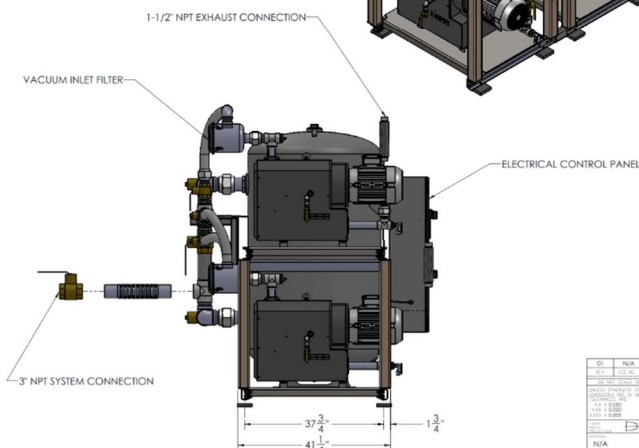
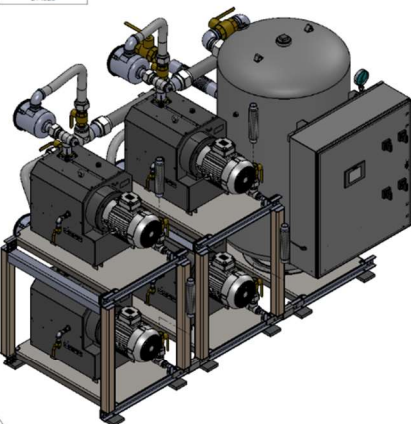
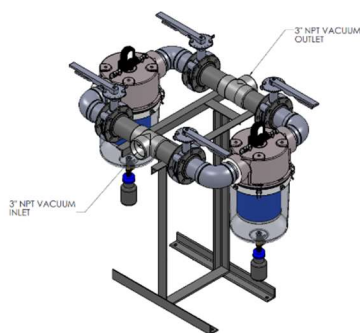


Click here for pump specifications  
and industry-leading parts support.

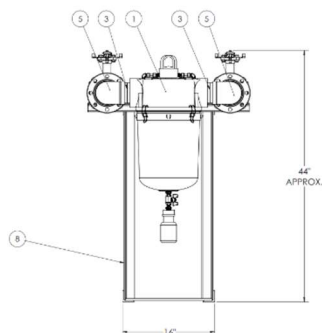
\*System capacity is stated with one pump in reserve per NFPA. Capacity based on operation at sea level. For higher altitude, contact factory for adjusted capacity.

SYSTEM LISTED ARE 460V. IF ANOTHER VOLTAGE IS REQUIRED, USE THE FOLLOWING PART NUMBERS.			
VOLTAGE	SYSTEM P/N	PUMP MODULE P/N	MOTOR OVERLOAD PROTECTION
208-60-3	SC750-208-54-V240	100-0132	214557
230-60-3	SC750-230-54-V240	100-0132	214557
380-50-3	SC750-380-54-V240	100-0132	214528

VOLTAGE	SYSTEM P/N	PUMP MODULE P/N	MOTOR OVERLOAD PROTECTION
208-60-3	SC750-208-54-V240	100-0132	214557
230-60-3	SC750-230-54-V240	100-0132	214557
380-50-3	SC750-380-54-V240	100-0132	214528

[illegible]

ITEM NO.	QUANTITY	PART NUMBER	DESCRIPTION	REF NO.
1	2	233913	MEDICAL VACUUM FILTER 0.2 MICRONS 3" FPI	
2	4	A-127-0234	3/4" X 1" NPT NUT	
3	4	A-127-0551	3" NPT CLOSE OFF NUT	
4	2	A-127-0911	3" Threaded Tee	
5	4	A-127-0911	3" NPT - ELBOW	
6	4	A-140318	3" NPT SCH 40 GALVANIZED PIPE (8' LONG)	
7	6	S-1404-2	FLANGE, 3"	
8	1	BASE-MTD F83	WELDED BASE, MEDICAL FILTER BANK 3" FPI	
9	4	N-13-3	INTERNAL VALVE 2" NPT	



Q	N/A	INITIAL RELEASE		01/14/20	PJ
MR	63104	DESCRIPTION OF INJURY		DATE	BY
1. NAME (LAST, FIRST, MIDDLE) 2. DATE OF BIRTH (MM/DD/YYYY) 3. SEX 4. RACE 5. SSN 6. AKA 7. DOB 8. AKA		9. OCCURRENCE DATE 10. OCCURRENCE TIME 11. OCCURRENCE LOCATION 12. OCCURRENCE TYPE 13. OCCURRENCE SEVERITY 14. OCCURRENCE CAUSE 15. OCCURRENCE EFFECT 16. OCCURRENCE ACTION 17. OCCURRENCE STATUS 18. OCCURRENCE COMMENTS		19. OCCURRENCE DATE 20. OCCURRENCE TIME 21. OCCURRENCE LOCATION 22. OCCURRENCE TYPE 23. OCCURRENCE SEVERITY 24. OCCURRENCE CAUSE 25. OCCURRENCE EFFECT 26. OCCURRENCE ACTION 27. OCCURRENCE STATUS 28. OCCURRENCE COMMENTS	
N/A		MEDICAL VACUUM FILTER BANK, 3" NPT CONNECTIONS			
N/A		BOM-MED FB-3			
SCHMIDT FB-3.03N		304212		304212	