

# SCH750-T2-H120 Claw Medical Vacuum System

System is NFPA compliant and has modular construction and interconnecting piping.

## PUMP MODULE

Oil-less rotary claw air cooled vacuum pump with 1750 RPM NEMA motor. Each pump module is equipped with an inlet filter, check valve, pump isolation valve, internal discharge silencer, and temperature switch.

## SYSTEM CONTROLS

The UL listed electrical control panel features a high-definition color touch screen that can be set up externally without the use of toggle switches. The panel displays multiple conditions, including pump running status, elapsed hours, vacuum level, and audio/visual alarms.

Standard features include lag alarm, automatic pump alternation, adjustable minimum run timer, adjustable vacuum settings, adjustable screen brightness, alarm history registry, and data logging. The panel has standard dry contacts and Modbus interface with building management systems. Ethernet and BACnet are available as options. The panel's maintenance menu includes service items and maintenance warnings, and it is programmed for both English and Spanish languages.

## VACUUM RECEIVER

Constructed to ASME standards and rated for full vacuum. Equipped with valved bypass, high visibility vacuum gauge, source isolation valve, and a manual drain valve. Mounting pads and flex connectors supplied for field installation.

## KEY OPTIONS

Variable Speed Drive Electrical Panel  
O2 Assured Oil for gearbox  
Configurable for Lab or Industrial Applications  
Gas Purge System for Lab use

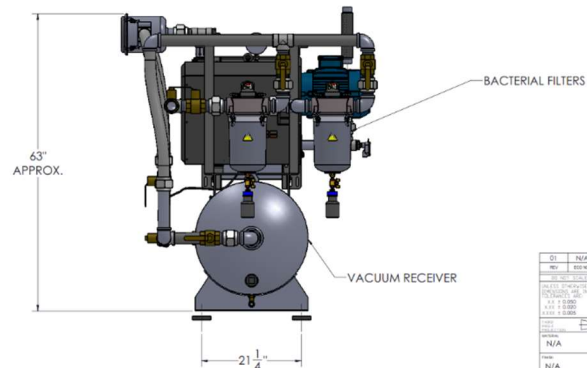
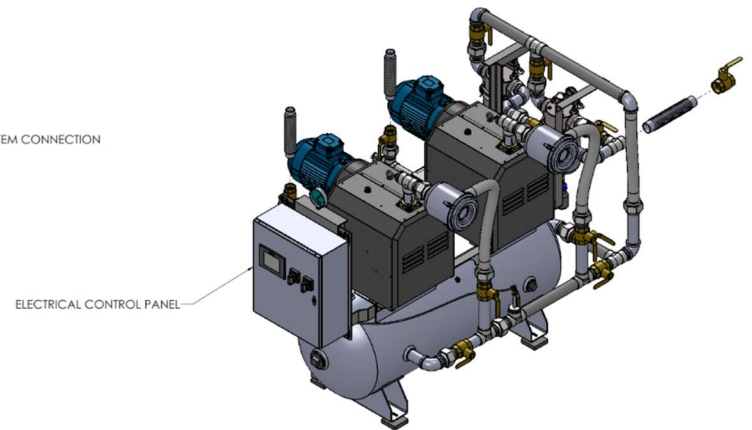
<b>Configuration</b>	Duplex Tank Mount
<b>System Capacity*</b>	37.5 SCFM @ 19" Hg. 60 Hz. 31.2 SCFM @ 19" Hg. 50 Hz.
<b>Horsepower (Each Pump)</b>	7.5 HP
<b>Horsepower (Total System)</b>	15 HP
<b>Available Voltage</b>	208/230/460V 3 PH 60 Hz. 380V 3 PH 50 Hz. Contact Factory for other voltages
<b>Full Load Amps 3 ph.</b>	208 Volts: 49.6 230 Volts: 45.1 380 Volts: 27.4 460 Volts: 22.6
<b>Tank Size</b>	120 gallon horizontal
<b>Medical Filter Bank (standard))</b>	BOM-MED-MVF20



Click here for pump specifications and industry-leading parts support.

\*System capacity is stated with one pump in reserve per NFPA. Capacity based on operation at sea level. For higher altitude, contact factory for adjusted capacity.

SYSTEM LISTED ARE .460V. IF ANOTHER VOLTAGE IS REQUIRED, USE THE FOLLOWING PART NUMBERS.			
VOLTAGE	SYSTEM P/N	PUMP MODULE P/N	TRIP MODULE P/N
208-60-3	5CH750-208-T2-H120	100-0139	214546
230-60-3	5CH750-230-T2-H120	100-0139	214546
380-50-3	5CH750-380-T2-H120	100-0139	214546



Q1	REV	INITIAL RELEASE	11/17/2020	P.1
Q2	ENCL	DESCRIPTION OF CHANGE	DATE	R.1
Q3	REV	DATE	DATE	
Q4	REV	DATE	DATE	
Q5	REV	DATE	DATE	
Q6	REV	DATE	DATE	
Q7	REV	DATE	DATE	
Q8	REV	DATE	DATE	
Q9	REV	DATE	DATE	
Q10	REV	DATE	DATE	
Q11	REV	DATE	DATE	
Q12	REV	DATE	DATE	
Q13	REV	DATE	DATE	
Q14	REV	DATE	DATE	
Q15	REV	DATE	DATE	
Q16	REV	DATE	DATE	
Q17	REV	DATE	DATE	
Q18	REV	DATE	DATE	
Q19	REV	DATE	DATE	
Q20	REV	DATE	DATE	
Q21	REV	DATE	DATE	
Q22	REV	DATE	DATE	
Q23	REV	DATE	DATE	
Q24	REV	DATE	DATE	
Q25	REV	DATE	DATE	
Q26	REV	DATE	DATE	
Q27	REV	DATE	DATE	
Q28	REV	DATE	DATE	
Q29	REV	DATE	DATE	
Q30	REV	DATE	DATE	
Q31	REV	DATE	DATE	
Q32	REV	DATE	DATE	
Q33	REV	DATE	DATE	
Q34	REV	DATE	DATE	
Q35	REV	DATE	DATE	
Q36	REV	DATE	DATE	
Q37	REV	DATE	DATE	
Q38	REV	DATE	DATE	
Q39	REV	DATE	DATE	
Q40	REV	DATE	DATE	
Q41	REV	DATE	DATE	
Q42	REV	DATE	DATE	
Q43	REV	DATE	DATE	
Q44	REV	DATE	DATE	
Q45	REV	DATE	DATE	
Q46	REV	DATE	DATE	
Q47	REV	DATE	DATE	
Q48	REV	DATE	DATE	
Q49	REV	DATE	DATE	
Q50	REV	DATE	DATE	
Q51	REV	DATE	DATE	
Q52	REV	DATE	DATE	
Q53	REV	DATE	DATE	
Q54	REV	DATE	DATE	
Q55	REV	DATE	DATE	
Q56	REV	DATE	DATE	
Q57	REV	DATE	DATE	
Q58	REV	DATE	DATE	
Q59	REV	DATE	DATE	
Q60	REV	DATE	DATE	
Q61	REV	DATE	DATE	
Q62	REV	DATE	DATE	
Q63	REV	DATE	DATE	
Q64	REV	DATE	DATE	
Q65	REV	DATE	DATE	
Q66	REV	DATE	DATE	
Q67	REV	DATE	DATE	
Q68	REV	DATE	DATE	
Q69	REV	DATE	DATE	
Q70	REV	DATE	DATE	
Q71	REV	DATE	DATE	
Q72	REV	DATE	DATE	
Q73	REV	DATE	DATE	
Q74	REV	DATE	DATE	
Q75	REV	DATE	DATE	
Q76	REV	DATE	DATE	
Q77	REV	DATE	DATE	
Q78	REV	DATE	DATE	
Q79	REV	DATE	DATE	
Q80	REV	DATE	DATE	
Q81	REV	DATE	DATE	
Q82	REV	DATE	DATE	
Q83	REV	DATE	DATE	
Q84	REV	DATE	DATE	
Q85	REV	DATE	DATE	
Q86	REV	DATE	DATE	
Q87	REV	DATE	DATE	
Q88	REV	DATE	DATE	
Q89	REV	DATE	DATE	
Q90	REV	DATE	DATE	
Q91	REV	DATE	DATE	
Q92	REV	DATE	DATE	
Q93	REV	DATE	DATE	
Q94	REV	DATE	DATE	
Q95	REV	DATE	DATE	
Q96	REV	DATE	DATE	
Q97	REV	DATE	DATE	
Q98	REV	DATE	DATE	
Q99	REV	DATE	DATE	
Q100	REV	DATE	DATE	

